



City of Florence
A City in Motion

City of Florence Council Regular Session

Florence Events Center
715 Quince Street
Florence, OR 97439
541-997-3437
www.ci.florence.or.us

- Meeting materials including information on each agenda item are published at least 24 hours prior to the meeting, and can be found of the City of Florence website at www.ci.florence.or.us/council.
- Items distributed during the meeting, meeting minutes, and a link to the meeting video are posted to the City's website at www.ci.florence.or.us/council as soon as practicable after the meeting.
- To be notified of City Council meetings via email, please visit the City's website at <http://www.ci.florence.or.us/newsletter/subscriptions>.

April 16, 2018

AGENDA

5:30 p.m.

Councilors:

Joe Henry, Mayor

Joshua Greene, Council President Ron Preisler, Council Vice-President
Susy Lacer, Councilor Woody Woodbury, Councilor

With 48 hour prior notice, an interpreter and/or TDY: 541-997-3437, can be provided for the hearing impaired.
Meeting is wheelchair accessible.

Proceedings will be recorded for rebroadcast on Cable Channel 191 and the City of Florence Vimeo Site.

CALL TO ORDER – ROLL CALL – PLEDGE OF ALLEGIANCE

5:30 p.m.

ANNOUNCEMENTS & PRESENTATIONS

- Lane Council of Governments Overview ~ *Brenda Wilson, LCOG Executive Director*
- Government Finance Officers Association (GFOA) Budget Award

1. PUBLIC COMMENTS – *Items Not on the Agenda*

This is an opportunity for members of the audience to bring to the Council's attention any item not otherwise listed on the Agenda. Persons wishing to address the Council must complete a Speaker's Card available online at <http://www.ci.florence.or.us/council/request-address-city-council-speakers-card>, or at the meeting. Comments will be limited to three (3) minutes per person, with a maximum time of 15 minutes for all items. Speakers may not yield their time to others.

CONSENT AGENDA

2. SANDPINES GOLF LINKS & THE GRILL AND LOUNGE LIQUOR LICENSE

Consider recommendation of approval to the Oregon Liquor Control Commission (OLCC) for the change of ownership liquor license for Sandpines Golf Links & The Grill and Lounge change located at 1201 35th Street.

Kelli Weese
City Recorder

3. GROCERY OUTLET LIQUOR LICENSE

Consider recommendation of approval to the Oregon Liquor Control Commission (OLCC) for the change of ownership liquor license for Grocery Outlet located at 2066 Hwy 101.

Kelli Weese
City Recorder

4. JERRY'S PLACE HOME OF WAT'CHA BREWING LIQUOR LICENSE

Consider recommendation of approval to the Oregon Liquor Control Commission (OLCC) for the new outlet brewery liquor license for Jerry's Place Home of Wat'cha Brewing located at 88274 Rhododendron Drive.

Kelli Weese
City Recorder

PUBLIC HEARING & ACTION ITEMS

The public will have an opportunity to offer comments on public hearing items after staff has given their report and if there is an applicant, after they have had an opportunity to speak. Persons wishing to address the Council must complete a Speaker's Card available online at <http://www.ci.florence.or.us/council/request-address-city-council-speakers-card>, or at the meeting. Comments will be limited to five (5) minutes per person. Speakers may not yield their time to others.

5. HARBOR VISTA CAMPGROUND ANNEXATION & ZONE CHANGE

A. PUBLIC HEARING ON ANNEXATION AND ZONE ASSIGNMENT

Hear and consider written and oral testimony regarding the annexation and zone assignment of Harbor Vista Campground located at 87658 Harbor Vista Road as applied for by Lane County.

Wendy
FarleyCampbell
Planning Director

5c. B. APPROVAL OF ANNEXATION REQUEST

Consider approval of **Ordinance No. 2, Series 2018**, an ordinance approving the annexation of Harbor Vista Campground (87658 Harbor Vista Road), Harbor Vista Road, South Harbor Vista Drive, abutting North Jetty Drive, an North Jetty Road.

Wendy
FarleyCampbell
Planning Director

C. APPROVAL OF ZONE ASSIGNMENT

Consider approval of **Ordinance No. 3, Series 2018**, an ordinance establishing Open Space zoning district to Harbor Vista Campground (87658 Harbor Vista Road), Harbor Vista Drive, South Harbor Vista Drive and Abutting North Jetty Drive, and Single Family Residential zoning to North Jetty Road, as part of the proposed annexation.

ACTION ITEMS

The public will have an opportunity to offer comments on action items after staff has given their report. Persons wishing to address the Council must complete a Speaker's Card available online at <http://www.ci.florence.or.us/council/request-address-city-council-speakers-card>, or at the meeting. Comments will be limited to three (3) minutes per person. Speakers may not yield their time to others.

6. ALL ROADS TRANSPORTATION SAFETY (ARTS) PROGRAM GRANT

Consider approval of **Resolution No. 7, Series 2018**, a resolution authorizing staff to apply for an all roads transportation safety (ARTS) program grant with the Oregon Department of Transportation for safety enhancements to Florence's transportation system.

Mike Miller
Public Works
Director

7. FLORENCE AIRPORT SEAL COAT / LIGHTING IMPROVEMENT ENGINEERING

Consider accepting the engineering services proposal from **Civil-Century West Engineering** in the amount of \$402,020 for the Florence airport seal coat and lighting project and authorize the City Manager to proceed with a professional services contract.

Mike Miller
Public Works
Director

8. USDA RURAL BUSINESS DEVELOPMENT GRANT FOR RAIN

Consider authorizing staff to apply for the US Department of Agriculture (USDA) Rural Business Development Grant in conjunction with the Regional Accelerator & Innovation Network (RAIN) for continued support of coastal entrepreneurship programs.

Kelli Weese
City Recorder /
Eco. Devo.
Coordinator

REPORT & DISCUSSION ITEMS

9. ALICE TRAINING

Report on the City's efforts toward Alert, Lockdown, Inform, Counter, Evacuate (ALICE) training.

John Pitcher
Commander

10. BOARD AND COMMITTEE REPORTS

Report on the workings of the City's Boards and Committees for the Month of March 2018.

Staff
Various

11. CITY MANAGER REPORT & DISCUSSION ITEMS

Erin Reynolds
City Manager

12. CITY COUNCIL REPORTS & DISCUSSION ITEMS

Joe Henry
Mayor

Florence Events Center Lighting & Audio Upgrades

After the City Council Meeting Adjournment, the City Council will tour the Florence Events Center Theater to receive a demonstration of the recent lighting and audio upgrades.

No action will be taken by the City of Florence City Council during this informational gathering.

COUNCIL CALENDAR

All meetings are held at the Florence Events Center (715 Quince Street, Florence Oregon) unless otherwise indicated

Date	Time	Description
April 18, 2018	10:00 a.m.	City Council Work Session
May 7, 2018	5:30 p.m.	City Council Meeting
May 9, 2018	10:00 a.m.	City Council Work Session <i>Tentative</i>
May 21, 2018	5:30 p.m.	City Council Meeting
May 23, 2018	10:00 a.m.	City Council Work Session
May 28, 2018	- - -	Memorial Day Holiday <i>City Offices Closed</i>
June 4, 2018	5:30 p.m.	City Council Meeting
June 6, 2018	10:00 a.m.	City Council Work Session <i>Tentative</i>
June 18, 2018	5:30 p.m.	City Council Meeting
June 20, 2018	10:00 a.m.	City Council Work Session <i>Tentative</i>
July 2, 2018	- - -	City Council Meeting <i>Canceled</i>
July 4, 2018	- - -	Independence Day Holiday <i>City Offices Closed</i>
		City Council Work Session <i>Canceled</i>
July 16, 2018	5:30 p.m.	City Council Meeting
July 18, 2018	10:00 a.m.	City Council Work Session <i>Tentative</i>

Presented at
4.16.18 City
Council Meeting -
Presentations

Lane Council of Governments



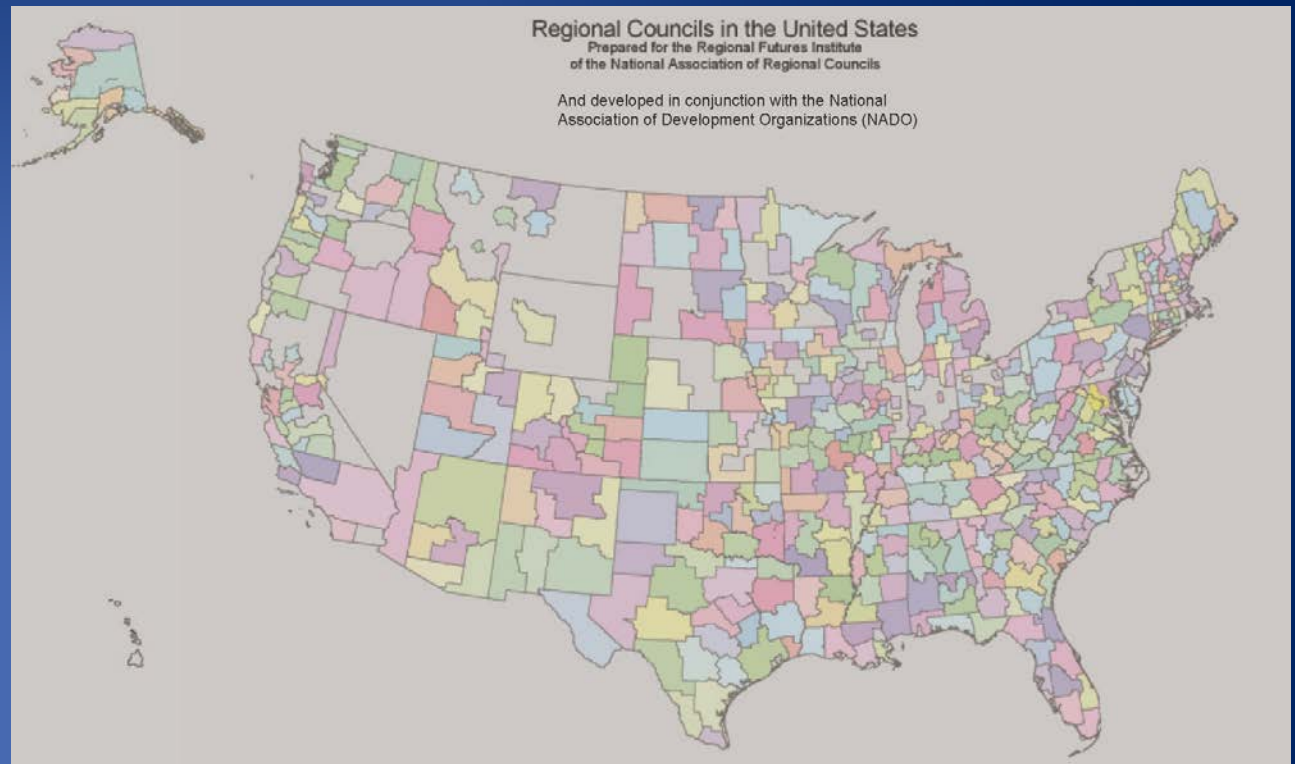
WWW.LCOG.ORG

What is a COG?

- Voluntary association of cities, counties, and special purpose districts within a region
- COGs serve regional planning, coordination, program development, and service delivery functions across the nation
- COGs have a common purpose of solving area-wide problems

Regional Councils in the United States

Over 700
Nationwide





LCOG Means Cooperation

- Advantages of cooperative and joint ventures between local governments were recognized in the mid-1940s
- Central Lane County Planning Commission formed in 1945
- LCOG: currently 34 member governments and agencies





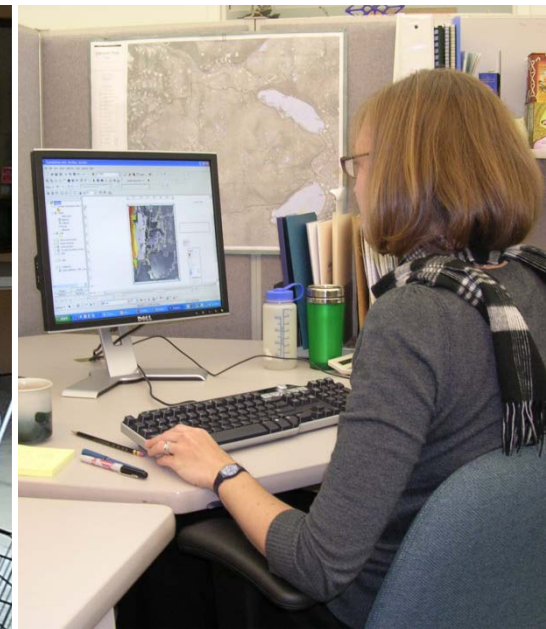
Member Agencies

- Lane County
- City of Coburg
- City of Cottage Grove
- City of Creswell
- City of Dunes City
- City of Eugene
- City of Florence
- City of Junction City
- City of Lowell
- City of Oakridge
- City of Springfield
- City of Veneta
- City of Westfir
- Emerald People's Utility District
- Eugene Water & Electric Board
- Fern Ridge Library District
- Heceta Water People's Utility District
- Junction City Rural Fire Protection District
- Lane Community College
- Lane Education Service District
- Lane Library District
- Lane Transit District
- Port of Siuslaw
- River Road Park and Recreation
- School District 19 – Springfield
- School District 4J – Eugene
- School District 40 – Creswell
- School District 52 – Bethel
- School District 68 – McKenzie
- School District 45J – South Lane
- Siuslaw Library District
- Siuslaw Valley Fire & Rescue
- Western Lane Ambulance District
- Willamalane Park & Recreation District



LCOG is organized into three operating divisions:

- Administrative Services
- Government Services
- Senior & Disability Services



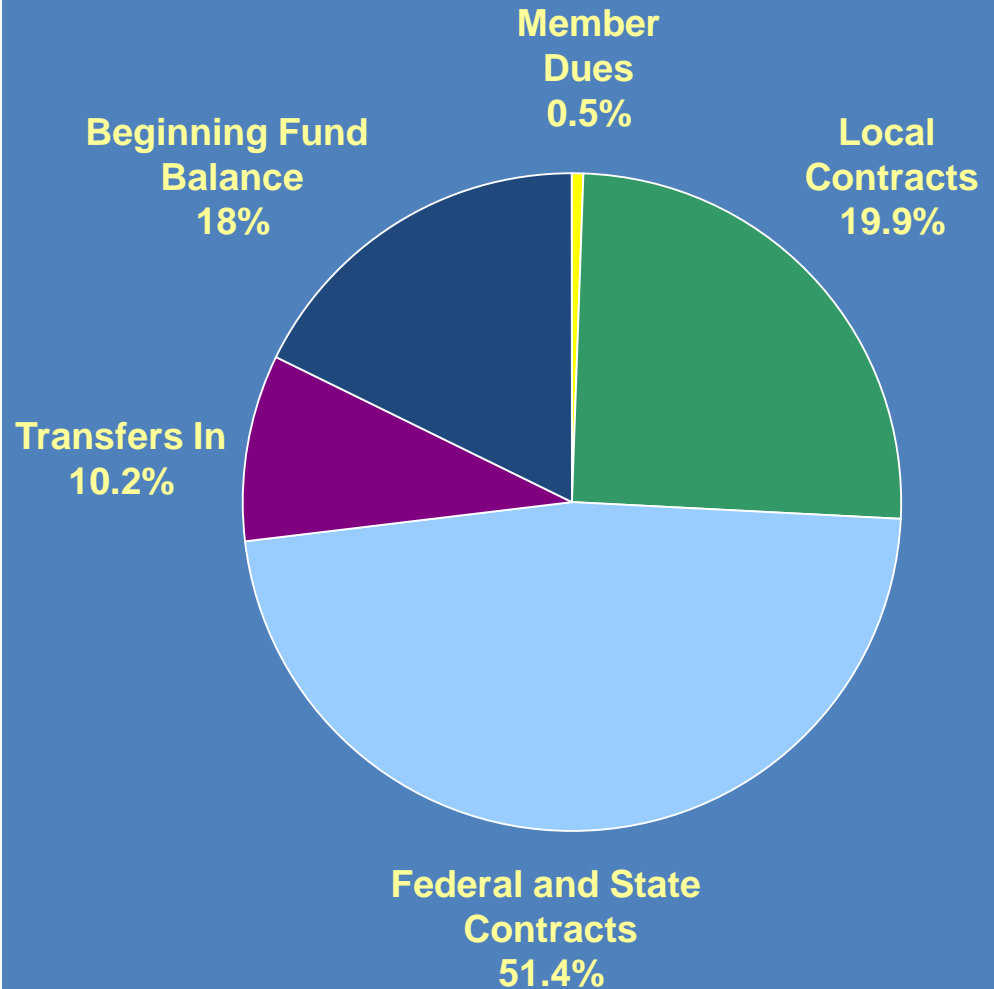


Financing

A Mix of Sources:

- Annual member dues
- Project specific contracts
- Program-oriented contracts

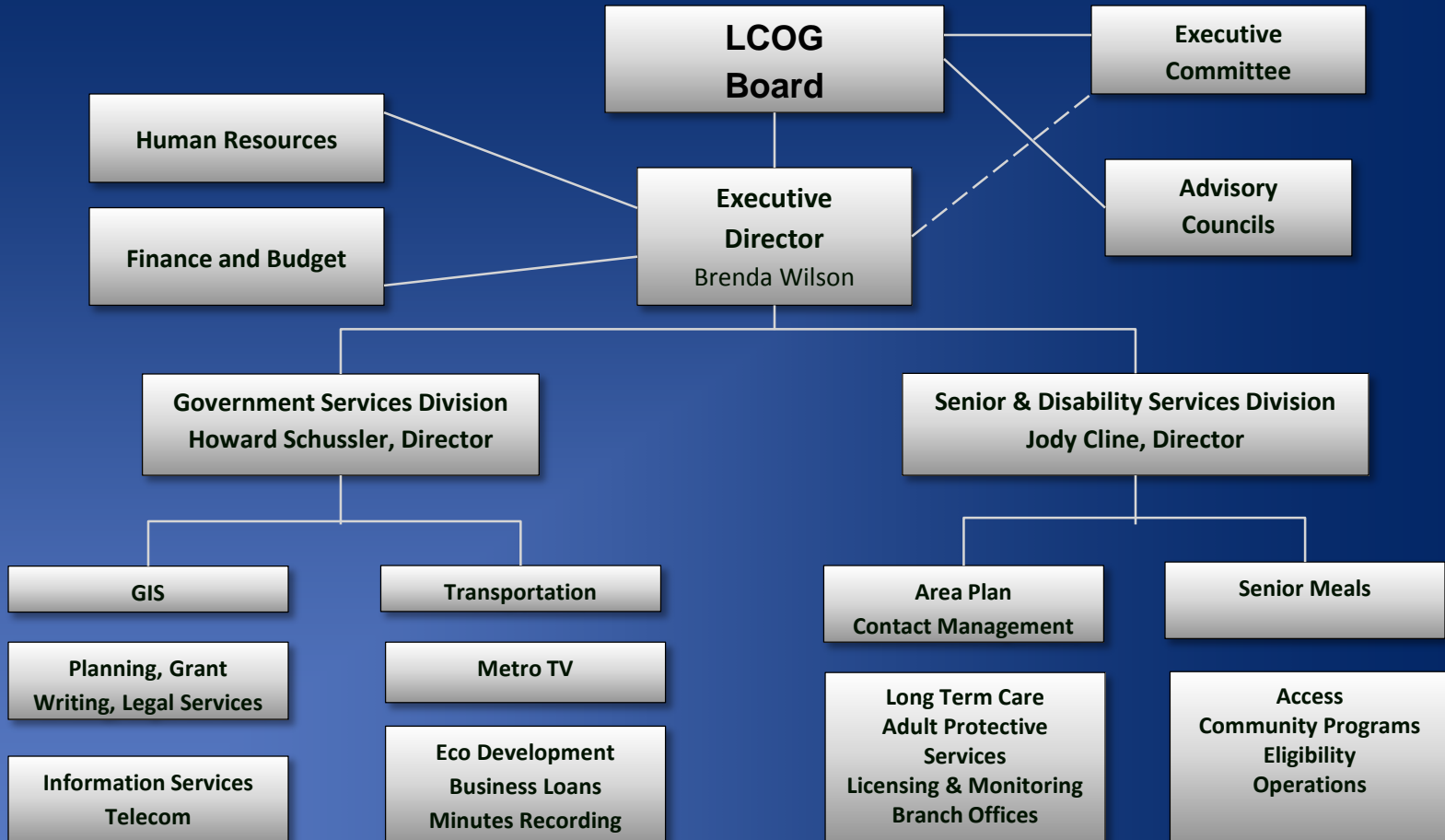
LCOG Funding Breakdown (2017 – 2018 Budget) \$41.3 million



LCOG Services



LCOG's Organization



Government Services

Our services include:

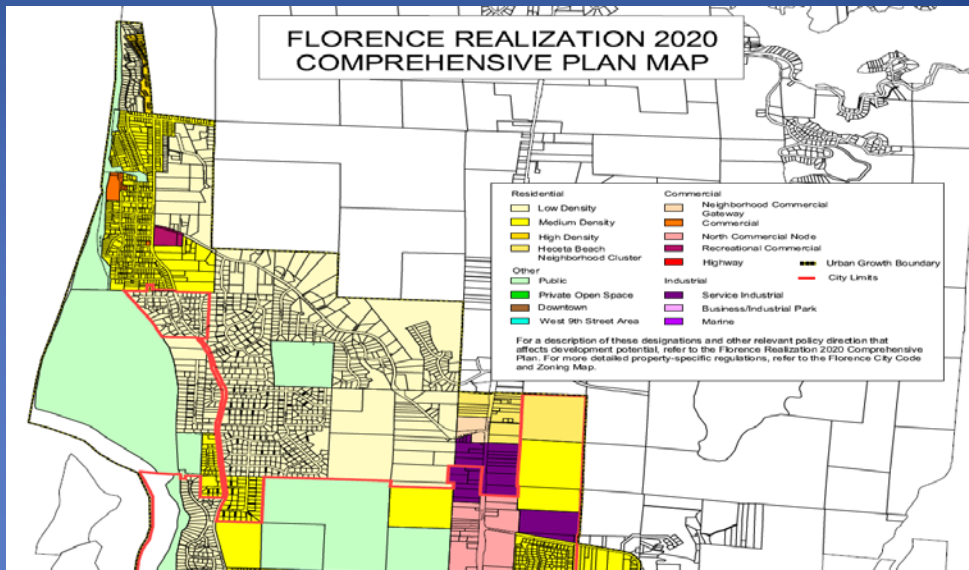
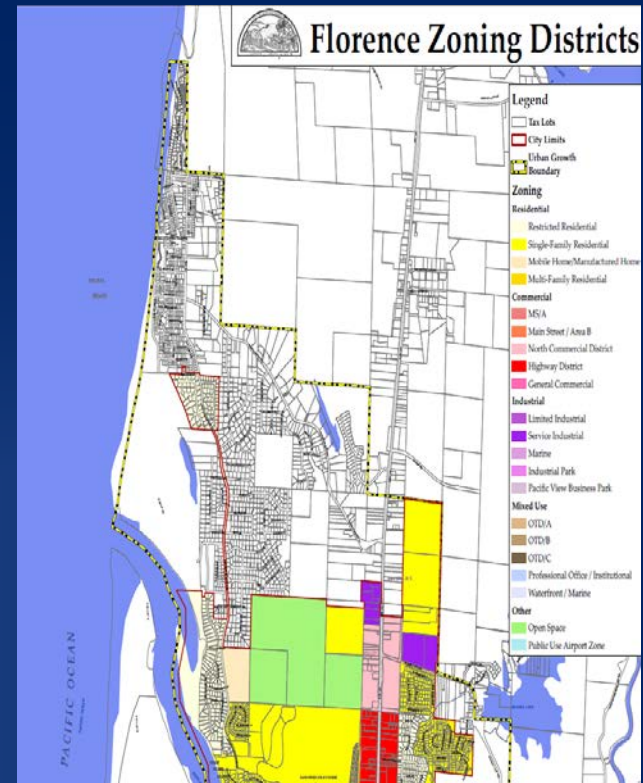
- Urban and Regional Planning
- Transportation Planning
- Grant Writing/Resource Development
- Community Safety
- Legal Services
- Telecommunications and Broadband
- Technology and Information Services
- GIS, Data Services, and RLID
- Metro TV
- Economic Development/Business Loans
- Minutes Recording Services



Planning

Parks and Open Space Planning

- Park master planning and site plans
- Natural area management plans
- Recreation and trail planning
- Regional park and open space visions
- Grant writing



Planning

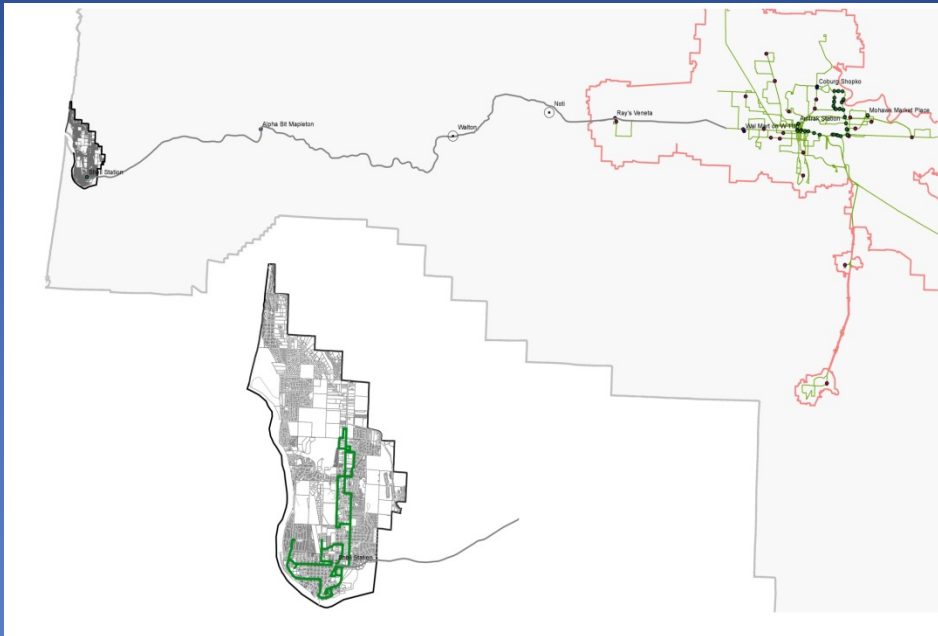
Water Resources Planning

- Ground and surface water assessment and planning
- Compliance with State and Federal laws
- Stormwater and wastewater system studies and planning
- Infrastructure finance studies
- Technical assistance for water quality protection



Transportation

- Traffic, safety, and transportation data and analysis
- Environmental assessments for transportation infrastructure
- Air quality and GHG planning
- Interchange Area Management Plan development
- Transportation system planning support
- Multi-modal transportation planning



Grant Writing/Resource Development

- Grant research and grant writing
- Project development and coordination
- Budget development and coordination
- Grant Evaluation
- Organizational capacity building
- Strategic and business plans



Community Safety

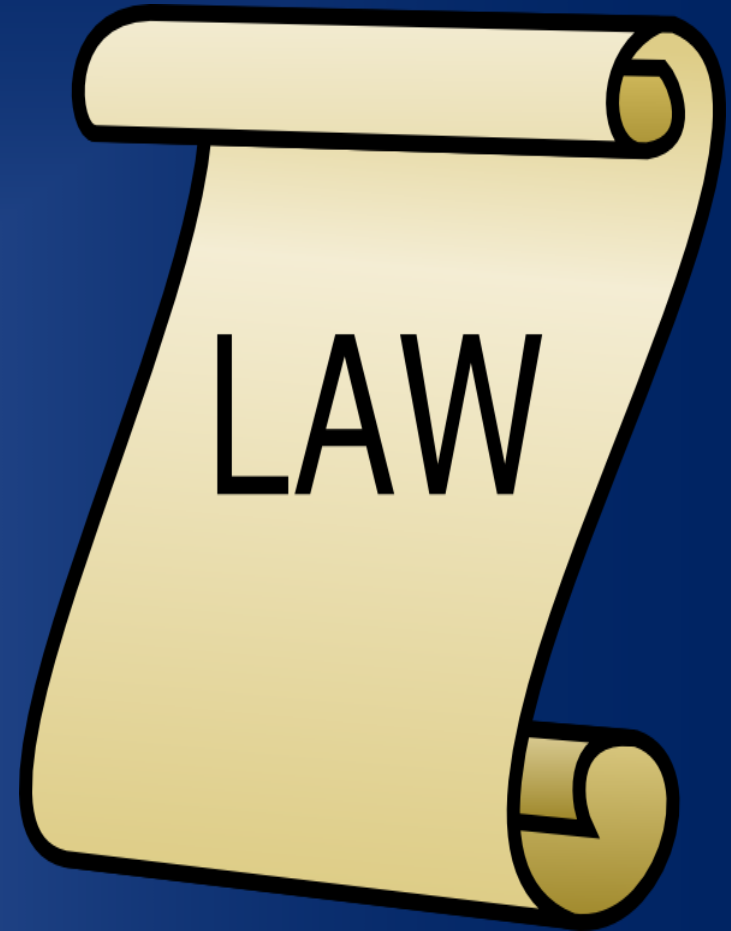
- Public Safety Coordinating Council (PSCC)
- Community Corrections Risk Assessment Project
- Public Safety Grant Development and Coordination
- Safe Schools and Healthy Students Grant



Legal Services

Land Use Law and Hearings Official

- Civil infraction hearings
- Code revisions and interpretations
- Hearings officials in areas of land use and administrative law
- Trainings and workshops on land use laws, Oregon's laws on ethics, open meetings, and public records
- Assistance to local government legal counsels on applicable case law and land use appellate procedures
- Legal counsel to small cities
- Interpreting and applying FCC rules


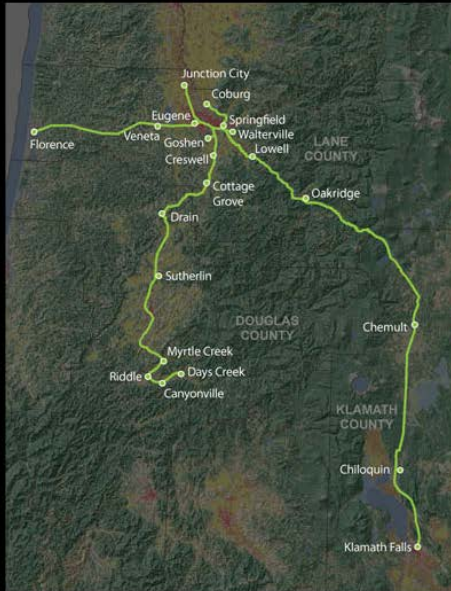


Telecommunications and Broadband

- LCOG provides telephone service to local governments
- LCOG supports the *Regional Fiber Consortium Public Area Network*
- Broadband Technology Opportunities Program (BTOP)

CONNECTING OREGON

Empowering Communities with Broadband



Online arson detection training will be available to firefighters in Junction City.

Welcome to Connecting Oregon


Welcome to the new website dedicated to empowering communities with broadband.


Earlier this year, a federal stimulus grant was awarded to the three-county region of Lane, Douglas and Klamath to provide improved internet service. Use **Connecting Oregon** to stay informed!

▼ Anchor Institutions

- Overview
- Education
- Medical and Healthcare Providers
- Public Safety
- Libraries
- Other Government Facilities
- BTOP Grant Info
- BTOP wiki
- Interconnection Facility
- Regional Fiber Consortium
- Service Providers

The total area served by a **broadband connection** will be approximately the size of Vermont.

Click  to subscribe to our RSS feed for updates.
© 2010 - Lane Council of Governments



WWW.CONNECTINGOREGON.COM

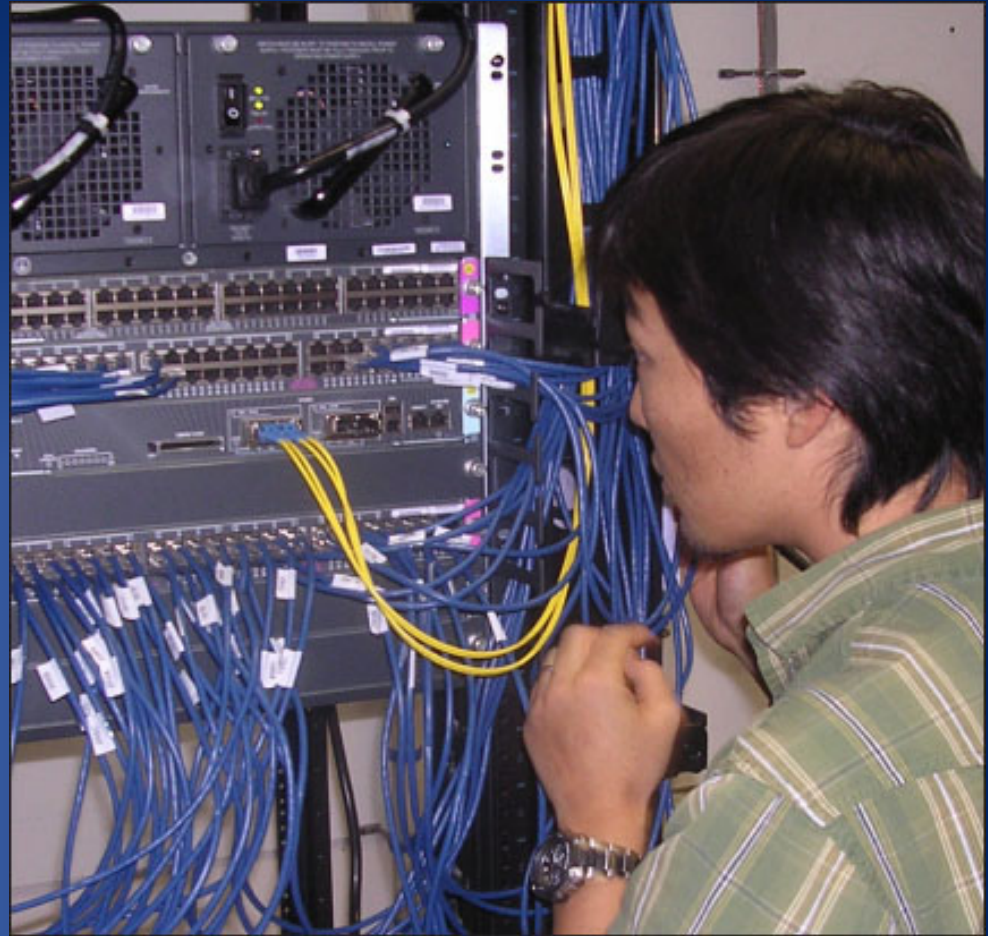
Regional Technology Services

- Cost effective technology services to member agencies
- Regional Telecommunications management and Operations



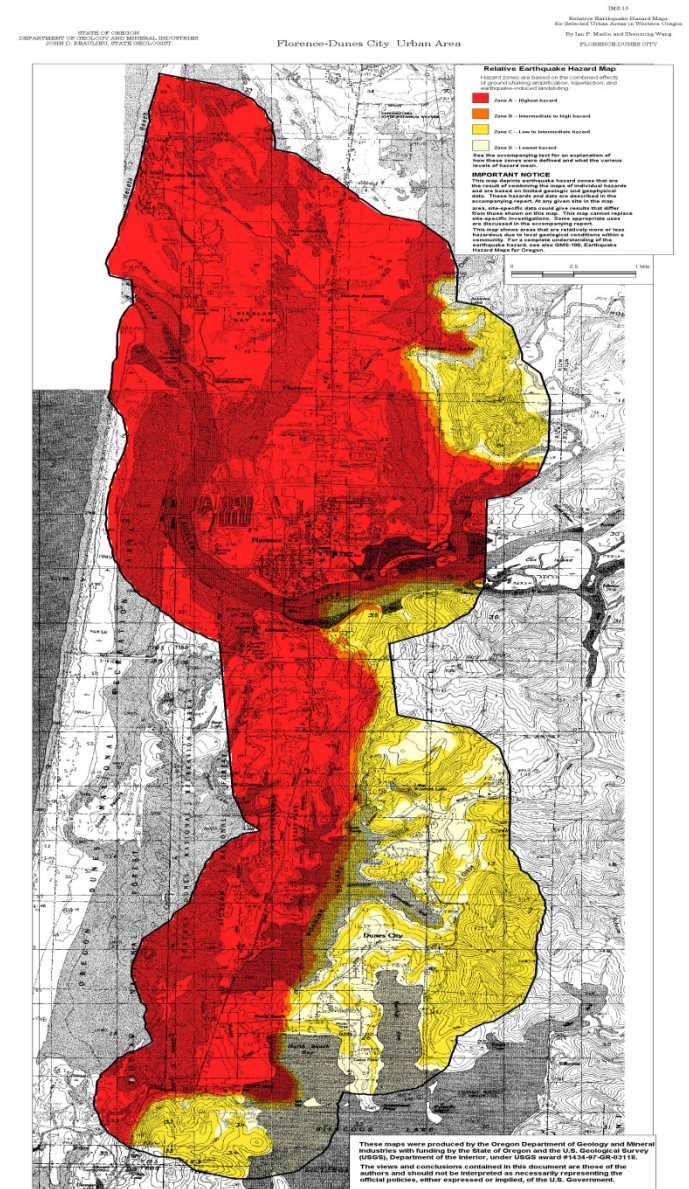
Information Services

- Staff support
- Applications and data bases
- Management of technical projects
- Computer software upgrades
- Network and workstation installations
- IT Long Range Planning



Applied GIS and Data Services

- Spatial analysis and mapping
- Research and information
- Data and application development





Regional Land Information Database

- Data warehouse for regional land information
- RLID offers powerful tools:
 - Property and record searches
 - Custom mapping and analysis
 - Targeted mailing lists

The screenshot shows the homepage of the Regional Land Information Database of Lane County. The header includes the RLID logo and the title "Regional Land Information Database of Lane County". A navigation menu on the left lists various search and application options. The main content area features a large aerial photograph of a residential neighborhood, a "Welcome to RLID" message, and several informational sections: "System Info" with a "CHECK IT OUT!" notice, "RLID News" with updates on residential comp sales and commercial sales data, and a "Did you know?" section about LCOG's status. A sidebar on the right contains icons for "FEATURES", "QUICK LOOK (Free Info)", "STREET NAME SEARCH", "MAPS, DATA & CUSTOM SERVICES", and "RLID BROCHURE".

WWW.RLID.COM

Metro Television

- Video production
- Technical Consultation
- MetroTV on Comcast Cable 21
- Elected official meetings
- Public outreach
- Community programming
- Town hall meetings

Cable 21
METROtv

*Award Winning Service for
Eugene and Lane County, Oregon*

BEHIND THE SCENES LOCAL MEETING COVERAGE SCHEDULE STAFF/CONTACT US

Now Showing

Lane County Board of County Commissioners 8/17
Start time: Tue, 08/23/2011 - 9:00am

News

The current "**Working for You**" program for **Lane County** features the Lane Events Center. It will be airing during the month of June.

City of Eugene "Working City" segments for this month are: the "Poplar Farm" operated by the City of Eugene Biosolids Management Team and an update on the "Envision Eugene" process. Next month's topics will be the new "e-parking program" and how we pay for ambulance service.



Discover Your World

15:12

Click here for more **METROtv** video productions on VIMEO.

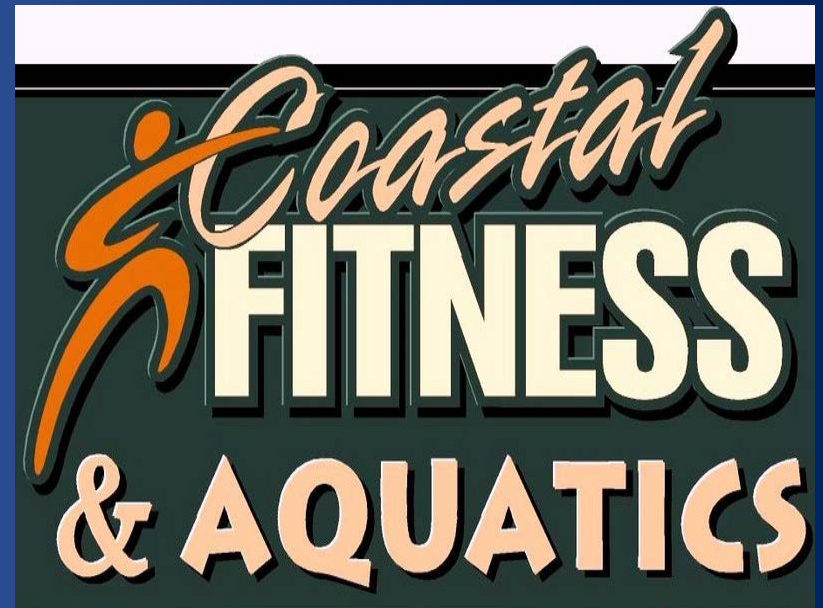
METROTV.ORG

Economic Development and Business Loan Program

- Twelve types of loans
- Federal, state, and local government loans
- Financing for new or existing businesses
- Comprehensive Economic Development Strategy

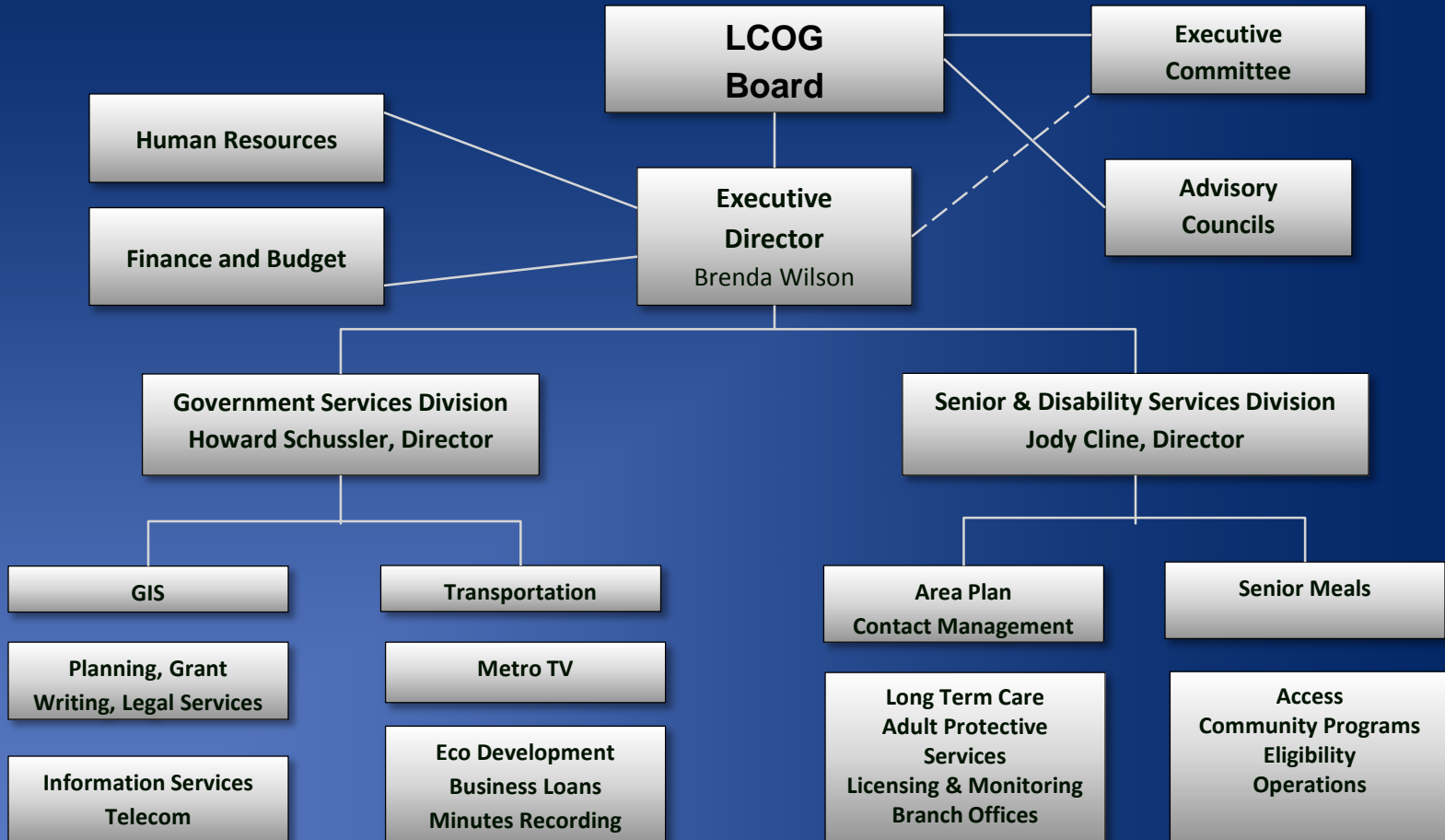


Burns Riverside Chapel



Coastal Fitness & Aquatics

LCOG's Organization



Senior and Disability Services Division

To advocate for seniors and adults with disabilities and provide to them quality services and information that promote dignity, independence, and choice

Who S&DS serves:

- Primarily those ages 18-65 with physical disabilities and those age 60 and older, but in some instances S&DS may also serve newborns to 18



Senior and Disability Services Florence Office

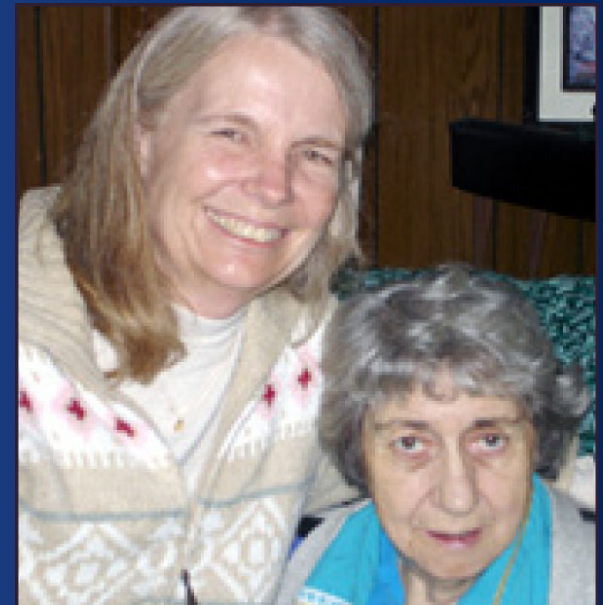
3180 Highway 101 – Central Coast Resource Center



Services

A creative combination of services and resources:

- Eligibility Screening and Referral
- Case Management
- Licensing and Monitoring of Adult Foster Homes
- Home Care Worker Program
- Adult Protective Services
- Family Caregiver Support
- Options Counseling
- Oregon Project Independence
- PEARLS Program
- Transportation Coordination
- Oregon Money Management Program



Aging & Disability Resource Connection (ADRC)

Personal assistance to help people navigate through options for services:

- Assist with finding resources
- Online database of resources
- Options counseling by trained professionals
- Hospital to home care transitions intervention



1-800-441-4038

WWW.ADRCOFOREGON.COM

Senior Connections

Matching older adults with resources and services they need:

- Medical transportation
- Caregiver training
- Respite care for unpaid family caregivers





- Meals on Wheels helps homebound older people remain independent
- Café 60 Dining Rooms serve meals in a friendly community setting



Meals on Wheels

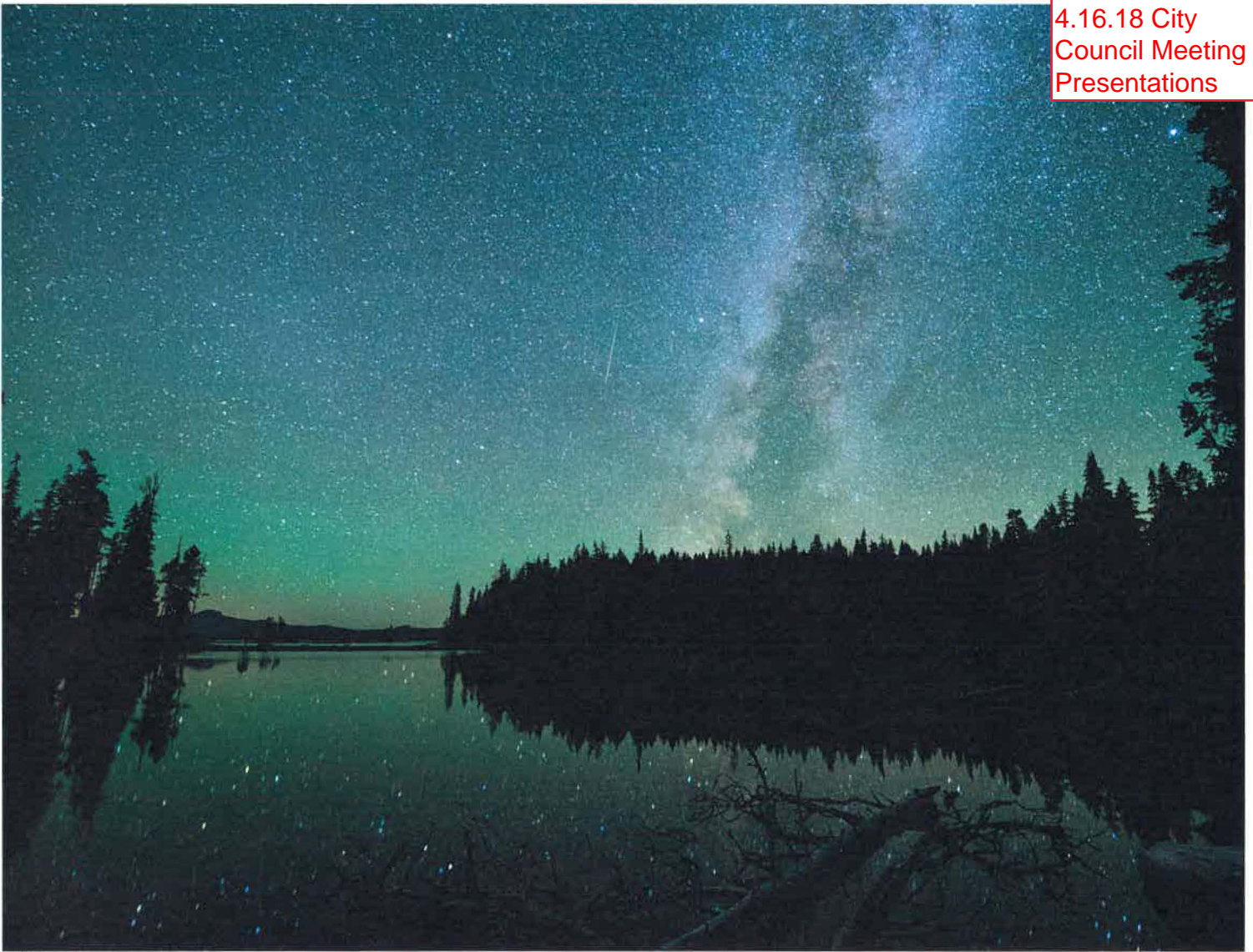


Café 60

Working Together for our Community



WWW.LCOG.ORG



Waldo Lake, photo by Keith Testerman, LCOG

LANE COUNCIL OF GOVERNMENTS 2017 ANNUAL REPORT

LCOG'S MEMBER GOVERNMENTS AND AGENCIES

City of Coburg
City of Cottage Grove
City of Creswell
City of Dunes City
City of Eugene
City of Florence
City of Junction City
City of Lowell
City of Oakridge
City of Springfield
City of Veneta
City of Westfir

Emerald People's Utility District
Eugene Water & Electric Board
Fern Ridge Library District
Heceta Water People's Utility District
Junction City Rural Fire Protection District
Lane Community College
Lane County
Lane Education Service District
Lane Library District
Lane Transit District
Port of Siuslaw
River Road Park and Recreation

School District 19 – Springfield
School District 4J – Eugene
School District 40 – Creswell
School District 52 – Bethel
School District 68 – McKenzie
School District 45J – South Lane
Siuslaw Library District
Siuslaw Valley Fire & Rescue
Western Lane Ambulance District
Willamalane Park & Recreation District





Message from LCOG's 2017 Board Chair – EWEB Commissioner John Simpson

You know the old adage “Two steps forward and one step back”? Well, despite some fantastic advances here at home that give me much pride, I’m afraid our federal leadership has taken two steps back and zero steps forward. Like I said last year, people are reaching out, hoping to lock onto something solid; something that is familiar and feels safe, but the handrails are a bit shaky these days. Locally, we rally and try to fill the gaps, but it’s tough when the nation isn’t in alignment.

Here at home we continue to fight against targeted violence and bigotry towards individuals who are perceived as different, disenfranchised, or in need. Much of the initial shock and fear I felt a year ago has succumb to a sense of numbness as I hear one mind-boggling news story after another about the leadership (or lack thereof) of the United States of America.

Last year was a challenging year, but LCOG accomplished some exciting things: reduced indirect rates for the 5th year in a row, fully implemented a new fiscal system, restructured the ADRC to provide better service to S&DS consumers, and remodeled the Eugene S&DS lobby to allow for better privacy and safety for consumers and staff. Last year was also a year

of partnerships where LCOG: assisted in writing over \$7 million in successful grants; partnered to launch a safety coalition to work to reduce fatal and severe crashes in Lane County; packaged business loans to help small businesses create over 150 new jobs; participated on several state-wide committees; prepared for the 2020 Census; and continued to assist regional partners on several exciting projects including the Downtown (Eugene) Fiber Pilot Project and mapping the Public Agency Network (PAN) fiber network.

In 2018, LCOG will again face unpredictable funding from state and federal sources, increased health insurance rates, and a growing need for services. The 2013 government shutdown had reverberating effects on LCOG, and so too will the 2018 shutdown. Now, more than ever, partnerships and dedication are crucial and I’m sure LCOG will continue to serve the Lane County region with a high level of service.

Thank you once again for placing your trust in me to serve as Lane Council of Government's chair for 2016 and 2017. It has been a distinct honor to serve in a leadership role for such a well-run and well represented organization.



Message from LCOG's Executive Director – Brenda Wilson

In this Annual Report you will find a review of the past year and incredible work going on in our region. I hope that as you read this report, you will learn not only about LCOG, but also about the passion and dedication of the staff and our regional partners with whom we collaborate. And most importantly, I'd like to convey my appreciation to all of you who participated and contributed this year, as staff, members, partners,

board and committee members, vendors, and volunteers. You inspire me with your dedication, and I truly understand that our successes would not have been possible without your efforts. I look forward to serving the region together and my hope for 2018 is that LCOG continues to find ways to help this great region soar. Believe with me, that the best is yet to come!



COUNCIL OF GOVERNMENTS & FINANCES

What is a COG?

A Council of Governments is a voluntary association of cities, counties and special purpose districts within a region. COGs serve as regional planning, coordination, program development and service delivery organizations in local communities across the nation. Local issues often cross jurisdictional boundaries and can be most effectively addressed by communities working together within a regional forum. Councils of Governments differ in size and range of activities from one region to another, but their common purpose and function is solving area-wide problems. COGs are designed to help the public sector operate more efficiently and effectively through the pooling of resources so that communities accomplish more than they could individually.

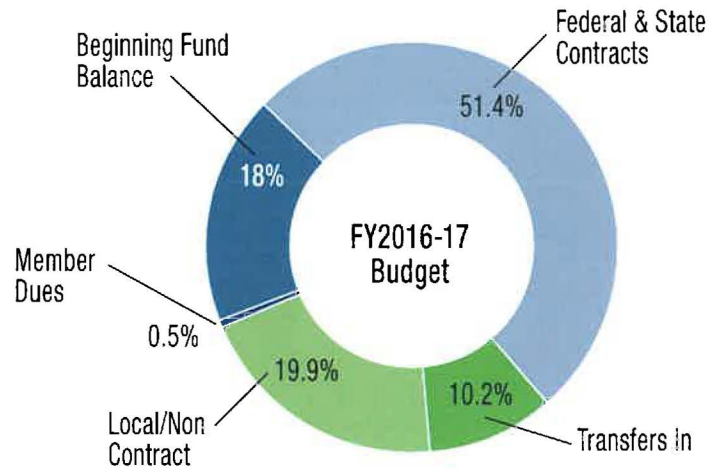
In Lane County, Oregon, the advantages of cooperation and joint ventures between local governments were recognized in the mid-1940s. Since 1945, Lane Council of Governments (LCOG) has served the jurisdictions in this community. LCOG has no taxing or ordinance authority; rather, it conducts its work at the direction and with the voluntary participation of its member agencies. Thirty-four governments and agencies are members of LCOG.

LCOG Finances

Financial support for LCOG's work is provided through annual dues paid by member agencies, by charges for special services, and by specific project-oriented federal and state grants. LCOG's FY2017-2018 budget is \$39.6 million; federal, state, and local revenues make up 72.5% of the budget; while member dues total \$211K or 0.5%.

While the member dues component of LCOG's revenue totals only a fraction of the overall budget, payment of annually adopted dues by units of local governments in Lane County provides for services to all members and the "leverage" by which LCOG is able to tap state and federal resources.

FY2017-18 Budget: \$41.3 million



\$211,200 Member Dues

\$7,111,040 Beginning Fund Balance

\$20,315,456 Federal and State Contracts

\$7,873,292 Local/Non Contract

\$4,050,873 Transfers In





GOVERNMENT SERVICES

Planning

Staffed the Lane ACT, facilitated the River Districts Group; played a leadership role in regional broadband expansion; completed a Multi-Use Path Strategy for the City of Oakland; supported code assistance projects for Oakland, Yoncalla and Coburg; began using remote tools to provide service to distant agencies like Curry County and the City of Brookings.

Public Agency Network (Pan) & Regional Fiber

Continued to play a key supporting role with the City of Eugene, EWEB, and TAO in an effort to design and deploy a publicly owned, high speed, open access fiber network in downtown Eugene; partnered with the City of Eugene and EWEB to initiate a mapping project to inventory PAN fiber; and continued to enhance broadband services to Oakridge, Westfir, Veneta, Merrill, and other outlying communities.

Natural Resources

Participated in a Division of State Lands Tech Advisory Committee on rules for wetlands; secured EPA grant to support several state natural resources agencies in providing tools and methods for small Oregon cities to assess the benefits of wetlands and associated natural resources.

Telecommunications

LCOG began a telecom system replacement project for the Telecom Consortium, replacing the end-of-life current system with a Voice over Internet Protocol (VoIP) system, integrating the voice and data networks.

Legal Services

Served as hearings official in over 40 hearings on land use appeals, animal regulation and air pollution violations; provided city attorney services to Coburg, Lowell, Lakeside, and Oakland, and legal advice in response to individual service requests from other agencies; assisted several local governments to renew

cable and natural gas franchises; currently negotiating a cable franchise renewal with Comcast for Lane County, Springfield, and Eugene and working to finalize renewals of dark fiber leases on behalf of the Regional Fiber Consortium.

Grant Services

Worked with partner agencies to write over \$7 million in successful grant applications for Lane County Community Corrections, Lane County Behavioral Health, the DA's Office, the Sheriff's Office, Eugene Police Department, Eugene Emergency Management, Eugene Planning and Development Department, EWEB, Sponsors Reentry Services, Kids' FIRST Center, and Lane ESD; also assisted partners with grant administration, reporting, and program evaluation on a significant proportion of successful grants which span a variety of content areas.

Community Safety

Provided professional and administrative support for the PSCC and the PSCC Budget Committee, Workplan Workgroup, Adult Reentry Task Force, and Behavioral Health & Criminal Justice System Workgroup; and prepared the Lane County Community Corrections Plan, Justice Reinvestment Act Grant Program Plan and application, and Criminal Justice System Data Book.

Transportation

Partnered with Lane County on the first regional transportation safety plan and launched a safety coalition to reduce fatal and severe crashes throughout Lane County; worked to obtain federal funds for projects to improve air quality, congestion, and safety in our area; and continued to expand the regional data portal, providing transportation-related data including crash, transit, and population data, traffic counts, and transportation options.

Economic Development

Packaged 10 loans for small businesses expected to help create over 150 jobs; and staffed the Lane

Economic Committee, a forum for Lane County development agencies and local businesses to explore economic development ideas for Lane County.

Applied GIS Data Services and RLID

Assisted member jurisdictions with preparations for the 2020 Census; continued to provide data support for critical State and local systems such as E-911 emergency response, e-Permitting, EWEB's Water Quality Protection Program, and others; kicked-off a regional initiative to review current tech needs as well as collaborative and strategic opportunities for the regional GIS Cooperative Partnership; currently looking at shared GIS resources including the Regional Land Information Database (RLID), technical services, and partnership governance and funding models to adapt and optimize the RLID system and regional GIS partnership for the coming years.

Information Services

Installed new servers in Coburg, Cottage Grove, Florence and Lowell; participated in the RFQ process for an ERP system with the City of Veneta; developed new applications for LRAPA and Senior & Disability services; assisted Food For Lane County and Meals on Wheels with a new joint website; custom programmed a visual data portal for a public safety project; and worked with staff from Siuslaw Valley Fire & Rescue and Western Lane Ambulance District to install a fiber bridge between the agencies to consolidate administration and services.

Metro Television

Metro TV received a national award for a video produced for the city of Eugene, "Working City: Airport Remodel;" continued to upgrade equipment to better serve their customers, now having the capability to cover meetings from any location, streaming over the internet and cablecasting live; began webcasting on a new webcasting and archiving tool, enabling residents to watch public meetings from any computer, pad, or mobile device.



Senior Connections

The Senior Connections program has offices in six Lane County communities staffed with Area Coordinators and volunteers who help older adults aged 60+ continue to live independently in their own homes. Senior Connections Area Coordinators completed the following:

- 1,136 consumers received case management services
- 240 consumers matched with volunteers of the Elder Help and Senior Companion programs
- 242 consumers received assistance with 10,663 rides to medical appointments through the Rural Escort program
- 663 consumers received LIHEAP (energy assistance) funds
- 3,513 consumers received an LTD transportation assessment
- 1,080 consumers received Information & Assistance
- 100 consumers received Family Caregiver Respite or related supplemental services
- 23 consumers received PEARLS services, an evidence-based depression intervention program

Aging and Disability Resource Connection (ADRC)

The ADRC is a free service that offers the public a single source for information and assistance on issues affecting older adults and people with disabilities, regardless of income. The ADRC may be reached at 541-682-3353, or by visiting www.ADRCofofOregon.org. Walk-ins are welcome at S&DS locations. ADRC staff received over 16,000 phone calls last year with a 40 second average call wait time.

Senior Meals Program – offering Café 60 Dining Rooms & Meals on Wheels

The delivery of Meals on Wheels in Eugene is contracted with FOOD for Lane County. S&DS delivers Meals on Wheels in Springfield and outlying communities and operates Café 60 locations:

- 182,623 Meals on Wheels meals delivered
- 58,030 meals served at 11 Café 60 Dining Room locations
- \$342,572 fundraised for Senior Meals in Lane County

Other Community Programs

- 90 individuals received a total of 1,953 volunteer hours of financial assistance through the Oregon Money Management Program.
- 1,133 individuals received a total of 3,374 hours of no-cost legal services through the Senior Law Program, a partnership with Lane Legal Aid and Advocacy Center.
- 158 individuals participated in 16 Living Well workshops, an evidence based health management curriculum developed by Stanford University.

Oregon Project Independence (OPI)

OPI provides limited in-home services to people 60 and older who need help to continue living independently in their own homes. In 2015, S&DS was selected as a 'Pilot' area to expand OPI services to adults age 19-59 with disabilities.

- 76 consumers age 19-59 with disabilities received services through the OPI Pilot program
- 126 consumers age 60 and older received OPI services. Due to new biennium budget restrictions, the OPI caseload experienced continued reductions
- 20,992 hours of in-home care provided
- 74 consumers received help with assistive technology devices

Oregon Health Care Plan (OHP) & SNAP (Food Stamps)

- 18,635 total open cases
 - 717 average cases per Eligibility Services Worker
- As the Lane County population continued to age, the S&DS office received on average:
- 249 new SNAP/Medical cases per month

Facilities Case Management

Facilities Case Managers are responsible for plans of care and ensuring appropriate placement

into facilities when in-home care is not possible including: Assisted Living, Residential Care, and Nursing/Memory Care. There are 1,247 S&DS clients locally residing in these facilities.

Transition and Diversion

Staff provides intensive case management for individuals to either transition out of nursing facilities back into the community or divert an individual from a nursing facility placement. Over the course of the year, staff provided transition and diversion services to 190 referred clients. Of this amount, 57 were either diverted or transitioned from nursing facilities, with an estimated cost savings of \$3.8 million during the year.

In-Home/Community Based Care

Case Managers provide plans of care and arrange for services to individuals to remain living in their own homes or in Adult Foster Homes.

- 97 average cases per Case Manager
- 4,232 consumers received services
- 2,901 Active Home Care Workers
- 9 In-Home Agencies providing assistance to Medicaid consumers

Adult Foster Homes

S&DS licenses and monitors the care of consumers who live in Adult Foster Homes across Lane County. There are currently 88 located in Lane County. Most are licensed for up to 5 people. 257 S&DS consumers are currently residing in this type of setting.

Adult Protective Services

Adult Protective Services (APS) is responsible for investigating reports of abuse and neglect of Lane County's seniors and people with disabilities.

- 2,566 investigations were completed with 31% substantiated
- Neglect of care by a caregiver and financial exploitation were the top two abuse types
- 190 cases were referred to law enforcement resulting in 37 prosecutions with a 59% conviction rate.



LCOG Executive Director

Brenda Wilson
541-682-4395
bwilson@lcog.org

Government Services Director

Howard Schussler
541-682-4007
hschussler@lcog.org

S&DS Director

Jody Cline
541-682-4432
jcline@lcog.org

Finance & Budget

Keina Wolf
541-682-3044
kwolf@lcog.org

Human Resources

Joshua Burstein
541-682-4502
jburstein@lcog.org

PLANNING SERVICES

Business Loans
Steve Dignam
541-682-7450
sdignam@lcog.org

**Planning & Development Services,
Legal Services**

Ann Davies
541-682-4023
adavies@lcog.org

**Transportation, Central Lane Metropolitan
Planning Organization**

Paul Thompson
541-682-4405
pthompson@lcog.org

Natural Resource Planning

Denise Kalakay
541-682-7415
dkalakay@lcog.org

Grant Writing, Community Safety

Susan Sowards
541-682-7493
ssowards@lcog.org

INFORMATION SERVICES

**Geographic Information Systems & Data
Services, RLID**
Eric Brandt
541-682-4338
ebrandt@lcog.org

Metro Television

Neil Moyer
541-682-3799
nmoyer@lcog.org

**Regional Technology Services,
Telecommunications**

Heidi Leyba
541-682-4452
hleyba@lcog.org

**SENIOR & DISABILITY SERVICES
(S&DS)**

**Senior Connections
Family Caregiver Support
Aging & Disability Resource Connection
Home & Community Care**
541-682-4038

Senior Meals Program

541-682-4378

859 Willamette St. Suite 500, Eugene, OR 97401 • Ph. 541-682-4283 • Fx. 541-682-4099 • www.lcog.org



Updated January 2018. Photo credits: Paula Taylor, Ann Terrell

FISCAL YEAR 2016-2017

SENIOR & DISABILITY SERVICES INFORMATION & ASSISTANCE



Director's Message

Senior & Disability Services (S&DS), a division of Lane Council of Governments, is the Area Agency on Aging and Disability Services for Lane County, Oregon. In this role, the agency is responsible for planning and administering programs and services for older adults and adults with physical disabilities or dementia. Services are financed by contributions from participants, donations from individuals and groups, grants, and by local, state, and federal government funds.

S&DS is first and foremost about the people we serve, their families, and their communities.

Our Mission: “To advocate for seniors and persons with disabilities and provide to them quality services and information that promote dignity, independence, and choice.”

In addition to our continued focus on delivering our mission, S&DS has continued work on the goals and objectives in our multi-year Area Plan. To view the Area Plan, visit www.sdslane.org/299/SDS-Area-Plan-and-Supporting-Documents. These efforts will help us to continue providing excellent service, treating others with respect, and achieving excellence in all we do. Thank you to all who continue to help us move into the future.



Jody Cline, Director
Senior & Disability Services



Table of Contents

Information & Assistance (ADRC).....	2
Senior Connections	3
Senior Meals	4
Oregon Project Independence	5
Community Programs	6
Eligibility Services	7
In-Home & Community Based Care	8
Adult Protective Services	9
Program Data Comparison.....	10

Information & Assistance (ADRC)



Aging and Disability Resource Connection (ADRC) provides access to services offered by Senior & Disability Services and information about other resources in the community for older adults and adults with disabilities.

call: 541-682-3353 or 1-800-441-4038 (toll free)

email: ADRCLane@lcog.org

walk in: 1015 Willamette Street, Eugene, OR 97401

visit the statewide website: www.ADRCoforegon.org

Where can I turn to find services that will help my parents stay in their home?

ADRC can help connect you to home and community based resources, including:

- Transportation
- Caregiver Support
- Friendly Visitors
- Meals

Who can help me navigate this complex maze of services?

ADRC Options Counselors provide professional guidance on complex issues.

Can someone explain the different housing options available for older adults?

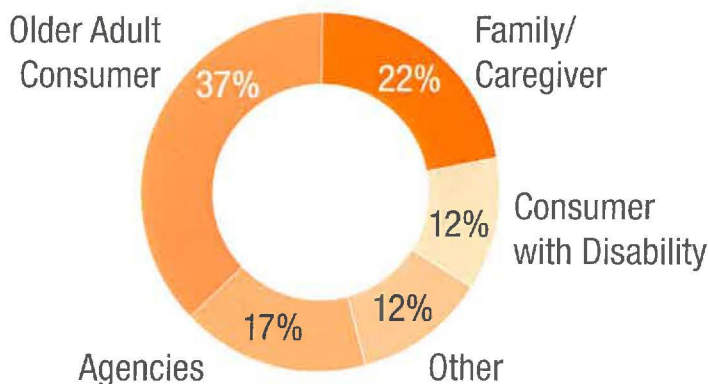
Visit our website, www.ADRCoforegon.org, to access a tool to compare different housing options.



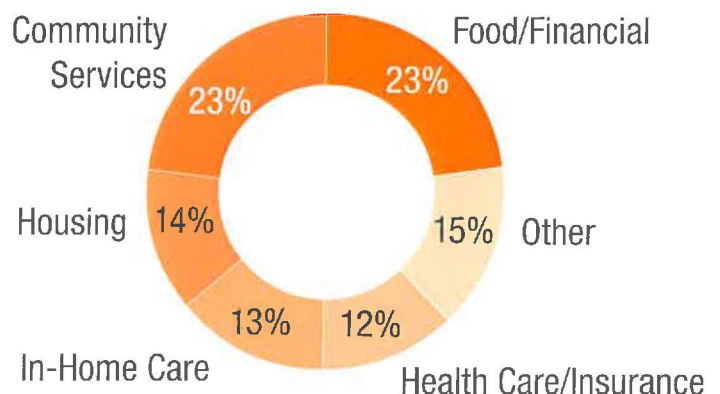
16,160
Phone calls answered

40 seconds
average call wait time

Type of Callers



Caller Needs



Senior Connections

Senior Connections has six offices serving eight Lane County communities, including: Eugene, Springfield, Oakridge, Cottage Grove, Creswell, Junction City, Veneta, and Florence. Area Coordinators assist older adults and caregivers with services to help seniors live independently in their own homes. Services include caregiver respite, transportation, energy assistance, and more.



Can I get assistance in paying my utility bills?

You may qualify for LIHEAP Energy Assistance.

I live out of the metro area and I need help getting to medical appointments.

The Rural Escort Program has volunteers that can give you door-to-door help in getting to medical appointments.

"This time is a precious gift, I am able to come back refreshed and continue to take care of my wife here in our home and that is important to me."

"I did benefit. She helped me look at my problems with ways to solve them one at a time."



1,136

People received Case Managed Services through the Older Americans Act



3,513

Assessments for LTD Medicaid/ADA transportation assistance

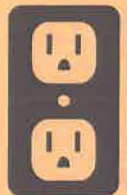
8,421

Rides provided by volunteer drivers



663

People received energy assistance



3,621

Respite hours paid for family caregivers



242

People received rides to medical appointments

Senior Meals: Café 60, Meals on Wheels



The **Café 60 Dining Rooms** provide mealtime companionship and nourishing meals to older adults age 60+. **Meals on Wheels** delivers hot meals to homebound older adults age 60+. S&DS delivers Meals on Wheels in Springfield and outlying communities as well as operates all Café 60 dining rooms. The delivery of Meals on Wheels in Eugene is contracted with FOOD for Lane County.

\$342,572

Raised for Senior Meals Program in Lane County

Café 60 serves tasty, nourishing noon meals in friendly dining rooms in nine Lane County communities.

Meals on Wheels (MOW) offers nourishing meals and a regular safety check to home bound older adults in eight Lane County communities.

"I get a hot balanced meal each day at the Café 60. The food is healthy and I like the variety... it is nice to get out of the house and eat with friends."

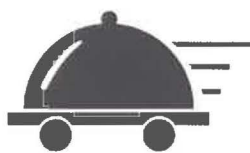
"I just love when you come! I not only enjoy the wonderful food, but I get to visit with the volunteers and this gives me a reason to get up and get dressed in the morning!"

"Mom was able to stay in her home 2 ½ years longer because of Meals on Wheels. She was fiercely independent and very proud that at 91, she still lived in her own home."



1,285

People received meals through MOW



182,623

MOW meals delivered

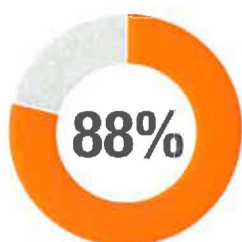
649

People served in Café 60



58,030

Meals served at Café 60



of surveyed participants said the program helped them maintain their independence.



of surveyed participants said the program helped them maintain or improve their health.

Oregon Project Independence

Oregon Project Independence (OPI) provides limited in-home services to older adults age 60+ who need help to continue living independently in their own homes. The goal of OPI is to prevent or delay nursing facility placements.

Services may include Housekeeping, Personal Care, Meals on Wheels, and help paying for Assistive Technology such as Emergency Response Systems and Medication Management devices. Housekeeping and Personal Care services are primarily provided by contract with Addus Health Care.

In 2014, S&DS was selected as a pilot location to test the expansion of OPI to adults with disabilities ages 19-59 and has proven a valuable addition.



My husband is 48 and has a disability, could he qualify for OPI?

Yes, adults ages 19 – 59 may qualify for OPI in Lane County thanks to a Pilot Program expanding services to adults with disabilities.

I cannot manage everything myself anymore and am worried I will have to move into a nursing home. I need just a little assistance, can OPI help me?

OPI may provide that little bit of help to keep you independent. The goal of the program is to keep you in your home and out of a nursing facility.

Age of OPI Recipients	
age 19-39	9
age 40-59	67
age 60-74	36
age 80+	90

OPI recipients: Adults age 60+

OPI Pilot recipients: Adults with disabilities age 19-59

126

76

People received OPI services

20,992

12,161

Hours of in-home service provided



Participants received Assistive Technology help



Participants live alone

Community Programs



Reassurance – ElderHelp

Older adults living alone can be socially isolated, which can lead to depression. The **ElderHelp** Program matches them with qualified volunteers to help with things such as grocery shopping and yard work, or just reading a book.

53 People Served, 2,570 Volunteer Hours

Stanford Living Well Workshops

These free six-week evidence-based workshops help participants learn how to better manage chronic conditions by learning about nutrition, exercise, medication management, and communication skills. S&DS currently offers three Living Well programs: Chronic Conditions, Chronic Pain, and Diabetes.

158 People Served, 16 Workshops Offered

Senior Law – Oregon Law Center

Civil legal consultations are provided free of charge. Services are based in community centers throughout Lane County.

1,133 People Served, 3,374 Attorney Volunteer Hours

Money Management

Money Management services help adults remain as independent as possible. Volunteers help with bill paying or act as Representative Payees for Social Security Benefits.

90 People Served, 1,953 Volunteer Hours

Eligibility Services

Eligibility Services workers determine eligibility for the Supplemental Nutrition Assistance Program (SNAP, formerly Food Stamps) and many state and federally funded medical programs for those not in need of in-home or facility based services.

SNAP is a federal nutrition program designed to supplement the food budgets of people with a low income. Benefits may be used at grocery stores, farmers markets and other approved food retail stores. Benefits may be spent on food or plants and seeds to grow nutritious vegetables and fruits at home.

Medical program eligibility determined by S&DS include Medicaid and Medicare Savings Programs for low income older adults age 65+ and adults with disabilities. Medicare Savings Programs may help cover the costs of Medicare premiums and for those with very low income, Medicare deductibles and co-pays.



Who qualifies for SNAP (Food Stamps) through S&DS?

Adults with disabilities age 18+ or older adults age 60+ that meet eligibility requirements.

Will someone speak my language when I register for services?

Yes, staff is available on site for Spanish, Russian, and ASL. Accommodations will be made for all languages.



2,992

New requests for SNAP or medical services

18,635

Total SNAP or medical services cases

717 Average caseloads per worker

"I have always had a positive experience with this office...I am treated with kindness and good humor."

"I truly appreciate the combination of kindness and professionalism by my worker. The rest of the staff is always courteous as well."

"I'm more than a little embarrassed to need help, but you've made it easier."

In-Home & Community-Based Care



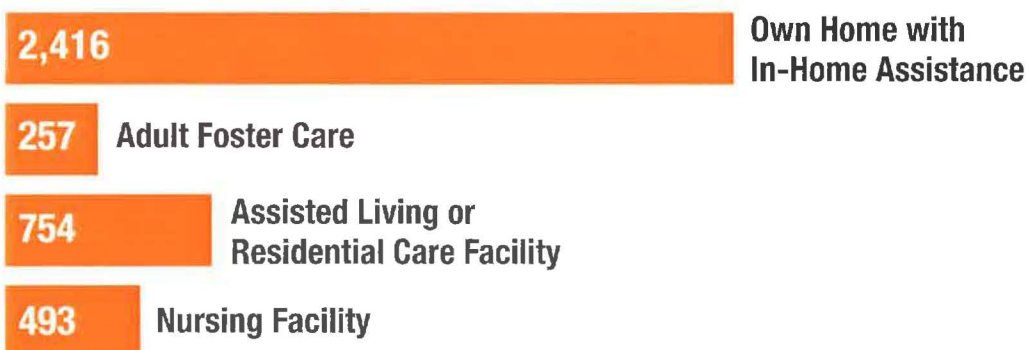
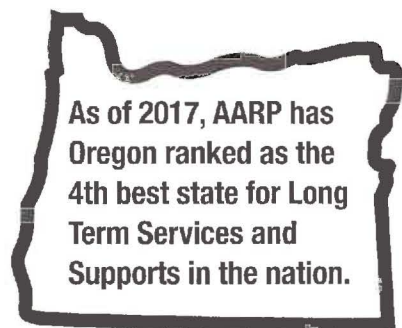
Case Managers coordinate Medicaid and state funded programs to provide **In-Home and Community-Based Care** to keep older adults age 60+ and adults with disabilities living as independently as possible in the community. Specialized Case Managers also assist with hospital discharge planning and transitioning clients from more restrictive facilities to home or community-based care. Facilities Case Managers work with individuals in nursing homes and other long term care facilities.



The Transition & Diversion program helps individuals avoid unnecessary placements or lengthy stays in nursing facilities.



In-Home and Community-Based Care housing distribution through Case Managed Services



Adult Protective Services

Adult Protective Services is responsible for responding to all allegations of abuse or neglect involving older adults age 65+ and adults with physical disabilities. S&DS is also responsible for investigating allegations of abuse or neglect involving residents of licensed care facilities such as adult foster homes, residential care facilities, assisted living facilities and nursing homes.



Abuse Allegation	Investigated	Substantiated
Potential Financial Exploitation	669	28%
Potential Neglect by Caregiver	799	43%
Potential Verbal Abuse	360	30%
Potential Self Neglect	417	20%
Potential Physical Abuse	214	29%
Potential Sexual Abuse	33	12%
Potential Abandonment	21	19%
Other Reasons	53	13%

Neglect by caregiver and financial exploitation are the most common types of abuse.

Referrals for Legal or Criminal Action	Number of Cases	% change from FY16
Referred to Law Enforcement	190	-5%
Investigated	99	-16%
Referred for Prosecution	37	-39%
Resulting Convictions	22	-27%

Abuse can happen in a person's own home or the home of family or friends. It can also occur in a professional care setting such as a nursing facility, a residential care facility, an assisted living facility, an adult foster home, a retirement home or a room and board home.

Residential Type	Investigated	Substantiated
Adult Foster Home	68	34%
Assisted Living Community	131	54%
Community	1,665	23%
Home Care Worker	117	33%
Nursing Facility	129	36%
Residential Care Facility	433	54%
Contract In-Home Services	27	22%

Program Data Comparison

Three Year Fiscal Year Comparison

Aging and Disability Resource Connection (ADRC)	FY17	FY16	FY15	% Change FY16 to FY17
ADRC Call Type by Percentage				
Food/Financial	23%	31%	43%	-8%
Health Care / Insurance	12%	11%	3%	1%
In-Home Care Needs	13%	22%	15%	-9%
Other ADRC Data				
Phone Calls Answered *Phone tree now split, only Info & Assistance calls route to ADRC	16,160	20,753	21,933	-22%

Senior Connections	FY17	FY16	FY15	% Change FY16 to FY17
Persons Receiving Case Management	1,136	1,144	724	-1%
Assessments for LTD Rides *Continue to see increased need for ADA rides	3,513	2,992	2,219	17%
Volunteer driver rides *Less volunteers across ride programs	8,421	10,662	11,662	-21%
Persons who Received Energy Assistance *Funding restraints	663	730	1,088	-9%

Senior Meals	FY17	FY16	FY15	% Change FY16 to FY17
Persons who Received MOW	1,285	1,306	1,080	-2%
Total Meals Delivered	182,623	179,449	158,122	2%
People Served at Café 60	649	665	612	-2%
Total Café 60 Meals Served	58,030	59,553	59,046	-3%
Total Senior Meal Fundraising	\$342,572	\$326,189	\$281,721	5%

Oregon Project Independence	FY17	FY16	FY15	% Change FY16 to FY17
Total person 60+ with any OPI service *Severe funding restraints	126	345	429	-63%
Total persons 19-59 with disabilities with any OPI service	76	69	51	10%

Program Data Comparison

Community Programs	FY17	FY16	FY15	% Change FY16 to FY17
Reassurance - Elder Help				
People Served	53	51	49	4%
Total Volunteer Hours	2,570	2,962	2,970	-13%
Living Well Workshops				
People Served	158	180	114	-12%
Workshops Offered	16	18	11	-11%
Senior Law - Oregon Law Center				
People Served	1,133	1,311	1,089	-14%
Total Volunteer Hours	3,374	3,466	3,192	-3%
Money Management				
People Served	90	82	54	10%
Total Volunteer Hours	1,953	2,828	1,970	-31%
*Program change, now a blend of staff & volunteers				

Eligibility Services: SNAP & Medicaid	FY17	FY16	FY15	% Change FY16 to FY17
Average Worker Caseload	717	645	643	11%
Total Open Cases	18,635	14,824	14,150	26%
*Salem no longer carries any Lane cases, all now managed locally				

In-Home & Community-Based Care	FY17	FY16	FY15	% Change FY16 to FY17
Living Situation				
Living in Own home	2,416	2,521	2,584	-4%
Adult Foster Care (data reflects S&DS Medicaid beds only)	257	279	441	-8%
Assisted Living/Residential Care Facility	754	675	774	12%
Nursing Facility	493	485	507	2%
Other Case Managed Data				
Average Worker Caseload	97	99	111	-2%
Total Persons Served	4,232	4,753	4,434	-11%
Total Registered Home Care Workers	2,901	2,946	2,290	-2%
Transition & Diversion				
Total T&D Referrals	190	346	300	-45%
*Program reduced 33%				
Transitions from Nursing Homes	52	84	130	-38%
*Program reduced 33%				
Diversion from Nursing Homes	5	10	9	-50%
*Program reduced 33%				

Program Data Comparison

Adult Protective Services	FY17	FY16	FY15	% Change FY16 to FY17
Abuse Allegation Types Investigated				
Potential Financial Exploitation	669	665	706	1%
Potential Neglect by Caregiver	799	684	755	17%
Potential Verbal Abuse	360	406	355	-11%
Potential Self Neglect	417	415	373	0%
Potential Physical Abuse	214	203	205	5%
Potential Sexual Abuse	33	38	58	-13%
Potential Abandonment	21	28	28	-25%
Other Reasons	53	65	41	-18%
Abuse Allegations Substantiated by Type				
Potential Financial Exploitation	28%	30%	26%	-2%
Potential Neglect by Caregiver	43%	35%	29%	8%
Potential Verbal Abuse	30%	27%	30%	3%
Potential Self Neglect	20%	19%	19%	1%
Potential Physical Abuse	29%	24%	28%	5%
Potential Sexual Abuse	12%	13%	12%	-1%
Potential Abandonment	19%	32%	28%	-13%
Other Reasons	13%	20%	41%	-7%



SENIOR & DISABILITY SERVICES (S&DS)
CONTACT INFORMATION

To access any programs or services offered by S&DS or for information about other community resources, contact the **Ageing and Disability Resource Connection (ADRC):**

541-682-3353 or 1-800-441-4038 (toll free)

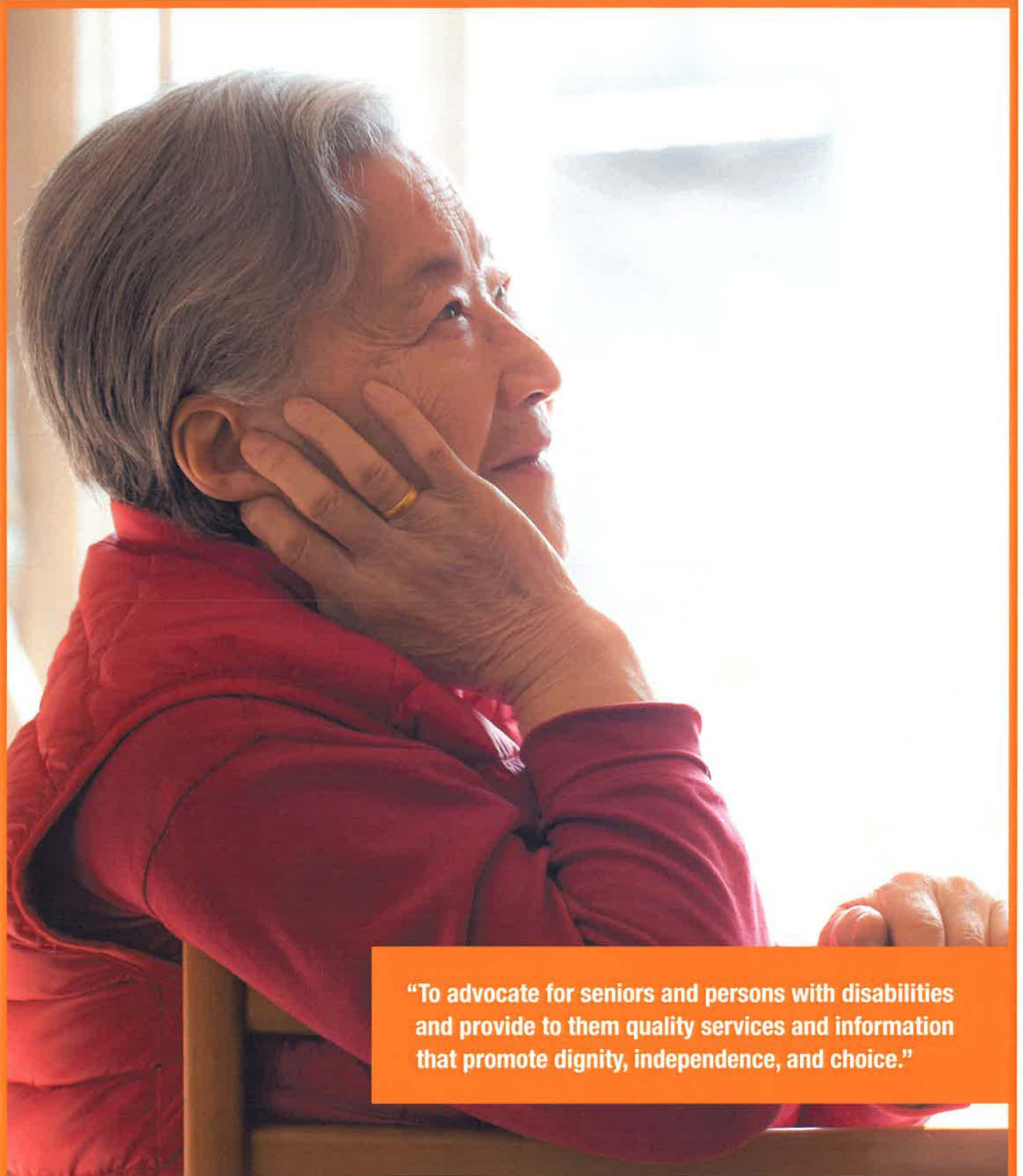
email: ADRCLane@lcog.org

website: www.ADRCoforegon.org

Senior & Disability Services is a division of
Lane Council of Governments

1015 Willamette St., Eugene, OR 97401

website: www.lcog.org



“To advocate for seniors and persons with disabilities and provide to them quality services and information that promote dignity, independence, and choice.”



Script for Annexation

Mayor: We will now begin the agenda item concerning the approval of an annexation and zone assignment request. This agenda item will allow the City Council to deliberate on the annexation and zoning of Harbor Vista Campground located at 87658 Harbor Vista road, and other surrounding areas as applied for by Lane County.

I will now turn it over to our City Recorder Kelli Weese to review the items required for a land use public hearing and officiate the public hearing procedures.

City Recorder: Thank you Mayor Henry. This evening we will be holding a public hearing concerning Ordinances 2 and 3 Series 2018.

These proceedings will be recorded.

This hearing will be held in accordance with the land use procedures required by the City and the State of Oregon. This is a legislative land use action involving proposed changes to the City's zoning regulations under Title 10 of the Florence City Code.

Staff has identified the applicable substantive criteria from the City's Zoning Regulations, Florence Comprehensive Plan, and State Law. These criteria have also been listed in the staff report.

For anyone wishing to speak, we are asking you complete a speaker's card which was provided as you walked in the room. Is there anyone in the room who would like to speak at this public hearing who has not completed a speakers card? ***[if yes, then distribute]***

When coming up to speak, you must state your name for the public record. We ask for your address on the speaker's card so that we may provide you notice on the City's eventual decision in this matter. Speaker's comments will be limited to five minutes per person and speaker's may not yield their time to others.

Written testimony may also be offered and will be considered and made part of the record. To do that, either before or after you speak, please leave the material with me. I will then make sure your evidence is identified and placed in the record.

With those instructions about the public hearing out of the way, I will ask if any Councilor wishes to disclose an actual or a potential conflict of interest in this matter.

Councilors: Makes Declarations *(if any)*

[If Declarations are Made]

City Recorder: Councilor _____, do you believe that you can make a decision on this issue in an impartial manner?

Councilors: *(Councilor replies, if yes continue; If no, Councilor may recuse him/herself)*

City Recorder: Any person, during his or her testimony, has the right to rebut the substance of the ex-parte communications just disclosed.

Does any member of the public wish to challenge a Councilor's impartiality?

(If none, move on; If some, Councilor has the opportunity to rebut statement and makes a decision whether or not to continue or to recuse him/herself)

[actual conflict of interest – Councilor must announce the conflict and step down]

[potential conflict of interest - Councilor must announce the conflict & state whether (s)he is able to be impartial. If so, Councilor may participate; if not, decision-maker must step down]

[ex parte contacts - Councilor must announce the substance and context of the communication, then may participate.]

[Return to Script]

City Recorder: I now open the public hearing for Ordinances No. 2 and 3, Series 2018, it is _____ o'clock.

[Staff Report]

City Recorder: May we please have the staff report

Planning Staff: Presents Staff report

[Staff introduces the topic, staff report, and presents background information, and states list of criteria for approval]

City Recorder: Does any Councilor have questions of the staff?

[Council Questions of Staff – No Deliberations]

[PUBLIC HEARING PROCEDURE]

City Recorder: We will now begin the taking public testimony. Copies of the written comments received prior to the hearing this evening have been distributed to the City Council. Testimony will be received from the applicant, proponents, opponents, and those that are neutral.

[Applicants]

City Recorder: We will now begin the public hearing starting with the applicant, Mr. / Ms. _____. Please feel free to come up to the table to speak.

Applicant: Gives Testimony **[if any]**

City Recorder: Councilors, do you have any questions of the applicant?

Councilors: Ask Questions **[if any]**

[Proponents]

City Recorder: We will now take testimony from proponents, Mr. / Ms. _____. Please feel free to come up to the table to speak.

[OR]

There have been no proponents who have signed up to speak. Is there anyone in the room who has not completed a speaker's card but would like an opportunity to speak in favor of the proposal?

[If someone comes forward]

Please give your name when you come to the table to speak, and make sure to complete a speaker's card.

Proponents: **[if any]**

City Recorder: **[After each speaker]** Councilors, do you have any questions of Mr. / Ms. _____.

[Opponents]

City Recorder: We will now take testimony from opponents, Mr. / Ms. _____. Please feel free to come up to the table to speak.

[OR]

There have been no opponents who have signed up to speak. Is there anyone in the room who has not completed a speaker's card but would like an opportunity to speak against the proposal?

[If someone comes forward]

Please give your name when you come to the table to speak, and make sure to complete a speaker's card.

Proponents: **[if any]**

City Recorder: **[After each speaker]** Councilors, do you have any questions of Mr. / Ms. _____.

[Neutral Parties]

City Recorder: We will now take testimony from neutral parties, Mr. / Ms. _____. Please feel free to come up to the table to speak.

[OR]

There have been no neutral parties who have signed up to speak. Is there anyone in the room who has not completed a speaker's card but would like an opportunity to speak about the proposal?

[If someone comes forward]

Please give your name when you come to the table to speak, and make sure to complete a speaker's card.

Proponents: **[if any]**

City Recorder: **[After each speaker]** Councilors, do you have any questions of Mr. / Ms. _____.

[Staff Rebuttal]

City Recorder: Does the staff wish to respond to any of the testimony received?

Staff: Offers response **[if chooses]**

City Recorder: **[if staff responds]** – Councilors, do you have any questions of the staff?

[Applicant Rebuttal]

City Recorder: Does the applicant wish to respond to any of the testimony received?

Applicant: Responds **[if chooses]**

City Recorder: **[if applicant responds]** – Councilors, do you have any questions of the applicant?

[DECISION TO CLOSE OR LEAVE OPEN PUBLIC HEARING SUBJECT MATTER]

City Recorder: Now is the opportunity to discuss closing the public hearing. Does the City Council or staff see any reason to continue the public hearing or hold record open to allow for additional arguments?

Hearing none, I now close the public hearing it is _____ o'clock.

[If Public Hearing is left open or hearing is continued]

Mayor: The City Council will continue discussions on Ordinance No. 2 & 3 Series 2018 at the May 7, 2018 City Council meeting. – [DONE WITH AGENDA ITEM - MOVE ON TO NEXT ITEM ON AGENDA]

[If Public Hearing is Closed –

[City Council Deliberations / Decision]

City Recorder: Mayor Henry, will you please facilitate the deliberation on this agenda item, making sure to allow each Councilor an opportunity to speak.

(Council Deliberates)

City Recorder: Hearing no further deliberations, Mayor Henry, will you please facilitate the City Council's decision on each of the ordinances.

(MOVE TO ORDINANCE PROCEDURES)

Harbor Vista Campground Annexation & Zone Change

Ord. 2 & 3 Series 2018



Introduction

- **January 2, 2018**–Petition/Application received
- **January 26, 2018**–Deemed complete
- **March 27, 2018**–First evidentiary hearing (PC)
- **April 16, 2018**–Final evidentiary hearing (CC)

Annexation Criteria

Oregon Revised Statutes:

222.111; 222.120; 222.125; and 222.170 (2)

Florence Realization 2020 Comprehensive Plan:

Chapter 14: Urbanization, Policies 1 and 3
through 7

Zone Assignment Criteria

Florence City Code, Title 10:

- Chapter 1: Zoning Regulations, Sections 10-1-1-6-4, 10-1-2-3, and 10-1-3
- Chapter 11: Single Family Residential
- Chapter 19: Estuary, Shorelands, and Beaches and Dunes; Section 10
- Chapter 22: Open Space District; Sections 2 & 3

Florence Realization 2020 Comprehensive Plan:

- Chapter 17: Coastal Shorelands; Ocean, Estuary, and Lake Shorelands; Policies 10 & 14, and References to Management Unit #50

Vicinity Aerial Map

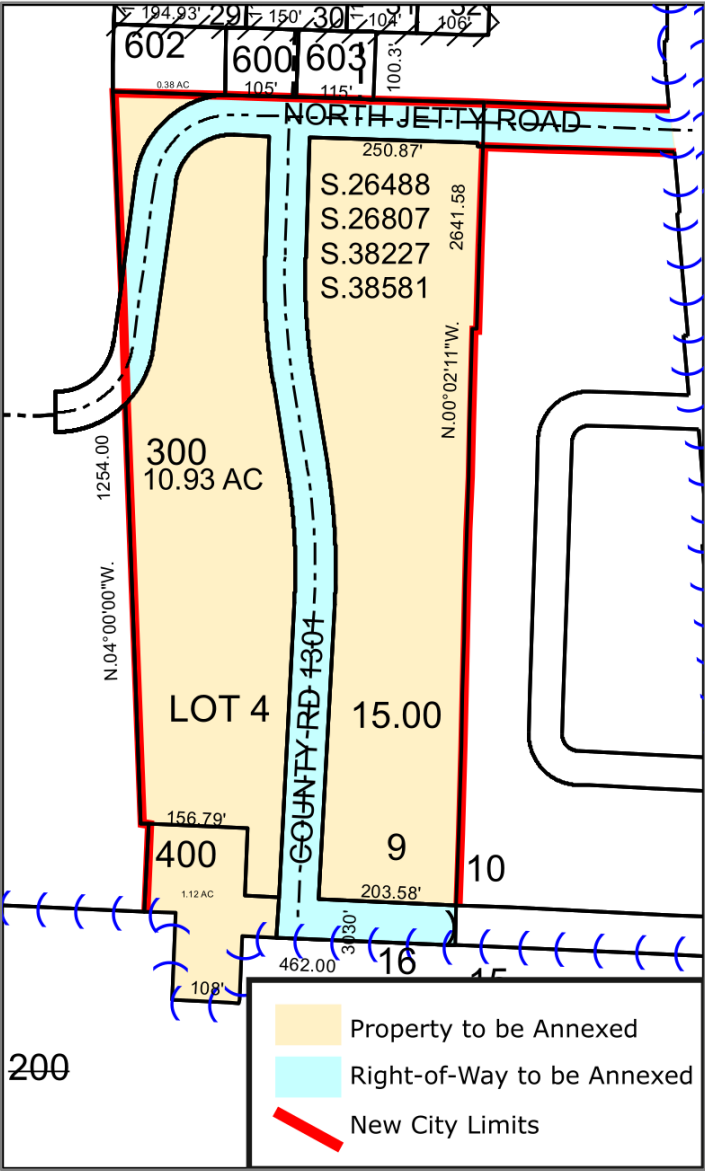


Rhododendron Dr.

S. Harbor Vista Dr.

Ord. 2. Series 2018

Area of Proposed Annexation



Consents

- Double & Triple Majority methods are met

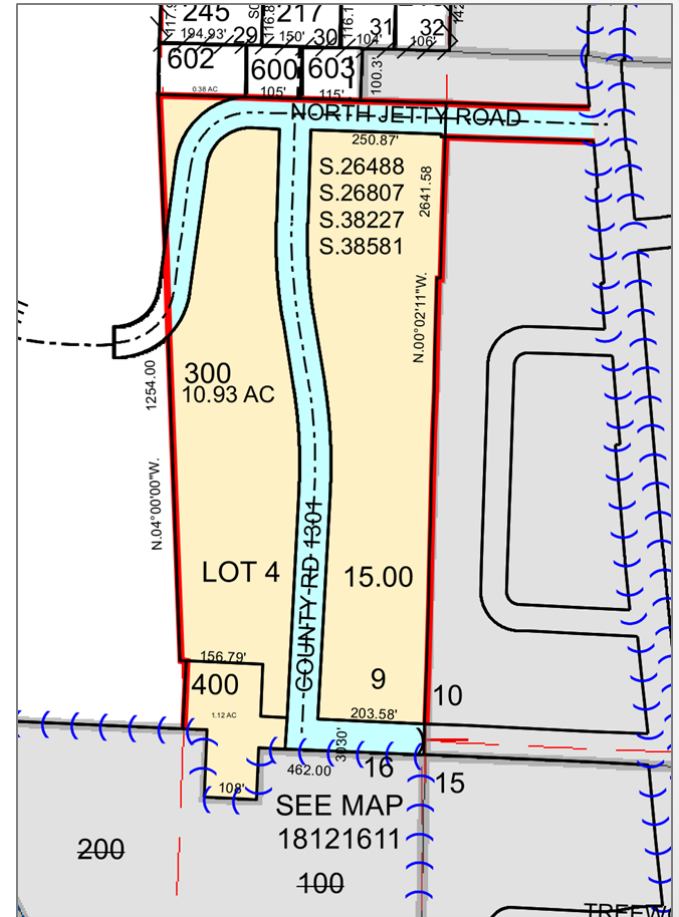
Utilities & Access

- Water: Remain on Heceta Water
- Sewer: Internal gravity system with regional pump station connecting to existing pressure sewer in Rhody.
- Access: Existing street system

Referral Comments

Exhibit C:

- Public Works Dept.:
 - .555 mgd excess sewer capacity
- Police Dept.:
 - Has capacity to expand police response from current emergency response levels.

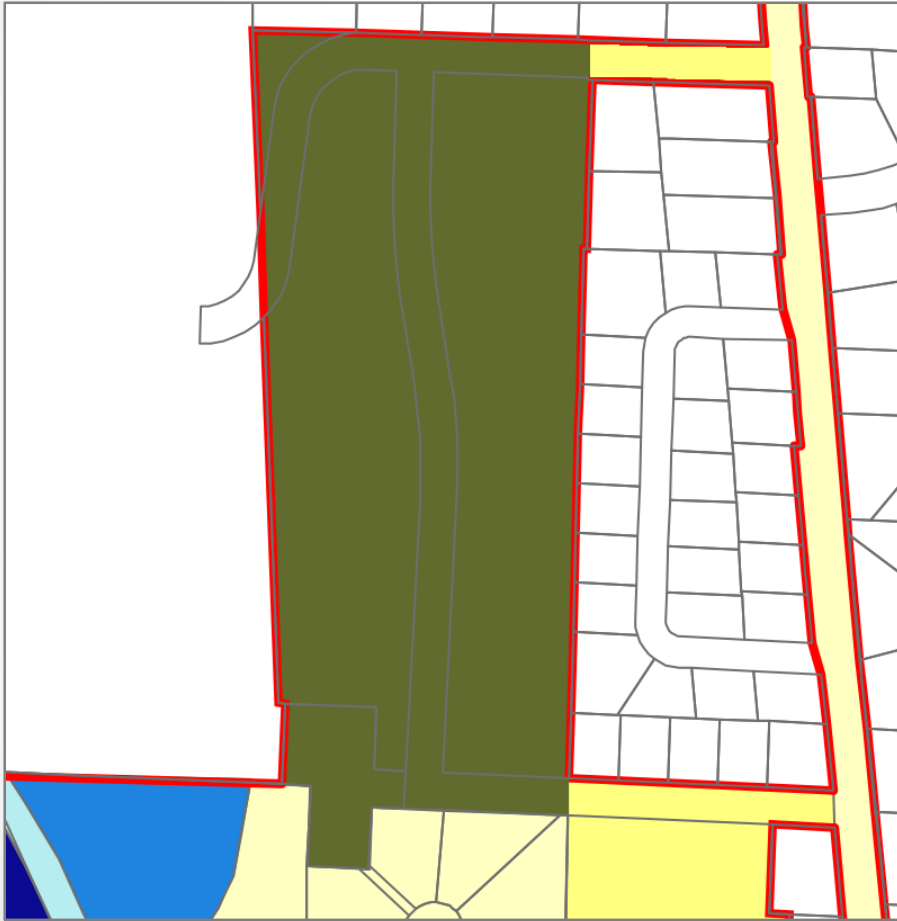


Public Comments

- Leah Patten, 3-27-18 Verbal
 - Lack of an Annexation policy supporting “no forced annexation.”
 - Inconsistent illustration of western extent of annexation
- Michael Allen, 4-5-18 Written
 - Sewer extension to ADA camping spaces

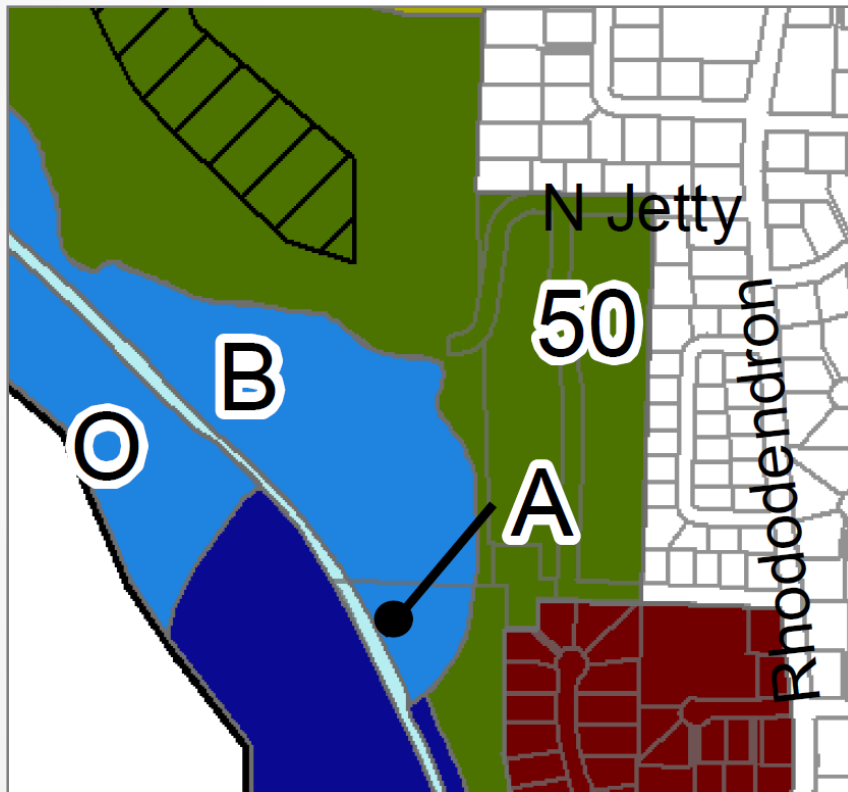
Ord. 3, Series 2018

Zoning Assignment



- **Open Space:**
Campground, West section of North Jetty Rd., Harbor Vista Rd., and S. Harbor Vista Dr.
- **Single Family Residential District:**
East section North Jetty Rd.

Zoning Assignment



- Natural Resource Conservation Shoreland Management Unit Overlay

Public Comments

- Leah Patten, 3-27-18, Verbal, Concern for wetland removal and marina placement west of Campground

Planning Commission Recommendation

- Approve Ord. 2, Series 2018 Annexing property as identified in Ord. & described in Exhibits A1 & 2
- Approve Ord. 3, Series 2018 Assigning zoning as identified in Ord. 3 & illustrated in Exhibit A

Alternatives

1. Approve annexation and zone assignment, or
2. Deny the petition for annexation and zone assignment with reasons for the denial, or
3. Modify the findings or conditions and approve the annexation and zone assignment, or
4. Continue the Public Hearing to a date certain if more information is needed.

Questions?



Distributed at
4.16.18 City
Council Meeting -
Agenda Item #5 -
Public Hearing -
Michael Allen



Harbor Vista Campground "Handicapped" Site 4



Harbor Vista Campground Site 2



Harbor Vista Campground

Site 2



Harbor Vista Campground

Site 2



Harbor Vista Campground

Site 2

Presented at
4.16.18 City
Council Meeting -
Agenda Item # 6

All Roads Transportation Safety (ARTS) Program



City of Florence
A City in Motion

What is ARTS

- Federally funded through Highway Safety Improvement Program (HSIP)
- Transportation safety program for all public roads
- Goal is to reduce fatalities and serious injury
- Requires Performance-Based Measures
- Maintains emphasis on data-driven approach
- 2011-2015 or 2012-2016 data only

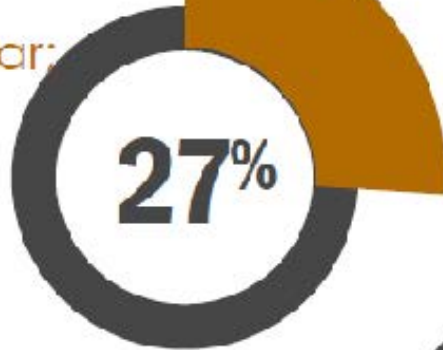


HSIP was traditionally only spent on State Highways, but 50% of our Fatal and Serious Injury crashes occur on local agency roads

Statewide

City Streets

- 518 fatalities and serious injuries per year;
- 10,000 miles



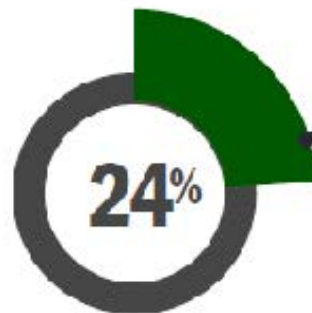
State Highways

- 954 fatalities and serious injuries per year;
- 8,000 miles



County Roads

- 454 fatalities and serious injuries per year;
- 26,000 miles



Based on 2011-2015 data

ARTS Program Principals

- Reduce fatalities and serious injuries
- Address safety on all public roads
- Data-driven and blind to jurisdiction
- Overseen by ODOT Regions
- Allocated to each ODOT Region based on fatalities and serious injuries
- Engage local agencies in the project selection process

Hot Spot



Targets locations with histories of fatal and serious injury crashes

Systemic



Systemic approach uses ***low-cost countermeasures*** that can be widely implemented to reduce fatalities and serious injuries

Anticipated ARTS Funding

2022-2024 STIP – Region 2

Region 2:
35.7% of total
funding

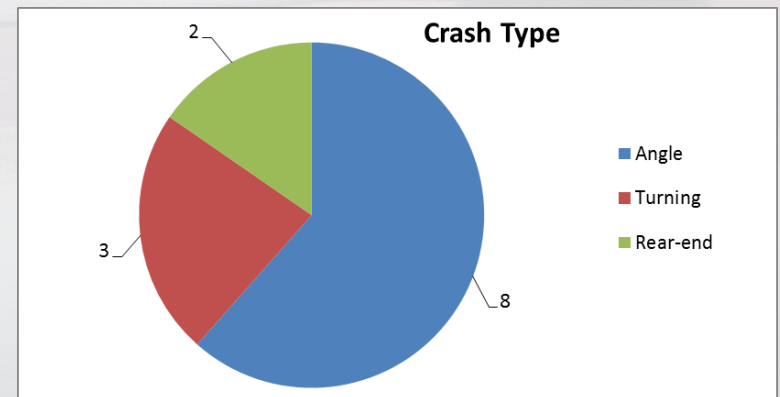
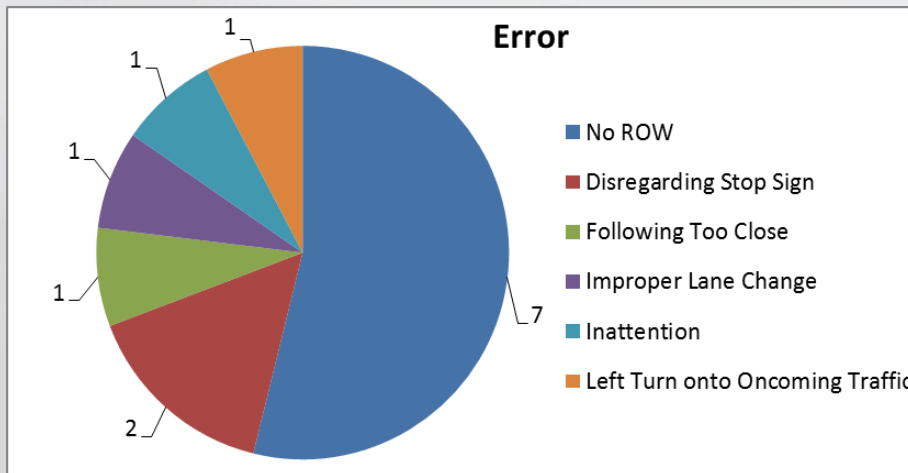


Approx.
\$10.4M per
year
for 3 years

Note: 7.78% local match for projects

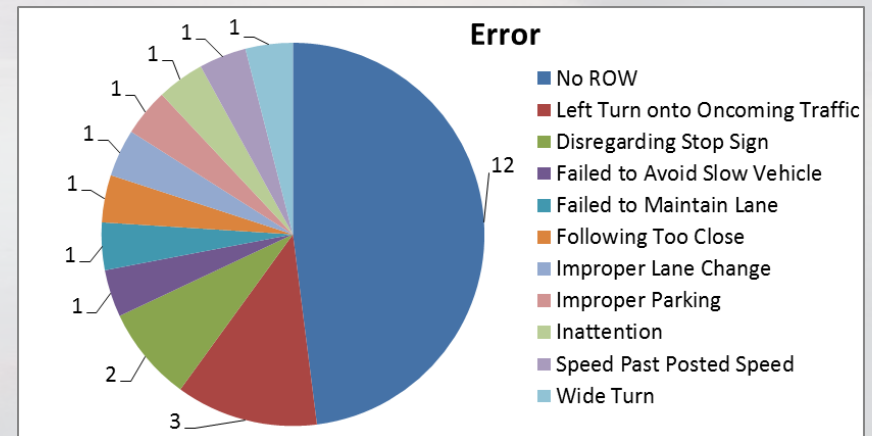
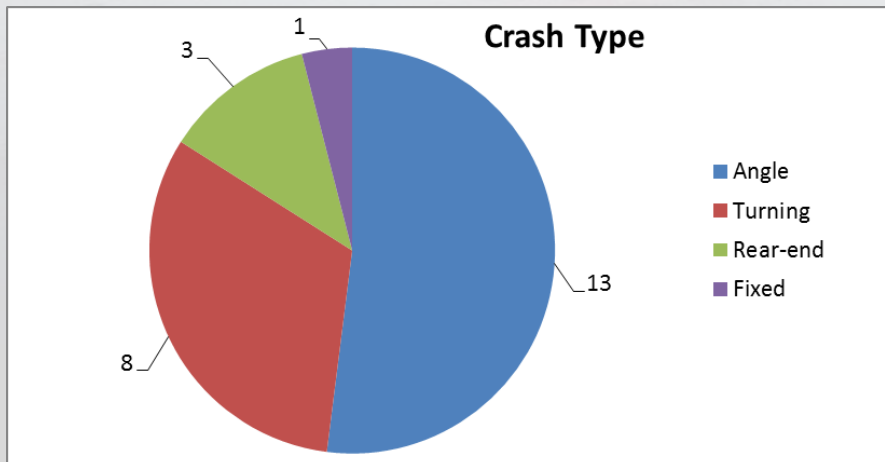
Hot Spot – 9th & Kingwood

- 13 accidents between April 2011 and December 2015
- 1 serious injury

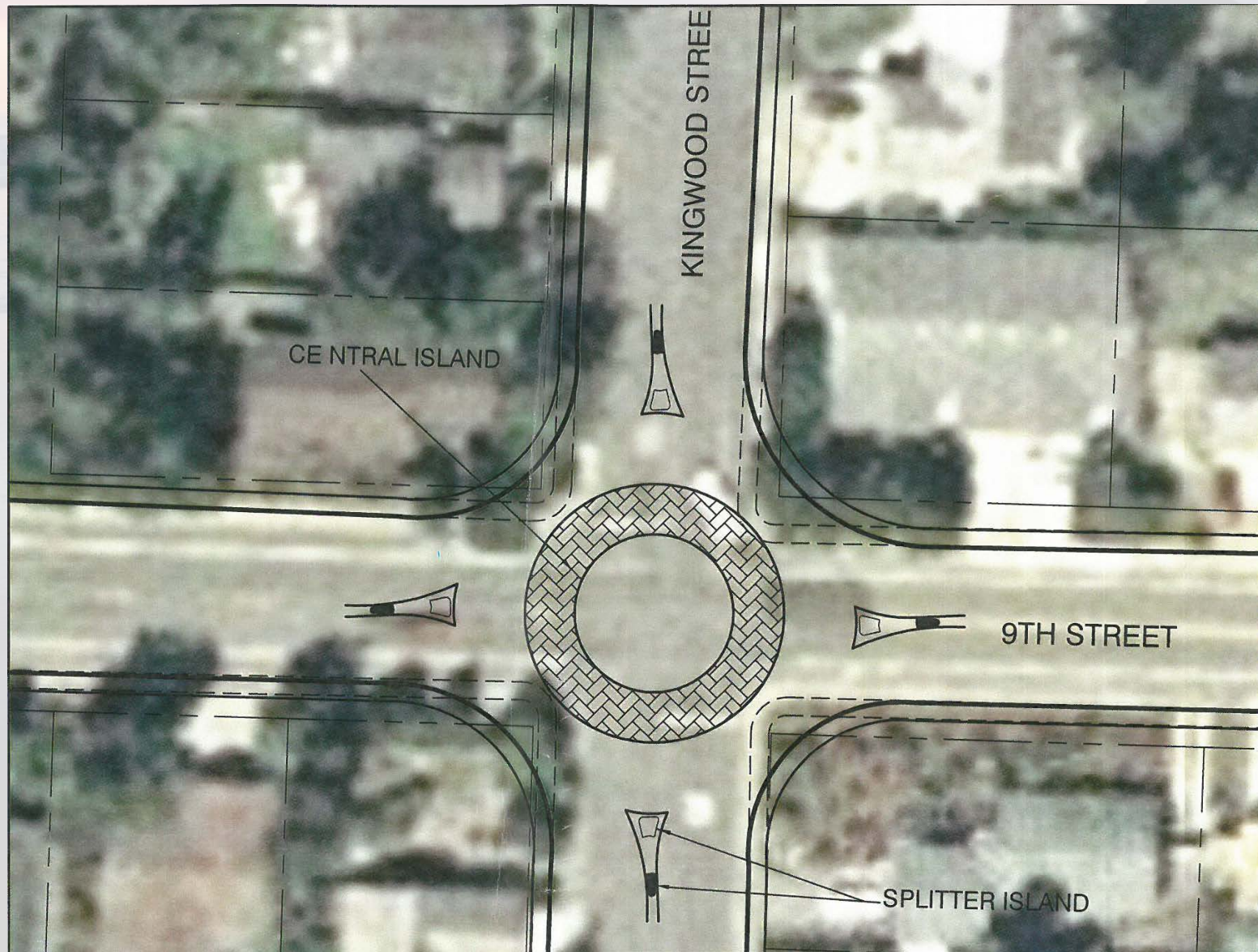


Systemic – Kingwood Street

- 25 accidents between January 2011 and December 2015
- 1 serious injury



Circular traffic safety concept



Questions and Comments



City of Florence
A City in Motion



City of Florence Police Department

Citizen Response to a Violent Intruder

Alert **L**ockdown **I**nform **C**ounter **E**vacuate

Florence, Oregon

Moving Beyond Lockdown...

Alert **L**ockdown **I**nform **C**ounter **E**vacuate

Why is Citizen Preparation in Proactive Response Necessary?

- 25 years of *mass shooting* events have yielded a national average for the response time of Law Enforcement to an Active Killer scene.
- How long:

5-6 Minutes

A.L.I.C.E.

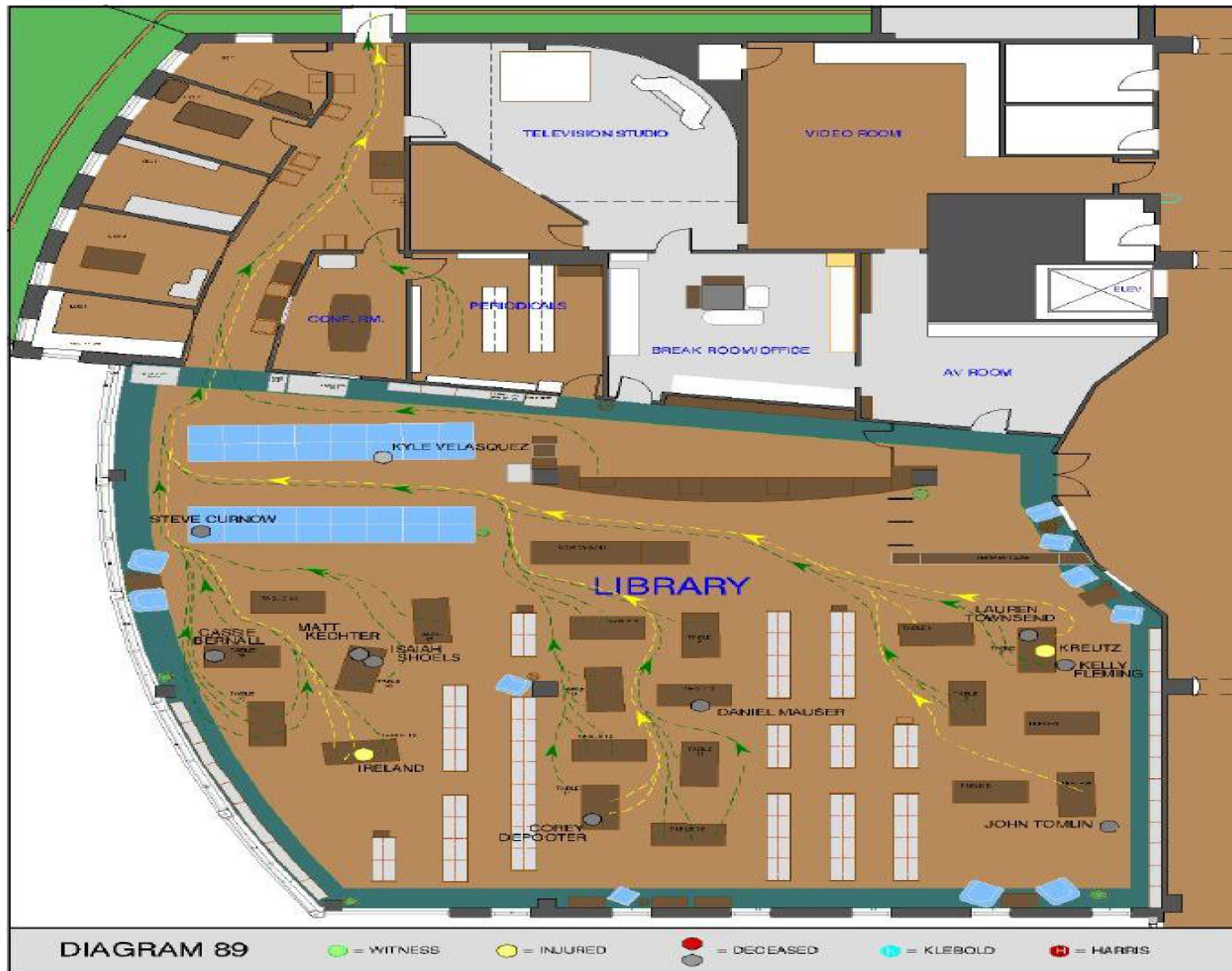
*This could be anyone, anywhere.
Are you prepared or watching?*



14 Years of Passive Response Strategies

	Columbine Library 1999	Virginia Tech 2007	Sandy Hook 2013
Number of Bad Guys	2	1	1
Minutes of Shooting	8.5	8	5
Numbers Present	56	Approx. 100	Approx. 50
Age of Victims	Minors	Adults	Minors and Adults
Casualty Percentage	About 50%	About 50%	About 50%
Number Wounded	12	17	2
Number Killed	10	30	26

Why did 54 students STAY for 5 minutes?



The Lesson from Virginia Tech:

<p>Room 210 No Class</p>	<p><i>STAYED DOWN</i></p> <p>Room 206 - 14 Present Killed - 10 Wounded - 2</p>	<p><i>JUMPED & BARRICADED</i></p> <p>Room 204 - 19 Present Killed - 2 Wounded - 3</p>	<p>Room 200 No Class</p>
<p>Hallway - Killed 1</p>			
<p>Offices</p>	<p><i>STAYED DOWN</i></p> <p>Room 211 - 19 Present Killed - 12 Wounded - 6</p>	<p><i>BARRICADED AFTER 1ST TIME</i></p> <p>Room 207 - 13 Present Killed - 5 Wounded - 6</p>	<p><i>BARRICADED</i></p> <p>Room 205 - 12 Present Killed - 0 Wounded - 0</p>

The Lesson from Virginia Tech:

28 vs. 2 (Fatalities)

Passive vs. Proactive

Wounded - 6

Wounded - 6

Wounded - 0

A.L.I.C.E.

Common Sense, just not Common Knowledge

Alert
Lockdown
Inform
Counter
Evacuate

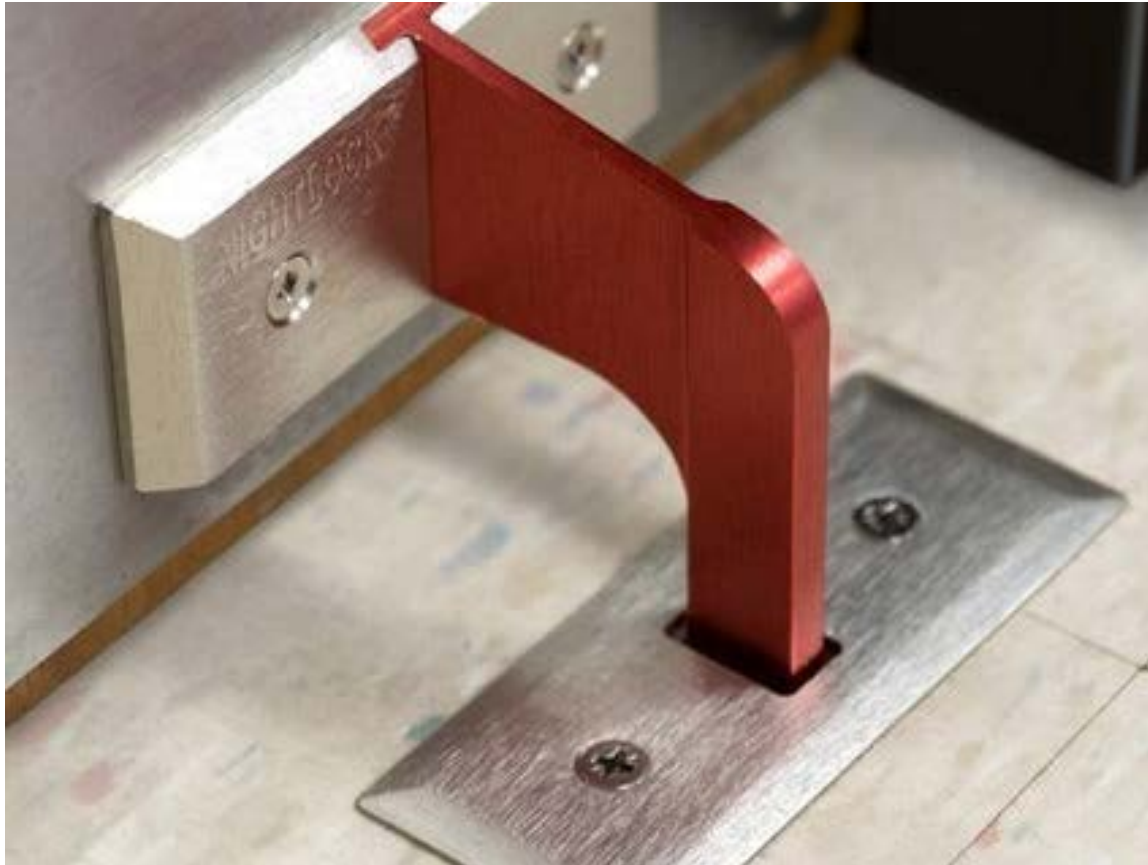
ALICE is ***NOT*** a linear, progressive response.

Lockdown

- Excellent starting point
- When should doors be locked?
- Before, During, or After?
- Locked doors provide a time barrier. Locks can, and have been defeated.
- ***BARRICADE:*** *The idea is to create a stronghold that nobody can breach... BE A HARDER TARGET!*
- Once Lockdown is in effect no one should be allowed into a secure room under any circumstances. Only open your locked door for uniformed police personnel.

Which is a more effective barricade for a door opening out?

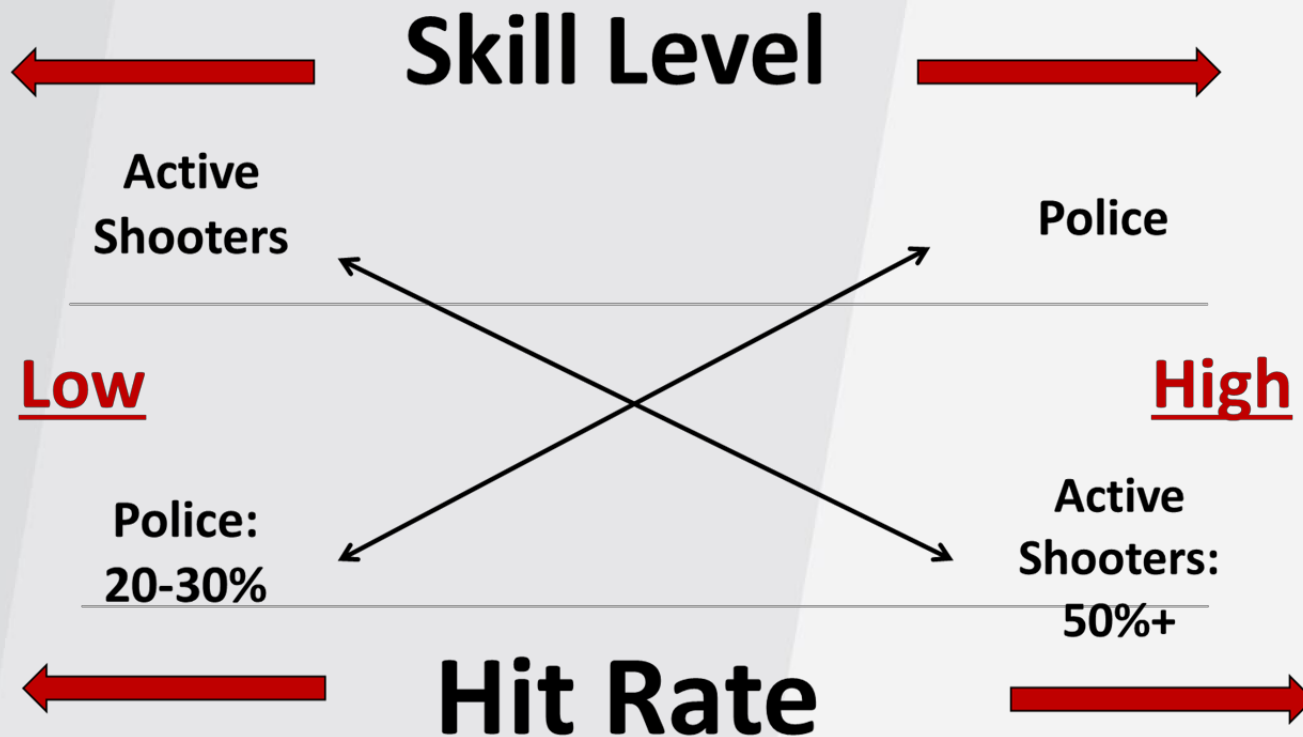




Night Lock, door security device

Counter

- Is it possible to interrupt the skill set needed to shoot accurately?



Evacuate

- Only 2% of Violent Intruder events have been by more than one person.
- If he is inside, you get outside.
- Cannot use car to evacuate
- Reunification points established

A.L.I.C.E.

**When faced with Danger,
You Must DO Something.**

"In a moment of decision, the best thing you can do is the right thing. The next best thing is the wrong thing. The worst thing you can do is nothing."

- Theodore Roosevelt

Why should “they” act?

Attack Resolution

The NYPD organized attack resolutions in the active shooter data set into four categories: applied force, no applied force, suicide or attempted suicide, and attacker fled.

Table 2 shows that the vast majority of attacks in the active shooter data set ended violently, either by force applied by law enforcement, private security, bystanders, or the attackers themselves. Only 14% ended without applied force, such as by a negotiated surrender.

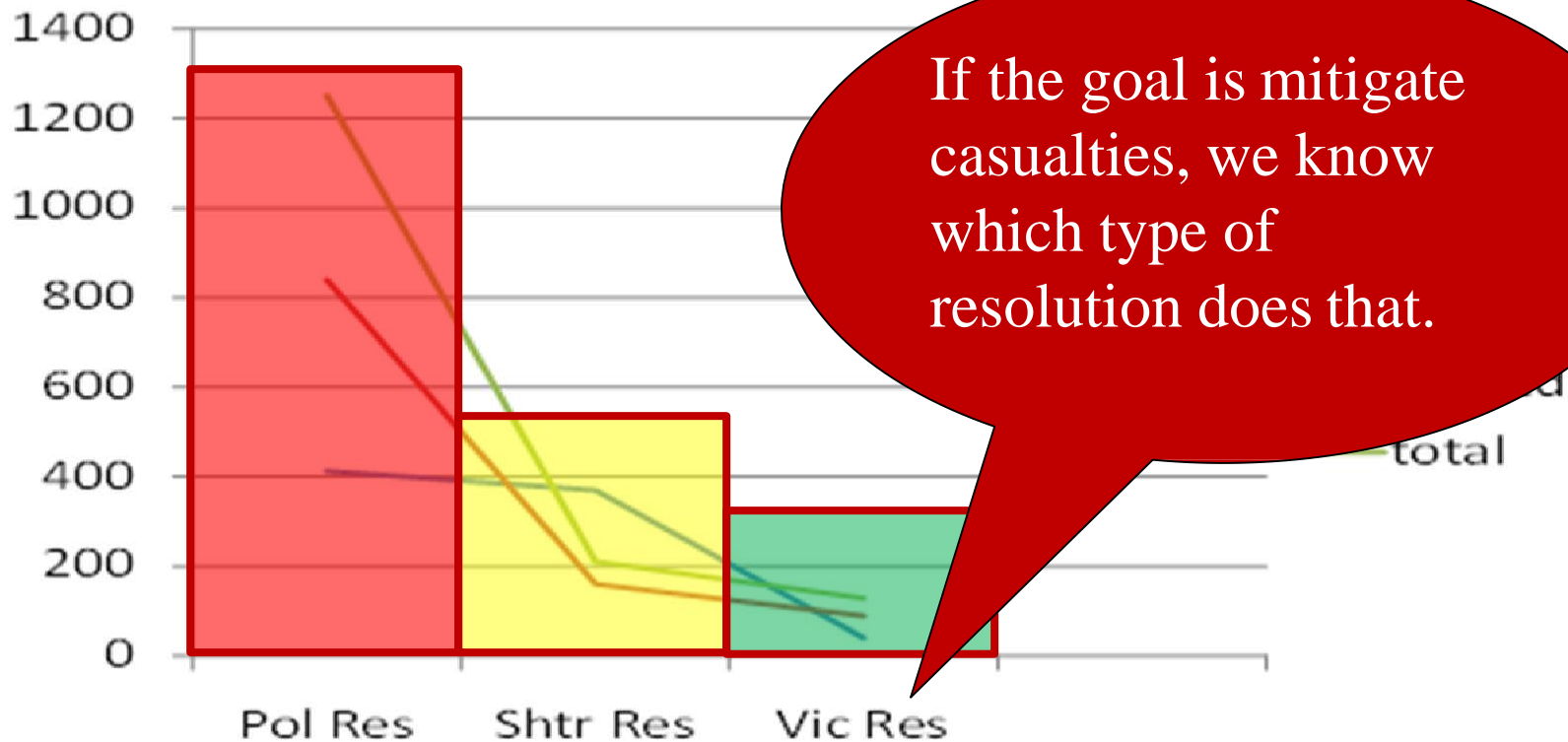
Table 2: Number of Incidents by Incident Resolution

Resolution	Number of Incidents	Percentage
Applied Force Citizens and Police	93	46%
No Applied Force	28	14%
Suicide/Attempted Suicide Shooter	80	40%
Attacker Fled	1	<1%
Total	202	100%

Source: NYPD, Active Shooter, Recommendations and Analysis for Risk Mitigation. 2011

Casualties by Category Since 1966

Note: Graph includes Beslan casualties



Courtesy of Bill Barchers, www.hardtactics.com

There is now a movement towards Proactive Response at official levels:



ACTIVE SHOOTER HOW TO RESPOND



October 2008

DHS Recommendations

- October 2008
- Known as the 3-Outs Program
 - Get Out
 - Hide Out
 - Take Out

ALICE
TRAINING INSTITUTE

IACP Recommendations

- October 2009
- Do not have a one-size fits all plan.
- Teachers choose to Evacuate or Lockdown
- Authorize decisions to be made
- Active Resistance is an option



Guide for Preventing and
Responding to School Violence 2nd Edition



US Dept. of Ed REMS

Recommendations

- June 2013
- Has to be the end of LOCKDOWN only as the response plan for schools.

Are your plans in agreement with these recommendations, or contrary?

ALICE has led this movement since 2001.

GUIDE FOR DEVELOPING
HIGH-QUALITY
SCHOOL EMERGENCY
OPERATIONS PLANS



FEMA



Florence Events Center Staff & Volunteers



Shoreline Christian School



Siuslaw School District Staff



Photo courtesy of
Siuslaw News