

SHORE PINES HOUSING PROJECT
 T&L LOT 200 PARCEL 101
 FLORENCE, OR 97433
 NORTHWEST HOUSING ALTERNATIVES, INC
 1600 NE 10TH AVENUE
 PORTLAND, OR 97232
 WWW.NORTHWESTHOUSING.COM

D.A.O. ARCHITECTS, LLC
 3435 SW 4TH AVENUE, SUITE 310
 PORTLAND, OR 97204
 503.338.3890
 WWW.DAORCHITECTS.COM

MAZZETTI ENGINEERING
 1000 NE 10TH AVENUE
 PORTLAND, OR 97232
 503.281.1111
 WWW.MAZZETTIENGINEERING.COM

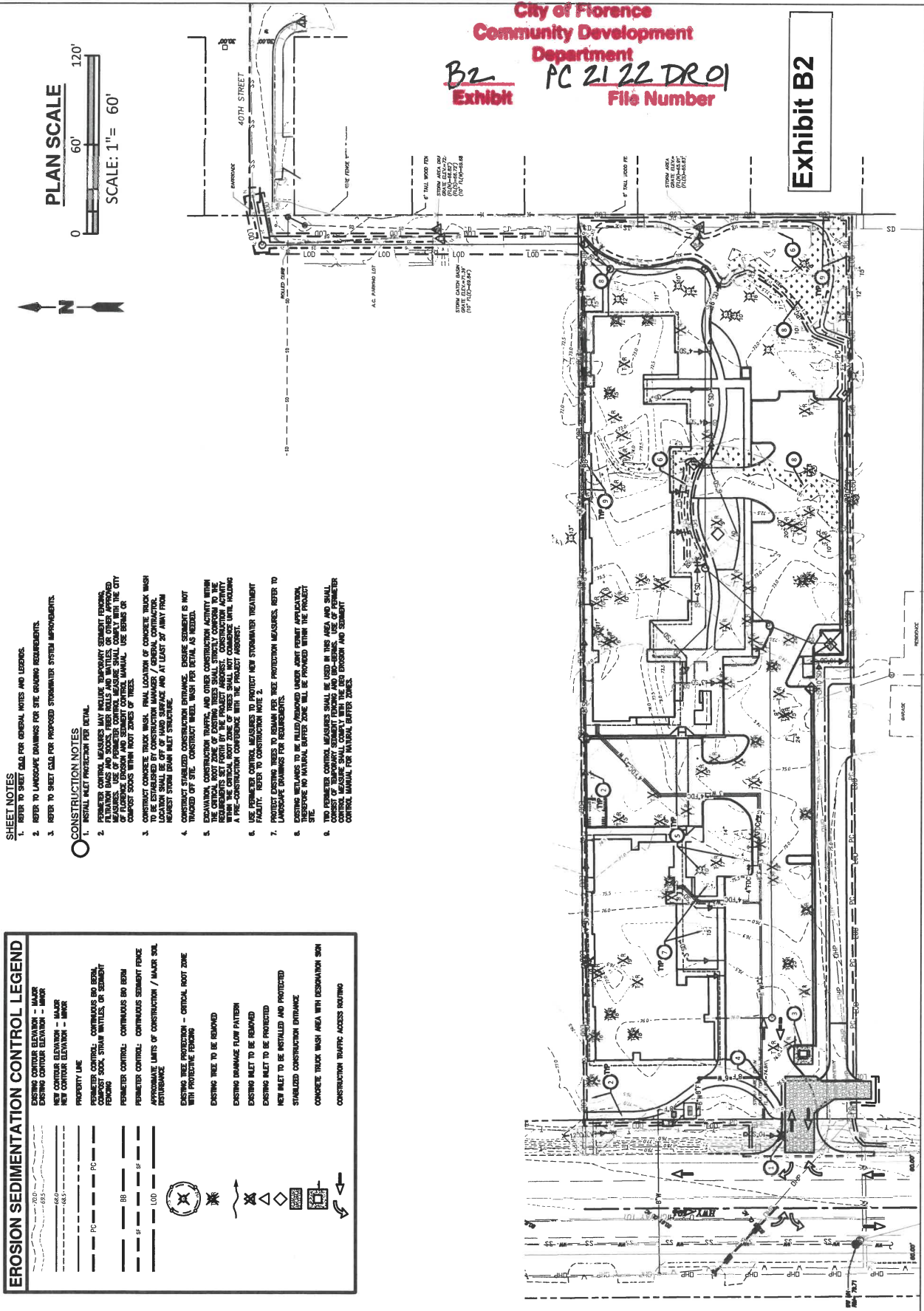
REVIEW SET
 THIS DRAWING IS PRELIMINARY AND INCOMPLETE. NO CONSTRUCTION OR ESTIMATING OR 08-12-21

LAND USE REVIEW UPDATE
 2005
 08/12/2021
 1"= 30'-0"
CONSTRUCTION PERIOD EROSION AND SEDIMENT CONTROL PLAN

C1.1

APPROVED
City of Florence
Community Development
Department
B2 Exhibit
PC 2122 DRO1
File Number

Exhibit B2



- SHEET NOTES**
- REFER TO SHEET C&L FOR GENERAL NOTES AND LEGENDS.
 - REFER TO LANDSCAPE DRAWINGS FOR SITE GRADING REQUIREMENTS.
 - REFER TO SHEET C&M FOR PROPOSED STORMWATER SYSTEM IMPROVEMENTS.
- CONSTRUCTION NOTES**
- INSTALL INLET PROTECTION PER DETAIL.
 - PERIMETER CONTROL MEASURES MAY INCLUDE TEMPORARY SEDIMENT FENCING, STRAW BARRIERS, SODS, STRAW MATS, TREE BOLLIS, OR OTHER APPROVED EROSION CONTROL MEASURES. REFER TO THE CITY OF FLORENCE EROSION AND SEDIMENT CONTROL MANUAL. USE BERM OR COMPOST SOCS WITH ROOT ZONES OF TREES.
 - CONSTRUCT CONCRETE TRUCK WASH. FINAL LOCATION OF CONCRETE TRUCK WASH TO BE DETERMINED BY THE CONTRACTOR. CONCRETE TRUCK WASH LOCATIONS SHALL BE 50' OF HARD SURFACE AND AT LEAST 20' AWAY FROM NEAREST STORM DRAIN INLET STRUCTURE.
 - CONSTRUCT STABILIZED CONSTRUCTION ENTRANCE. ENSURE SEDIMENT IS NOT TRACKED OFF SITE. CONSTRUCT WHEEL WASH PER DETAIL AS NEEDED.
 - EXCAVATION, CONSTRUCTION TRAFFIC, AND OTHER CONSTRUCTION ACTIVITY WITHIN THE CRITICAL ROOT ZONE OF EXISTING TREES SHALL STRICTLY CONFORM TO THE CITY OF FLORENCE TREE PROTECTION MANUAL. ALL TREE PROTECTION MEASURES WITHIN THE CRITICAL ROOT ZONE OF TREES SHALL NOT COMMENCE UNTIL HOLDING A PRE-CONSTRUCTION CONFERENCE WITH THE PROJECT ARCHITECT.
 - USE PERIMETER CONTROL MEASURES TO PROTECT NEW STORMWATER TREATMENT FACILITY. REFER TO CONSTRUCTION NOTE 2.
 - PROTECT EXISTING TREES TO REMAIN PER TREE PROTECTION MEASURES. REFER TO LANDSCAPE DRAWINGS FOR REQUIREMENTS.
 - EXISTING TREES TO BE RELOCATED UNDER SHORT PERMIT APPLICATION. ALL RELOCATIONS TO REMAIN WITHIN BUFFER ZONE SHALL BE PROPOSED WITH THE PROJECT ARCHITECT.
 - TWO PERIMETER CONTROL MEASURES SHALL BE USED IN THIS AREA AND SHALL CONSIST OF TEMPORARY SEDIMENT FENCING AND STRAW BARRIERS. USE OF PERIMETER CONTROL MEASURES SHALL BE USED IN THIS AREA AND SHALL CONFORM TO THE CITY OF FLORENCE EROSION AND SEDIMENT CONTROL MANUAL FOR NATIONAL BUFFER ZONES.

EROSION SEDIMENTATION CONTROL LEGEND

	EXISTING CONTOUR ELEVATION - MAJOR
	EXISTING CONTOUR ELEVATION - MINOR
	NEW CONTOUR ELEVATION - MAJOR
	NEW CONTOUR ELEVATION - MINOR
	PROPERTY LINE
	PERIMETER CONTROL - CONTINUOUS 800 BERM
	PERIMETER CONTROL - CONTINUOUS SEDIMENT FENCE
	APPROXIMATE LIMITS OF CONSTRUCTION / MAJOR SOIL DISTURBANCE
	EXISTING TREE PROTECTION - CRITICAL ROOT ZONE WITH PROTECTIVE FENCING
	EXISTING TREE TO BE REMOVED
	EXISTING DRAINAGE FLOW PATTERN
	EXISTING INLET TO BE REMOVED
	EXISTING INLET TO BE PROTECTED
	NEW INLET TO BE INSTALLED AND PROTECTED
	STABILIZED CONSTRUCTION ENTRANCE
	CONCRETE TRUCK WASH AREA WITH DESIGNATION SIGN
	CONSTRUCTION TRAFFIC ACCESS ROUTING