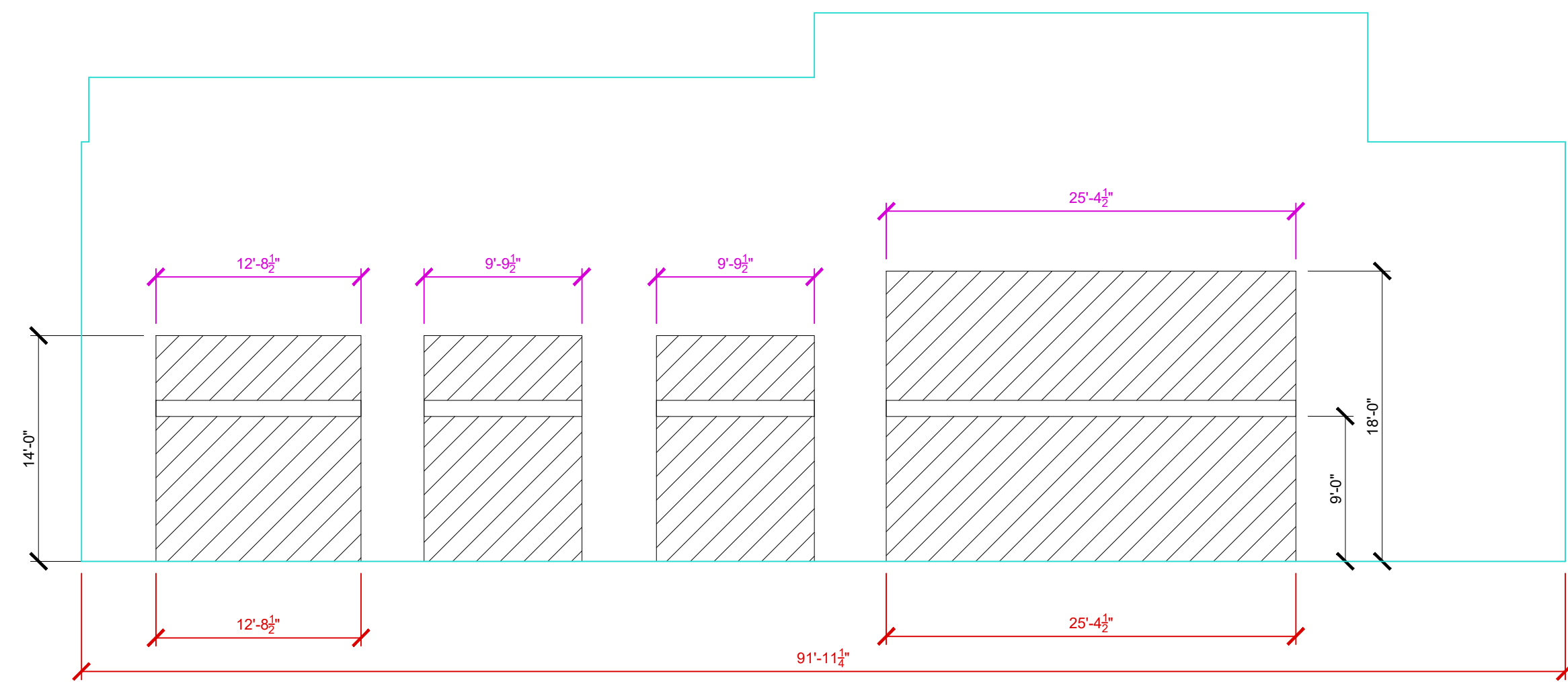
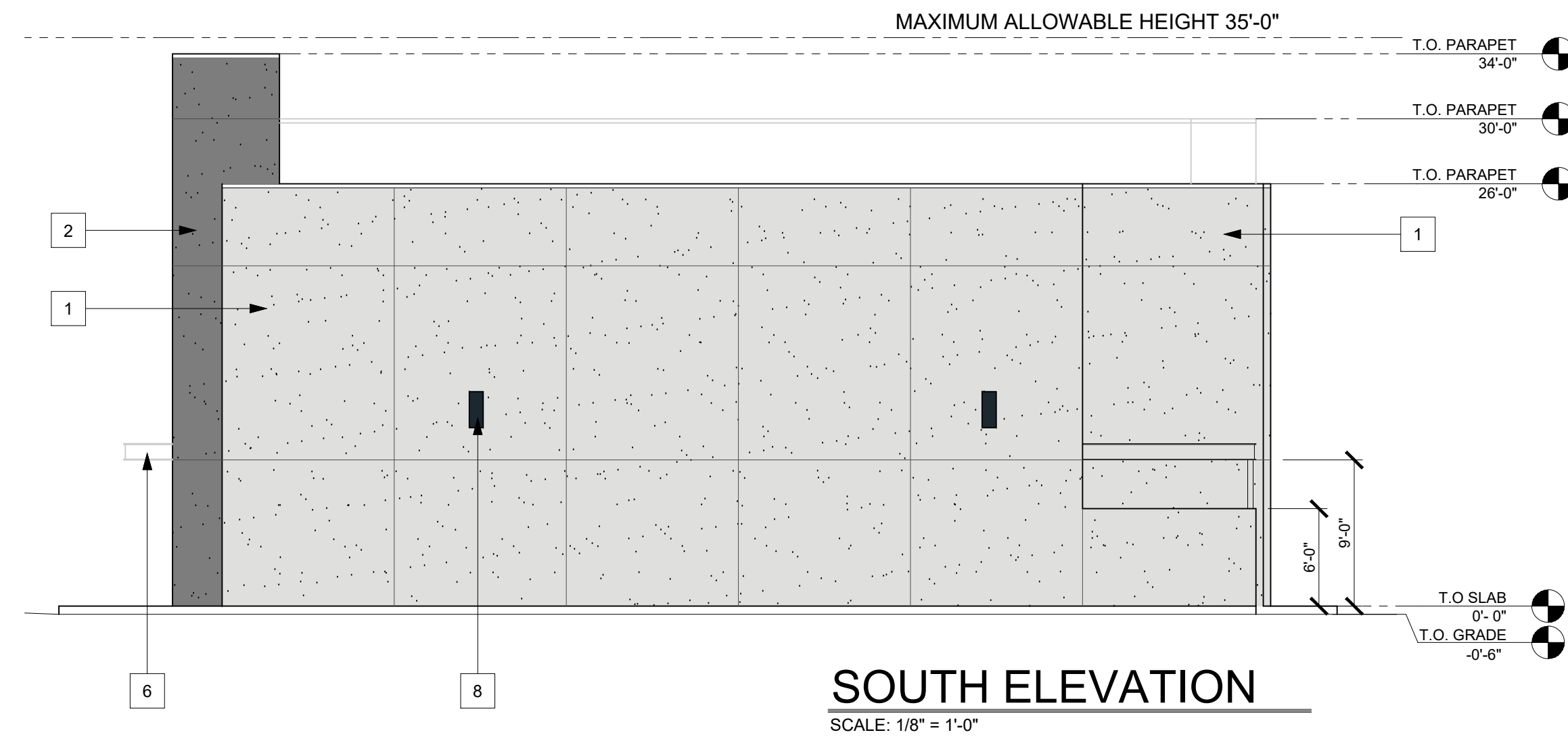




KEY NOTES/COLORS	
1	= STUCCO COLOR: SW 7064, "PASSIVE"
2	= STUCCO COLOR: SW 7067, "CITYSCAPE"
3	= METAL SIDING COLOR: SW 6508, "SECURE BLUE"
4	= BRICK VENEER - BELDEN 2 1/4" x 11 1/2" COLOR: "TITANIUM VELOUR"
5	= STOREFRONT WINDOWS FRAME COLOR: DARK BRONZE
6	= METAL AWNING COLOR: SW 7069, "IRON ORE"
7	= TRASH ENCLOSURE GATE OPAQUE
8	= EXTERIOR METAL DOOR AND FRAME COLOR: DARK BRONZE
9	= WALL LIGHTING COLOR: BLACK
10	= TENANT SIGNAGE (EXAMPLE ONLY)
11	= DRIVE-UP TENANT SIGNAGE



WEST ELEVATION AREA:
TOTAL AREA = 2858 sf
(Street Frontage)

WINDOW AREA:
TOTAL AREA = 851 sf
30% (Face of Elevation)

AWNINGS:
TOTAL LENGTH = 47'-9"
51.9% (Face of Elevation)

COVERED ENTRY:
TOTAL LENGTH = 38'-0"
42% (Face of Elevation)

