

MICROTEL INN AND SUITES - BY WYNDHAM



750 QUINCE ST
FLORENCE, OR 97439

LAND USE SUBMITTAL

NOT FOR CONSTRUCTION

11/15/2024

21-098

ACCESSIBLE ROOM NOTES:

TOTAL NUMBER OF ROOMS	ACCESSIBLE ROOMS W/O ROLL-IN SHWR REQUIRED	ACCESSIBLE ROOMS W/ ROLL-IN SHOWER REQUIRED	TOTAL ACCESSIBLE ROOMS REQUIRED	HEARING IMPAIRED ROOMS REQUIRED
1 TO 25	1	0	1	2
26 TO 50	2	0	2	4
51 TO 75	4	1	4	7
76 TO 100	5	1	5	9
101 TO 150	7	4	7	12

NOTE, ACCESSIBLE ROOMS MUST BE DISPERSED AMONG THE VARIOUS ROOM TYPES; I.E. SINGLES, DOUBLES AND SUITES

GUESTROOM MATRIX & FLOOR AREA

	SINGLE KING	SINGLE KING WIDE	SINGLE KING ADA	QUEEN / QUEEN	QUEEN / QUEEN WIDE	LARGE / QUEEN CORNER	QUEEN / QUEEN CORNER WIDE	QUEEN / QUEEN ADA	KING SUITE	KING SUITE ADA	TOTAL	FLOOR AREA
FIRST FLOOR	1	-	1	9	-	-	-	-	-	-	11	9,314 SF
SECOND FLOOR	3	1	1	14	1	1	-	1	3	-	25	9,314 SF
THIRD FLOOR	3	1	-	14	1	1	1	-	3	1	25	9,314 SF
FOURTH FLOOR	3	1	-	14	1	1	1	-	3	1	25	9,314 SF
TOTAL	10	3	2	51	3	3	2	1	9	2	86	37,256 SF

OWNER / DEVELOPER

BRAUN DEVELOPMENT
PO BOX 13223
PORTLAND, OR 97213
P: 503.887.4538

ARCHITECT

WOODBLOCK ARCHITECTURE
827 SW 2ND AVE #300,
PORTLAND, OR 97204
P: 503.889.0604

STRUCTURAL ENGINEER

SFA DESIGN GROUP
12112 SW GARDEN PL
TIGARD, OR 97223
P: 503.641.8311

MEP ENGINEER

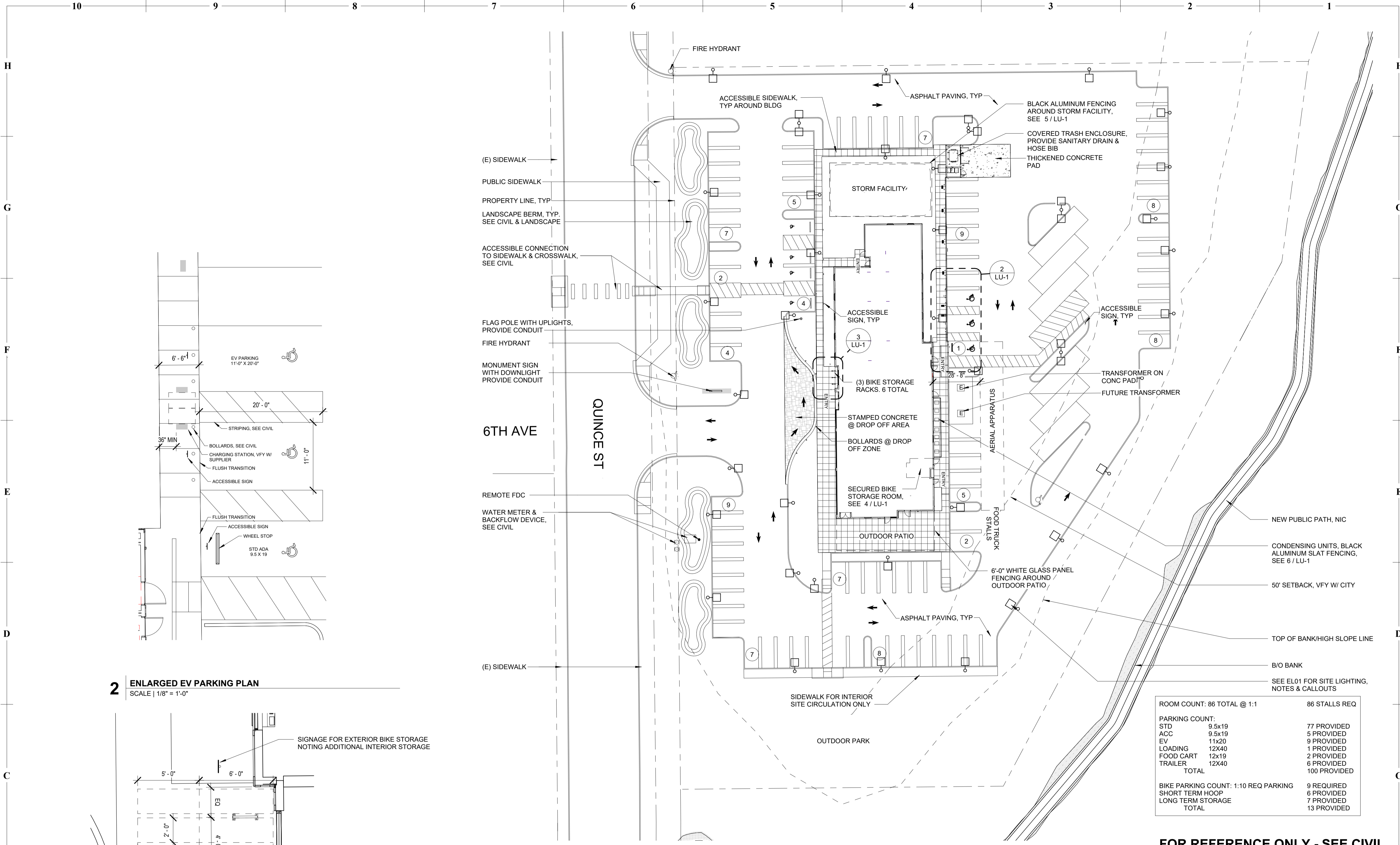
SAZAN GROUP
111 SW 5TH AVE #3210
PORTLAND, OR 97204
P: 503.416.2400

CIVIL ENGINEER

CIVIL WEST ENGINEERING SERVICES
486 EAST ST
COOS BAY, OR 97420
P: 541.266.8601

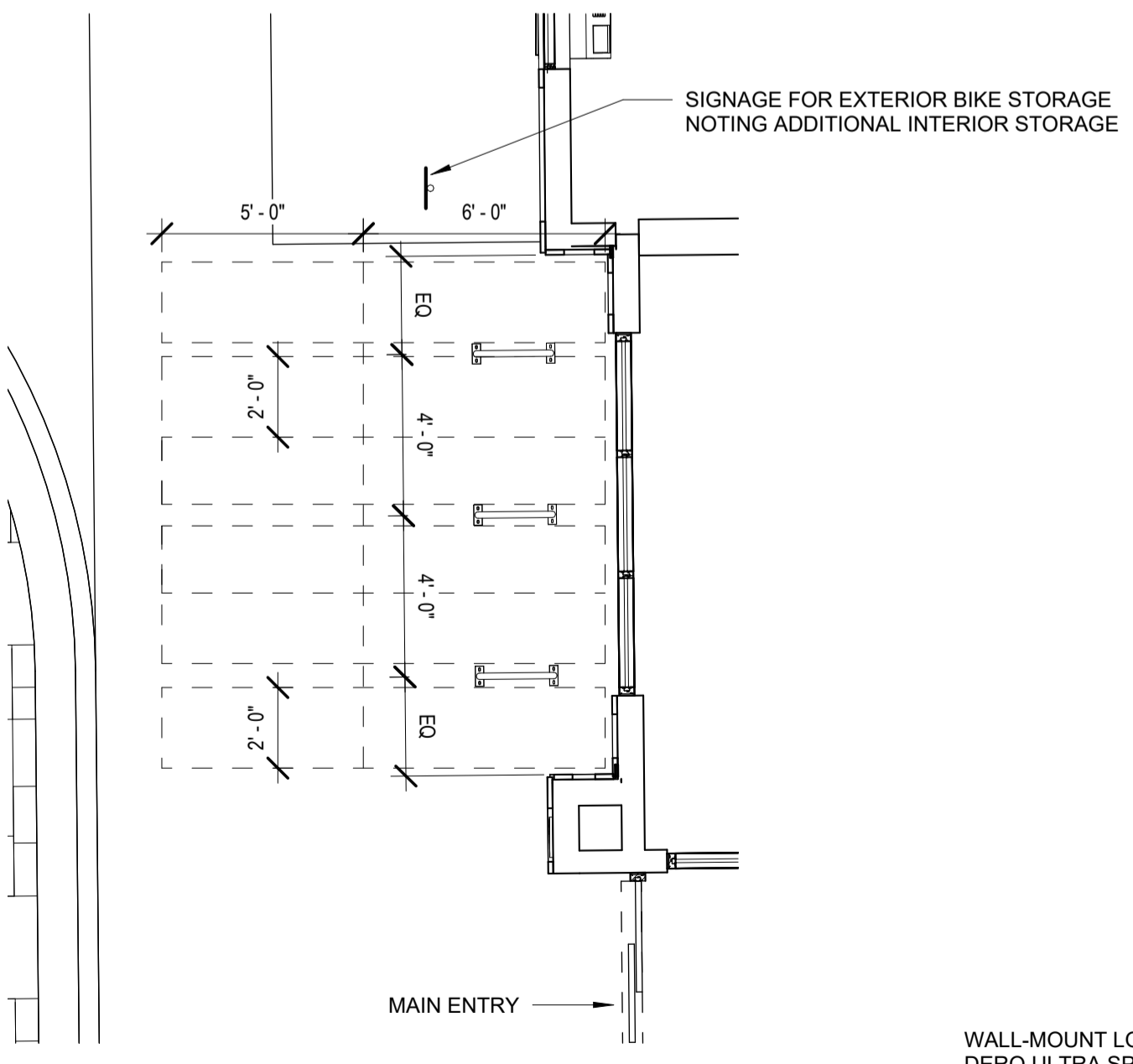
LANDSCAPE ARCHITECT

HGE ARCHITECTS
333 SOUTH 4TH ST
COOS BAY, OR 97420
P: 541.269.1166



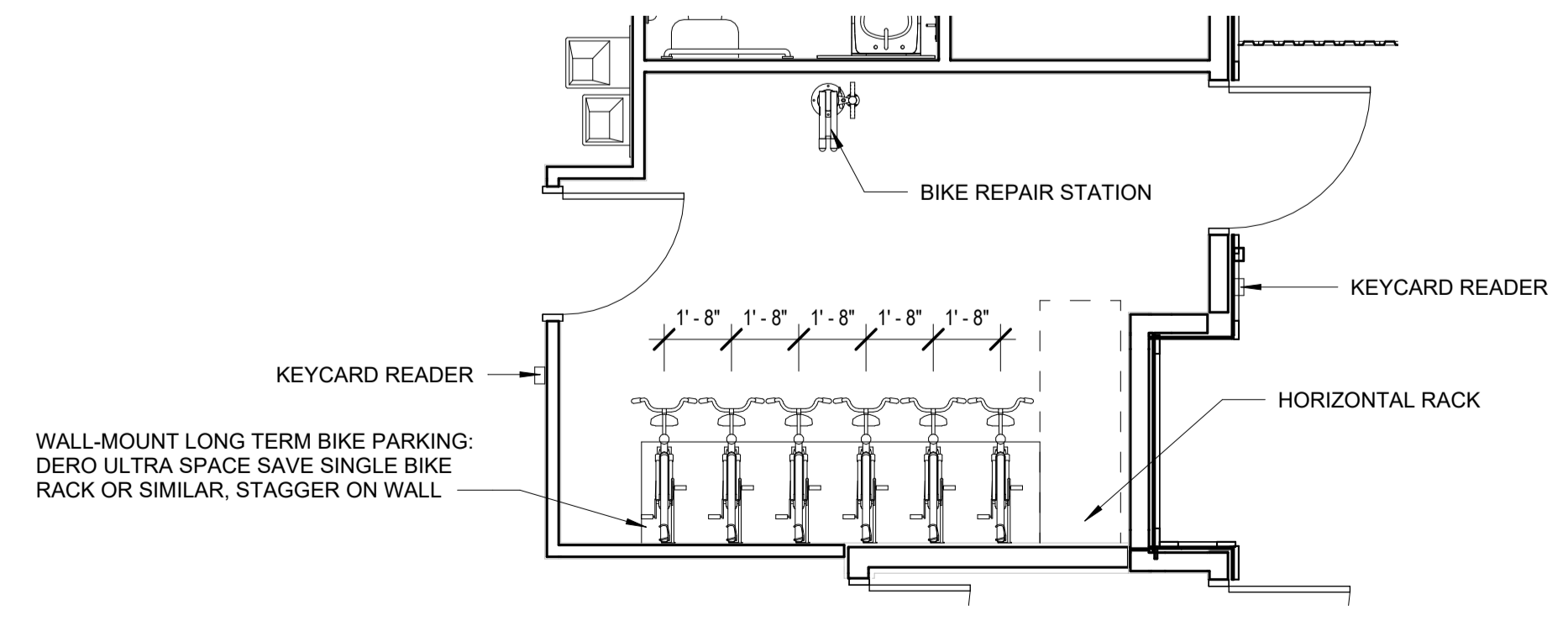
FOR REFERENCE ONLY - SEE CIVIL

2 ENLARGED EV PARKING PLAN
 SCALE | 1/8" = 1'-0"

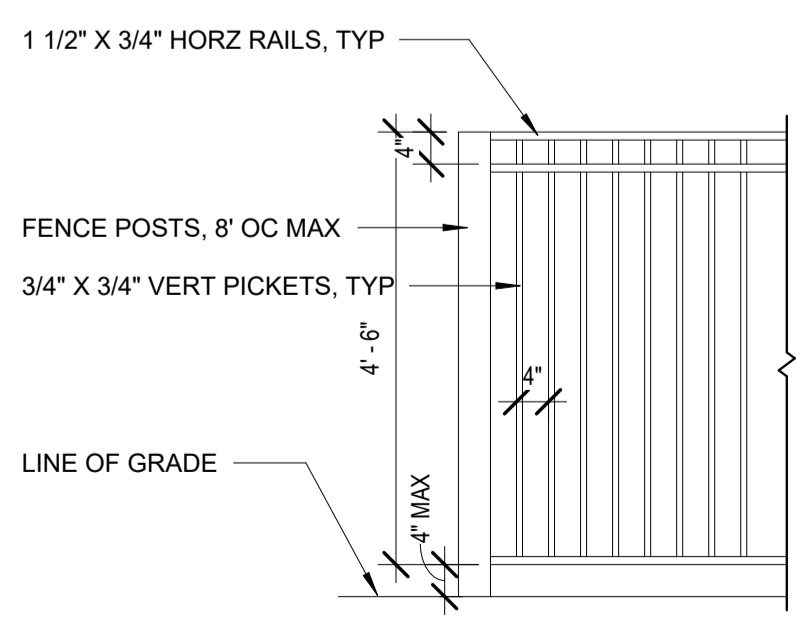


3 SHORT TERM BIKE PLAN
 SCALE | 1/4" = 1'-0"

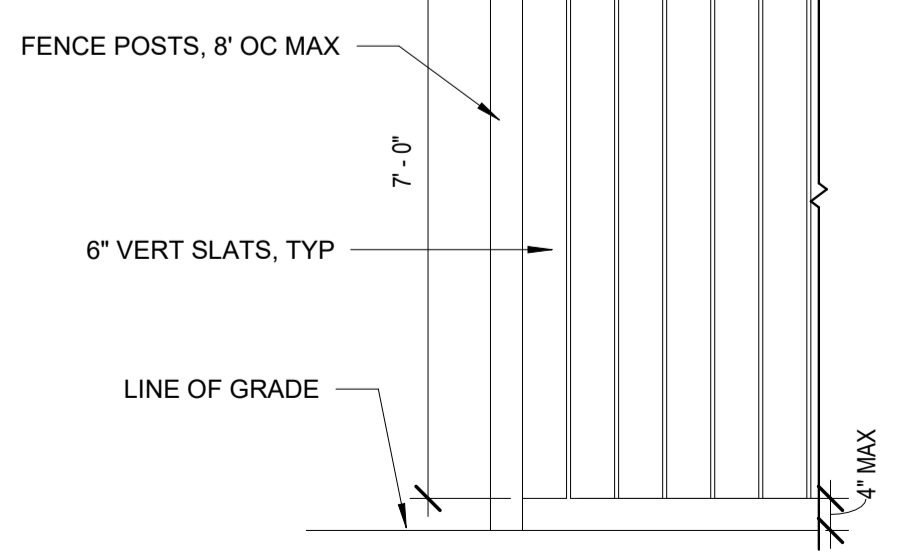
1 ARCHITECTURAL SITE PLAN
 SCALE | 1" = 30'-0"



4 ENLARGED LONG TERM BIKE PARKING
 SCALE | 1/4" = 1'-0"



5 SECURITY FENCE DETAIL
 SCALE | 1/2" = 1'-0"



6 MECH SCREEN DETAIL
 SCALE | 1/2" = 1'-0"



#56467

LAND USE SUBMITTAL

MICROTEL INN AND SUITES

750 QUINCE ST
FLORENCE, OR 97439

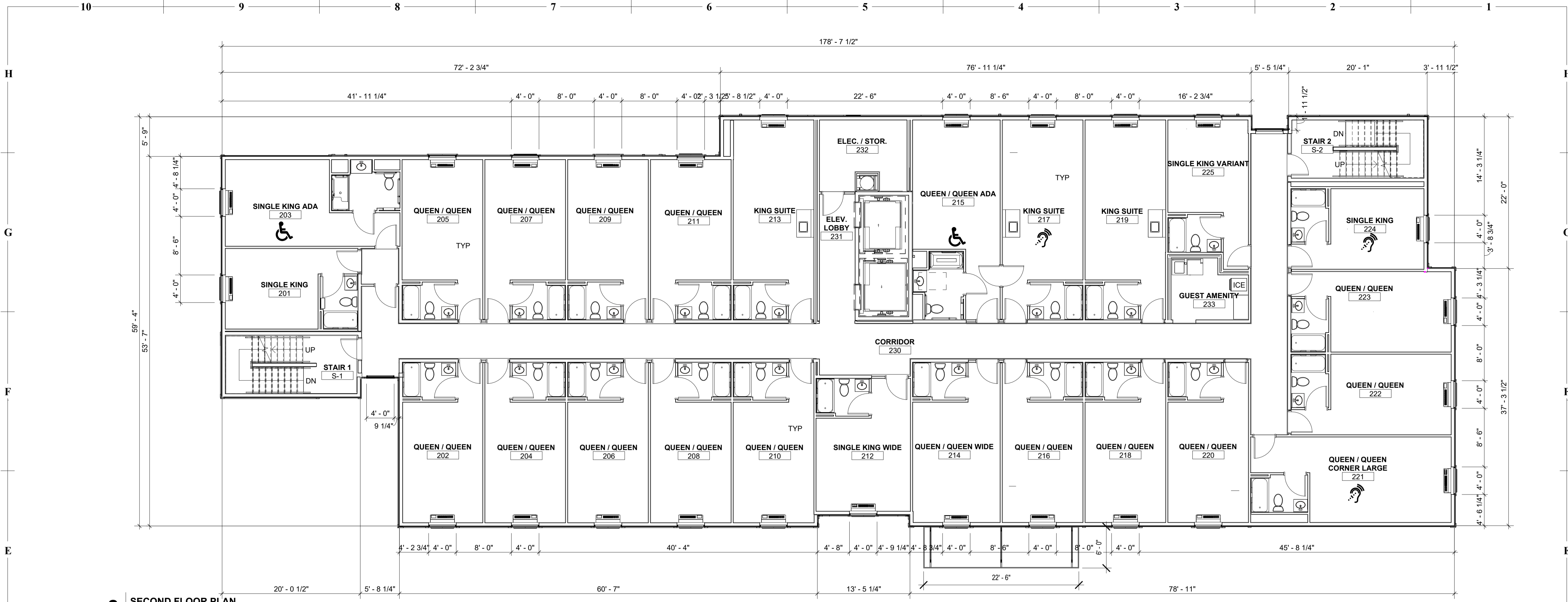
REVISION DATES:

PROFESSIONAL SEAL

LU-2

ISSUE DATE: 11/15/2024
PROJECT NUMBER: 21-098

FIRST FLOOR & SECOND FLOOR PLAN



MICROTEL INN AND SUITES

750 QUINCE ST
FLORENCE, OR 97439

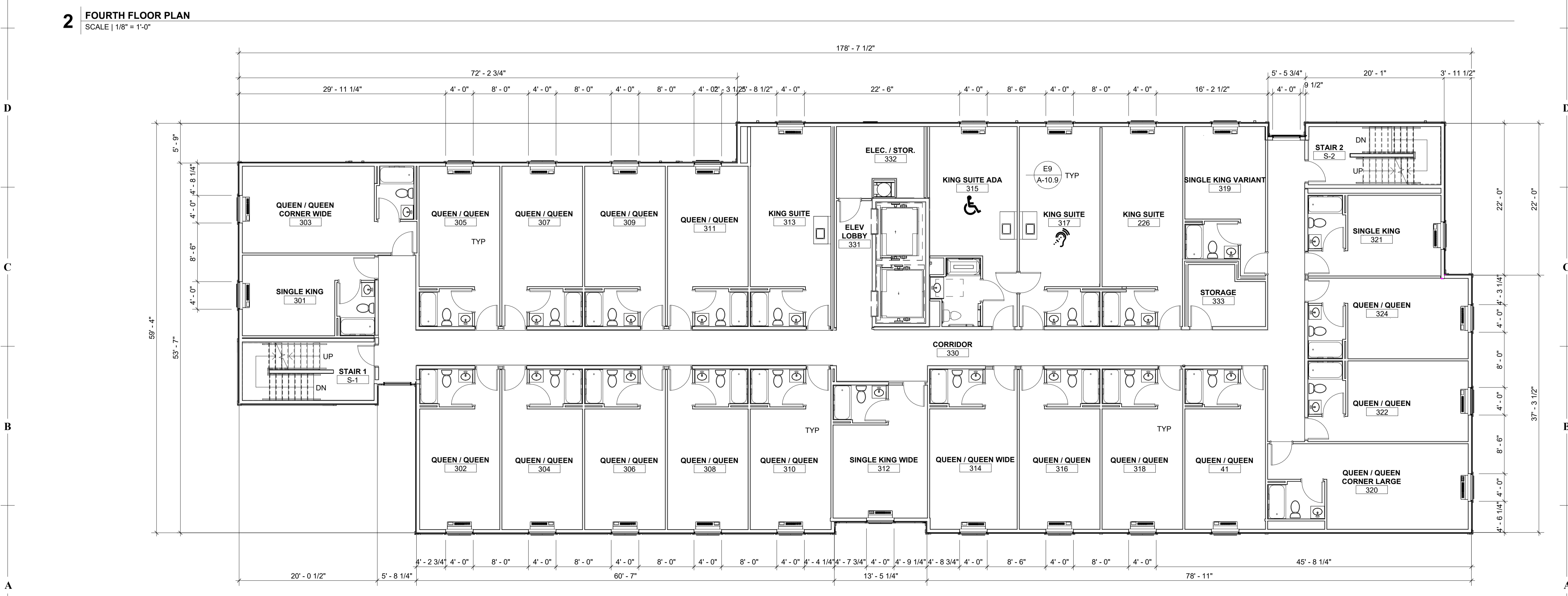
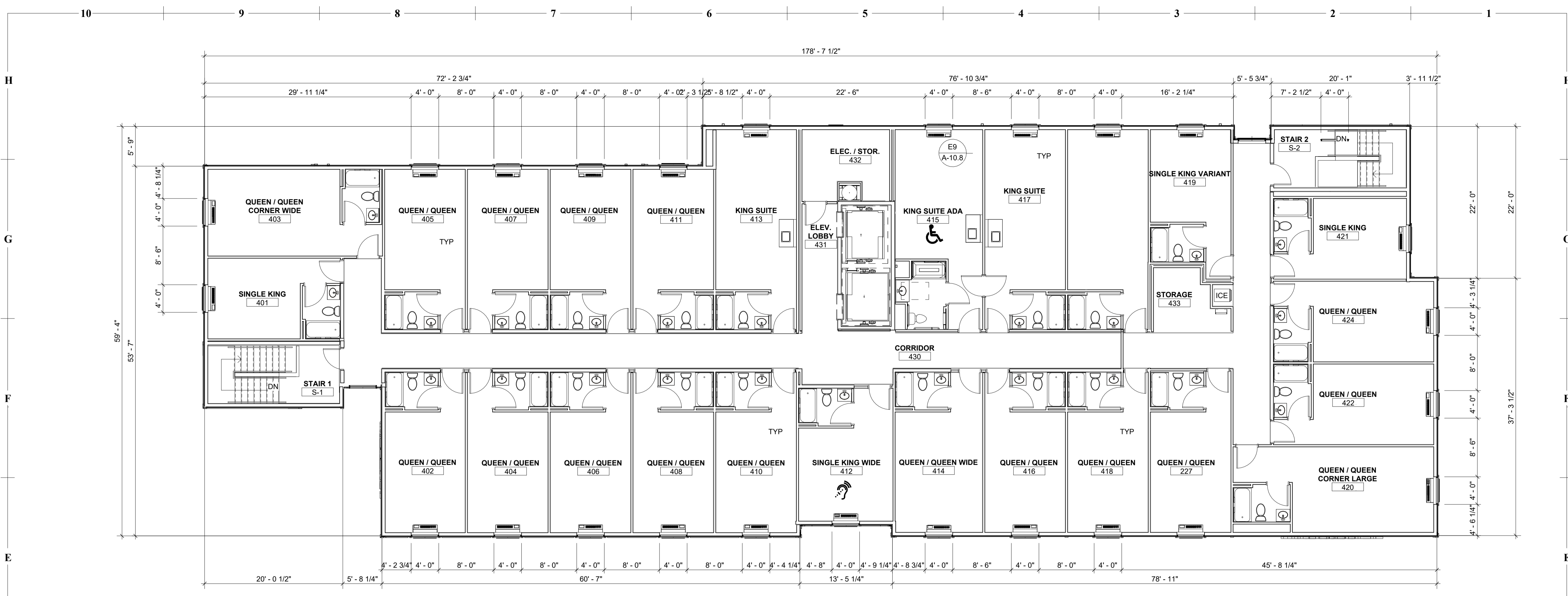
REVISION DATES:

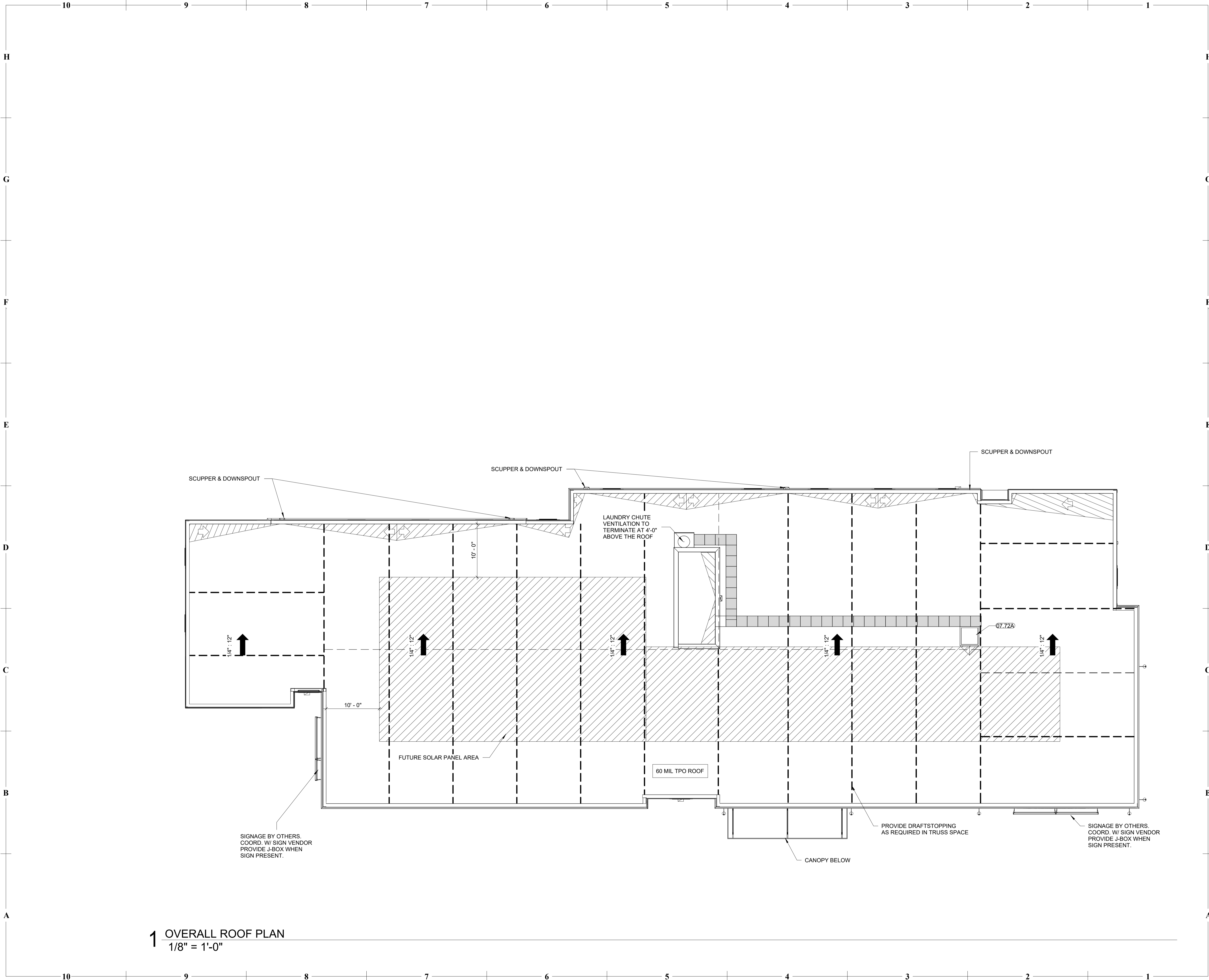
PROFESSIONAL SEAL

LU-3

ISSUE DATE: 11/15/2024
PROJECT NUMBER: 21-098

THIRD FLOOR & FOURTH FLOOR PLANS





1 OVERALL ROOF PLAN
1/8" = 1'-0"

- GENERAL NOTES - ROOF PLANS:**
- RE: SHEET CS2 FOR ADDITIONAL GENERAL NOTES THAT ARE APPLICABLE.
 - DIMENSIONS SHOWN ON THE ROOF PLAN ARE TO THE FACE OF STUD AND COLUMN GRID LINES, UNLESS NOTED OR SHOWN OTHERWISE. DIMENSIONS ARE TO FACE OF STUD UNLESS NOTED OTHERWISE.
 - PROVIDE 1/2" FT. TAPERED INSULATION AT ALL ROOF CURBS AND AT EQUIPMENT WHICH EXCEEDS 18 INCHES IN WIDTH. NOTE: WALL THICKNESSES ARE ACTUAL.

ROOF PLAN LEGEND

- SLOPED STRUCTURE
- TAPERED INSULATION CRICKETING @ 1/4" PER FOOT
- ROOF WALKING PAD
- SCUPPER & DOWNSPOUT

MATERIAL KEYNOTES

07.72A	ROOF HATCH
--------	------------



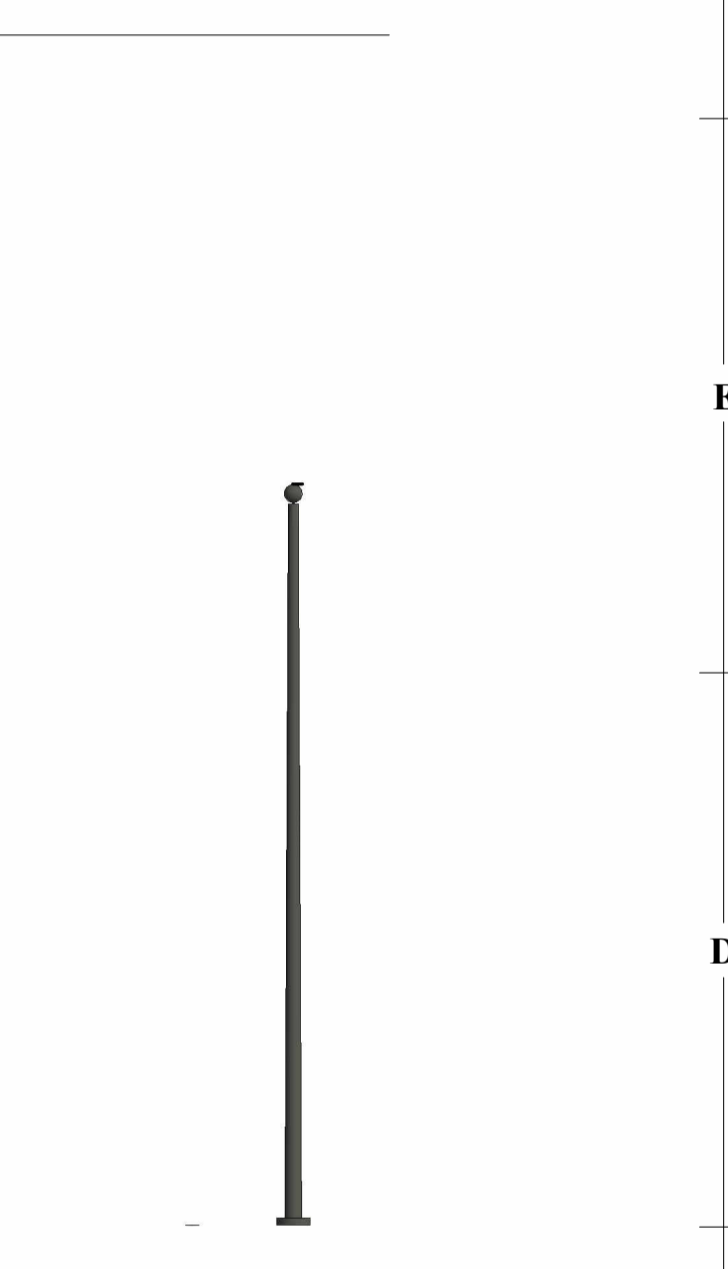
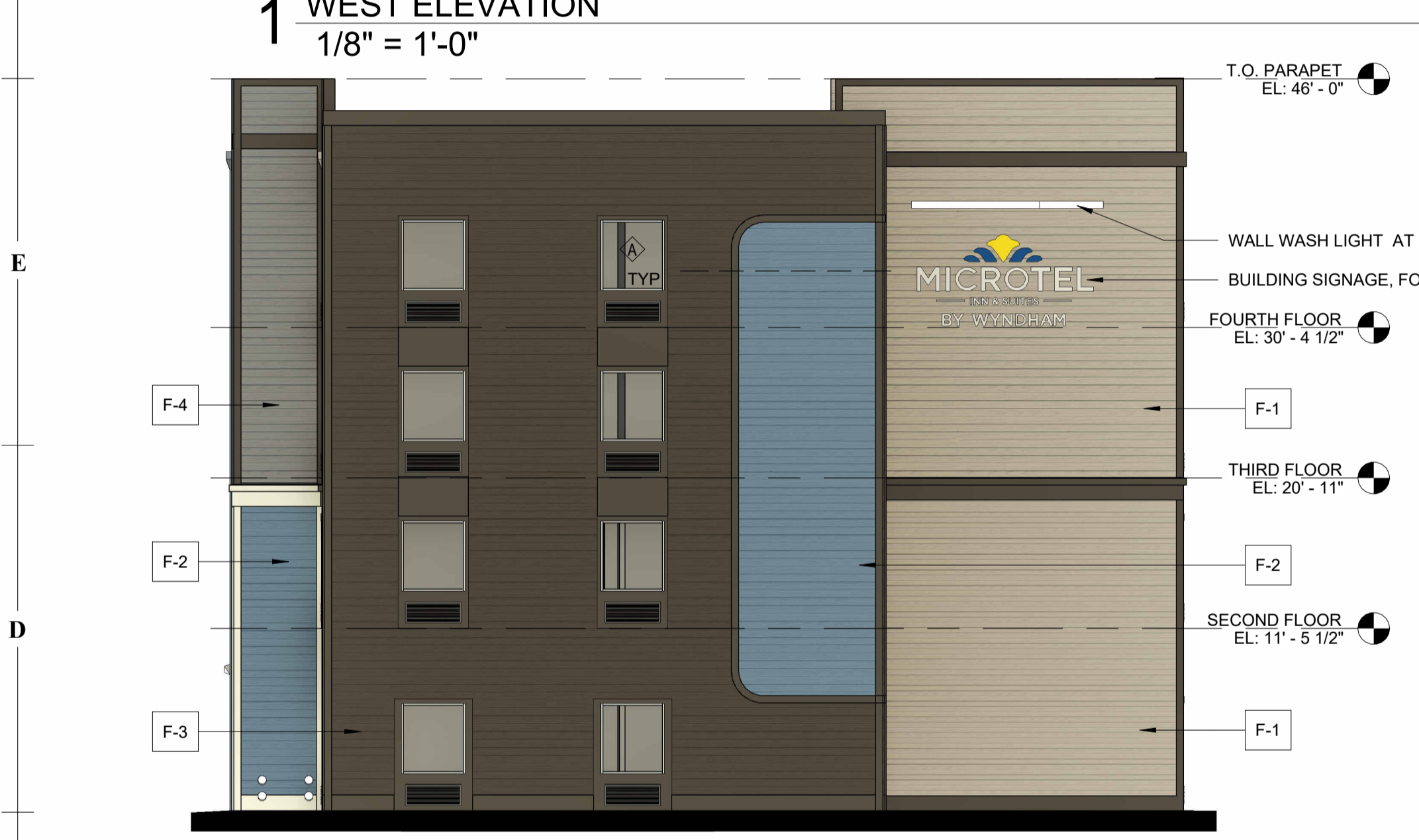
#56467
LAND USE SUBMITTAL

MICROTEL INN AND SUITES
750 QUINCE ST
FLORENCE, OR 97439

REVISION DATES:

PROFESSIONAL SEAL
LU-4
ISSUE DATE: 11/15/2024
PROJECT NUMBER: 21-098

ROOF PLAN



EXTERIOR ELEVATION COLORS

	F-1: WOOD LOOK SIDING - COLOR TO MATCH #131 - GULL GRAY DRYVIT #MICR-01-1022-ST
	F-2: WOOD LOOK SIDING - COLOR TO MATCH #577A - BLUEBELL DRYVIT #MICR-02-1022-ST
	F-3: WOOD LOOK SIDING - COLOR TO MATCH #528 CITATION DRYVIT #MICR-03-1022-ST
	F-4: WOOD LOOK SIDING - COLOR TO MATCH #636 STEEL BLUE DRYVIT #MICR-04-1022-ST
	F-6: IVORY SIDING - COLOR TO MATCH DRYVIT #MICR-05-1022-ST USE DRYVIT STRATOTONE HIGH PERFORMANCE COLORANT



VIEW FROM SW CORNER



WOODBLOCK ARCHITECTURE, INC.
827 SW SECOND AVENUE, SUITE 300
PORTLAND, OR 97204 | P 503.889.0504



#56467

LAND USE SUBMITTAL

MICROTEL INN AND SUITES

750 QUINCE ST
FLORENCE, OR 97439

REVISION DATES:

PROFESSIONAL SEAL

LU-6

ISSUE DATE: 11/15/2024
PROJECT NUMBER: 21-098

PERSPECTIVE



VIEW FROM NW CORNER



WOODBLOCK ARCHITECTURE, INC.
827 SW SECOND AVENUE, SUITE 300
PORTLAND, OR 97204 | P 503.889.0504



#56467

LAND USE SUBMITTAL

MICROTEL INN AND SUITES

750 QUINCE ST
FLORENCE, OR 97439

REVISION DATES:

PROFESSIONAL SEAL

LU-7

ISSUE DATE: 11/15/2024
PROJECT NUMBER: 21-098

PERSPECTIVE



VIEW FROM SE CORNER



#56467

LAND USE SUBMITTAL

MICROTEL INN AND SUITES

750 QUINCE ST
FLORENCE, OR 97439

REVISION DATES:

PROFESSIONAL SEAL

LU-8

ISSUE DATE: 11/15/2024
PROJECT NUMBER: 21-098

PERSPECTIVE



VIEW FROM NE CORNER



WOODBLOCK ARCHITECTURE, INC.
827 SW SECOND AVENUE, SUITE 300
PORTLAND, OR 97204 | P 503.889.0504



#56467

LAND USE SUBMITTAL

MICROTEL INN AND SUITES

750 QUINCE ST
FLORENCE, OR 97439

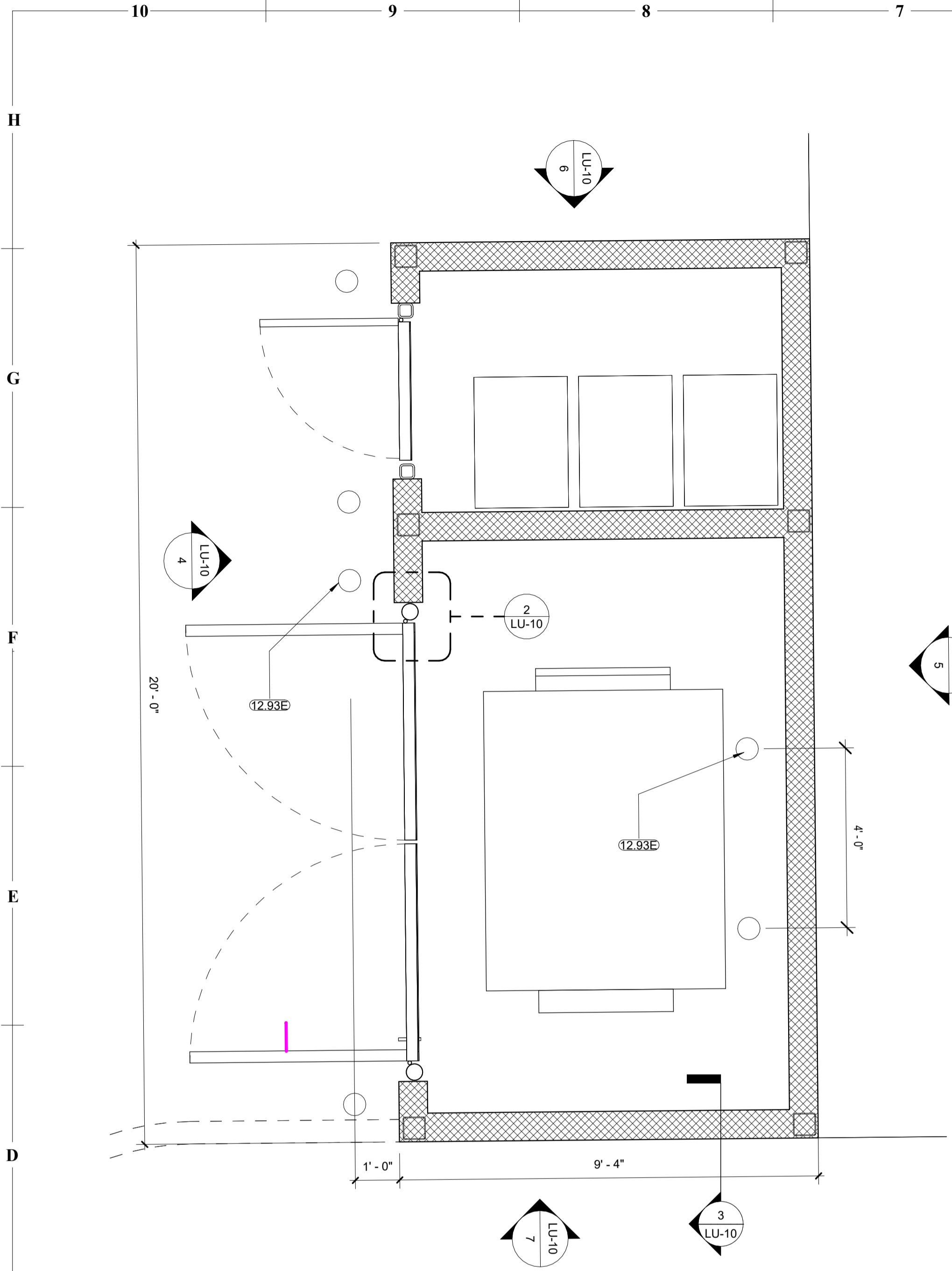
REVISION DATES:

PROFESSIONAL SEAL

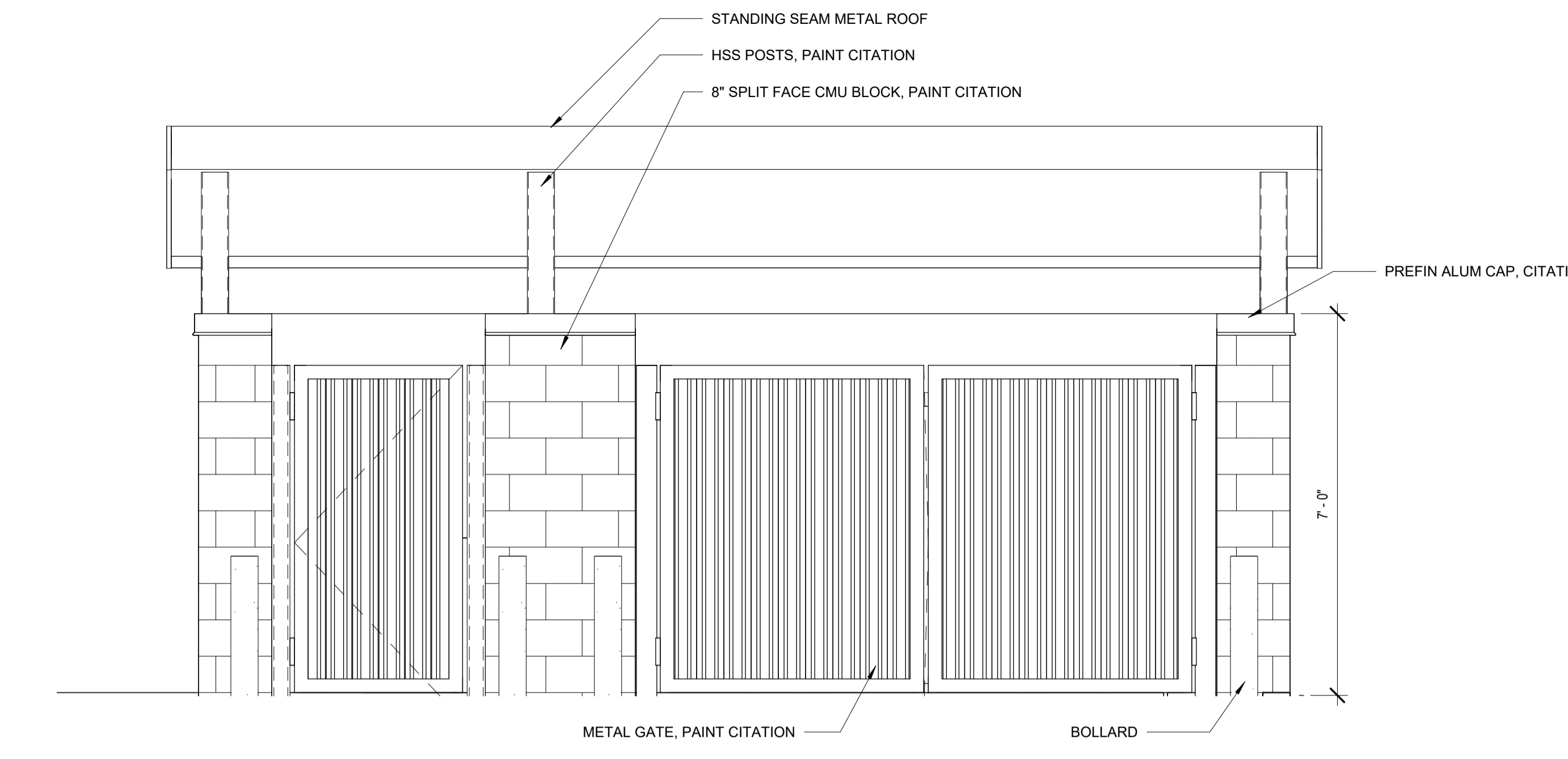
LU-9

ISSUE DATE: 11/15/2024
PROJECT NUMBER: 21-098

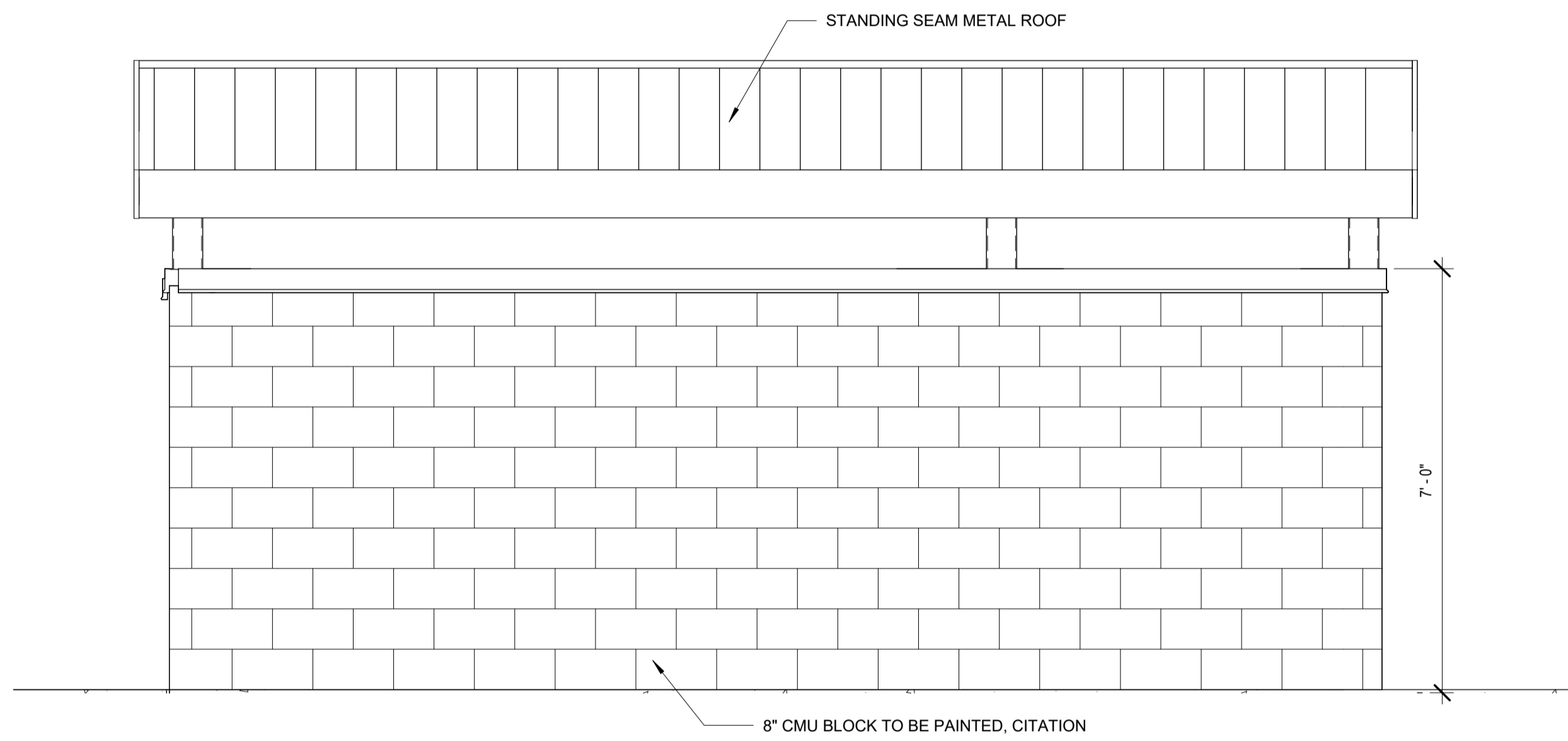
PERSPECTIVE



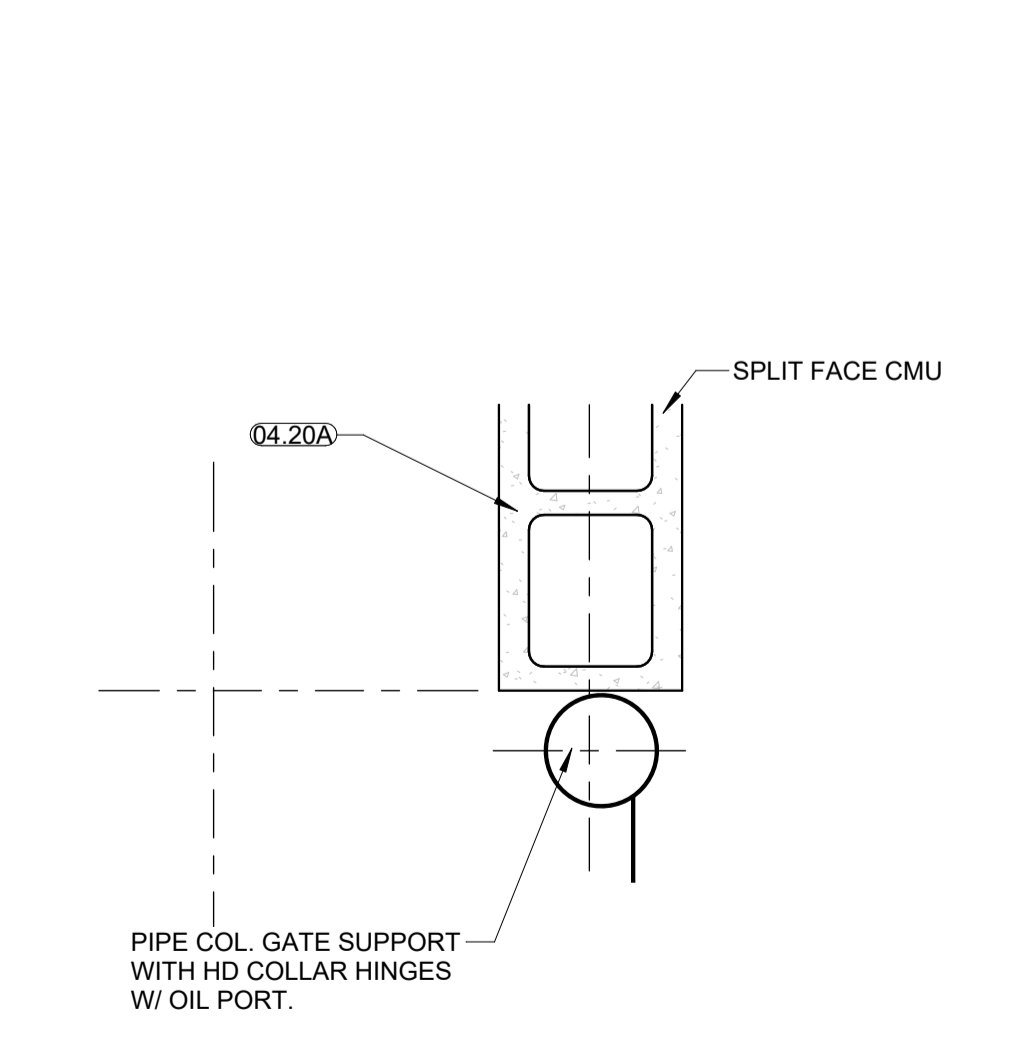
1 TRASH ENCLOSURE PLAN
SCALE | 1/2" = 1'-0"



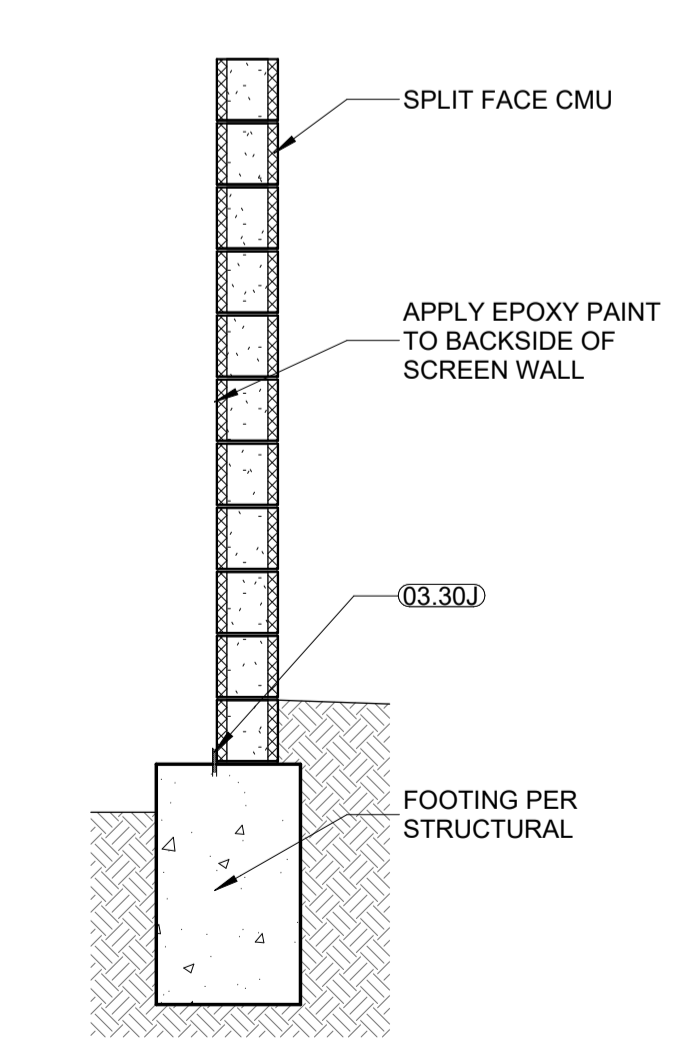
4 TRASH EAST ELEVATION
SCALE | 1/2" = 1'-0"



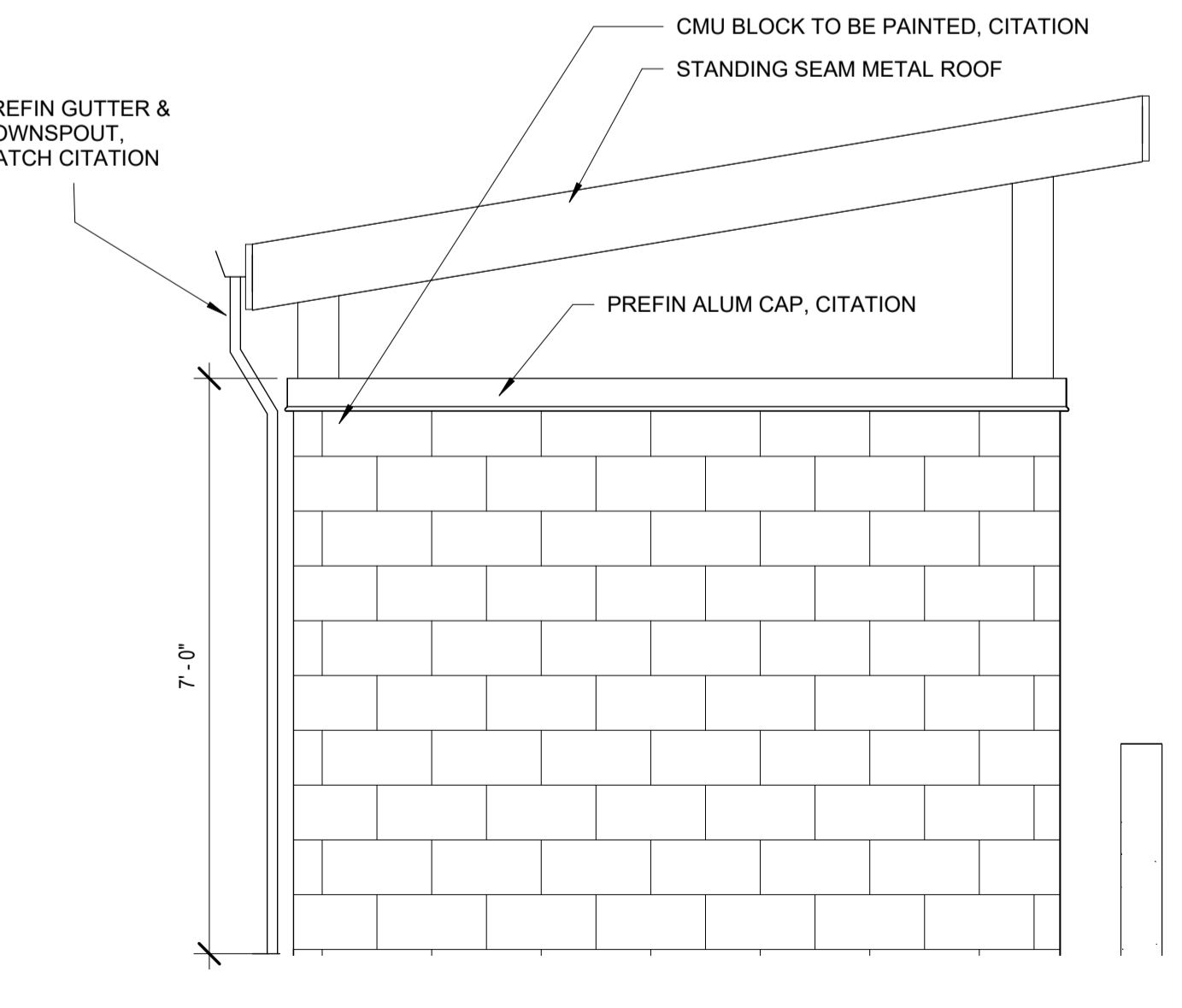
5 TRASH WEST ELEVATION
SCALE | 1/2" = 1'-0"



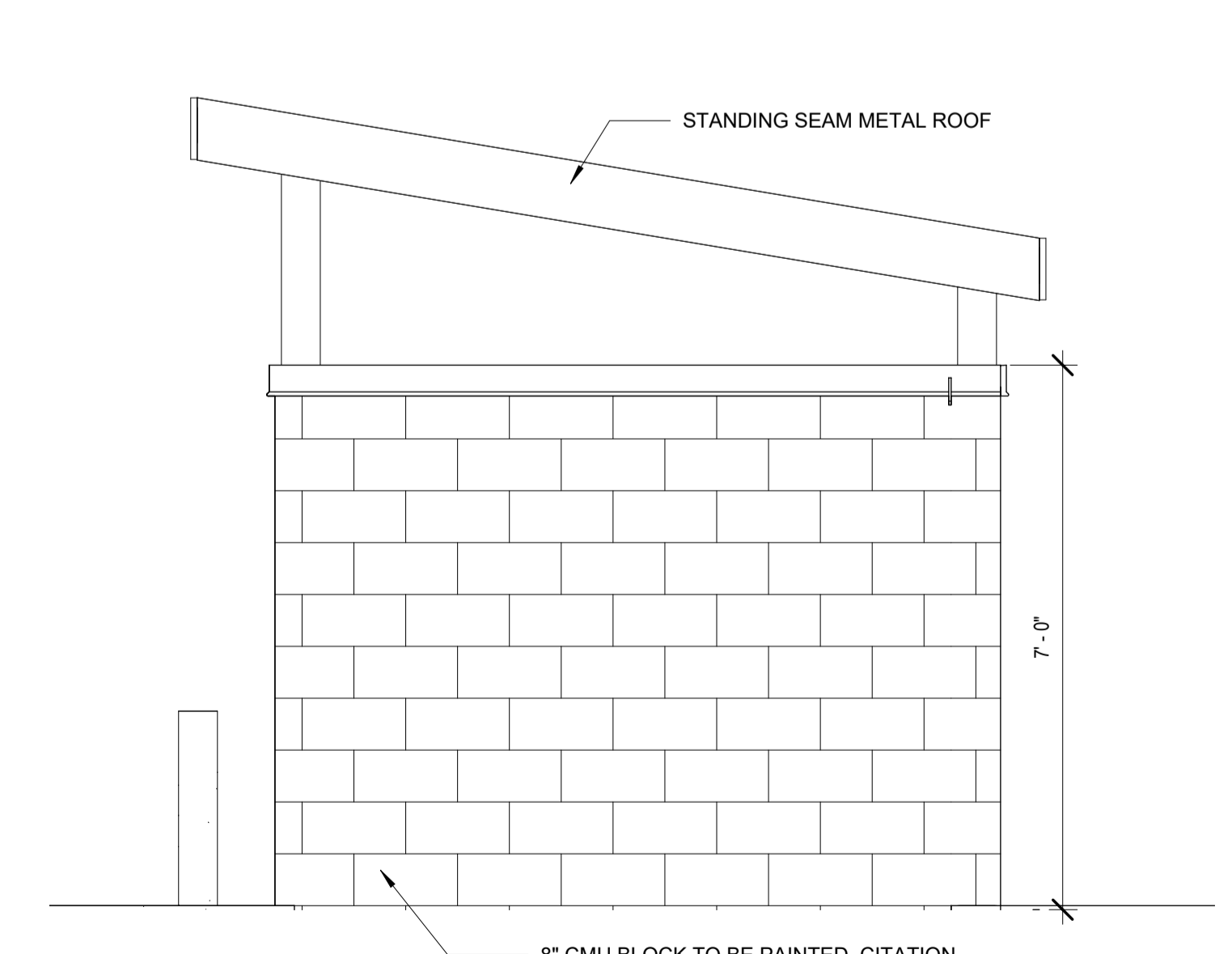
2 TRASH ENCLOSURE PLAN DETAIL
SCALE | 1 1/2" = 1'-0"



3 TRASH ENCLOSURE WALL SECTION
SCALE | 1/2" = 1'-0"



6 TRASH SOUTH ELEVATION
SCALE | 1/2" = 1'-0"



7 TRASH NORTH ELEVATION
SCALE | 1/2" = 1'-0"

REVISION DATES:
