

EXHIBIT H(2)

**Laurel Bay Gardens
88493 Highway 101
Florence, Oregon 97439
541-997-5973**

**REVISED
LANDSCAPE PLANS FOR
ELM PARK PUD**

10-21-24

CONTENTS

| <u>Sheet</u> | |
|---------------------------------------|--|
| 1 | Tree-Plant List and Specifications |
| <u>Elm Park Apartments</u> | |
| 2 | Irrigation North |
| 3 | Irrigation South |
| 4 | Irrigation Parking Islands |
| 5 | Tree and Plants North |
| 6 | Tree and Plants South |
| 7 | Trees and Plants Parking Lot Islands |
| 8 | Trees and Plants Stormwater Facilities (Rev) |
| <u>Elm Park Early Learning Center</u> | |
| 9 | Irrigation Plan |
| 10 | Tree and Plants |
| 11 | Trees and Plants Stormwater Facilities (Rev) |

Laurel Bay Gardens LCB# 100345 9/20/24

Rain Garden Plant list

| | | |
|------------------------|-----|----|
| Alnus Rubra Red Alder | 15G | AL |
| Midwinter fire Dogwood | 1G | MD |
| Carex Obnupta | 4" | CO |
| Juncus Patens | 4" | JU |
| Salix Candida | 5G | SA |

Specifications

Bottom of rain garden 18" open rock wrapped in filter fabric

18" growing medium

3 to 1 slope

2" rock mulch applied to bottom planting area

3" rip rap rock applied at Inlet and Outlet areas

All plantings put on a drip irrigation system

All rain Gardens soaker trenches will have a soil/compost mix rototilled into the lower planting area to ensure survival of plants. .

Types of Rain Gardens

Filtration Rain Gardens

Infiltration Rain Gardens

Onfiltration Soaker Trench

Landscape Plant List

Trees

| | | |
|---------------------------------------|-----|------|
| Existing tree/Autumn Blaze Maple * | 15G | EXAG |
| Existing tree/Weeping Alaskan Cedar * | 15G | EXWA |
| Autumn Blaze Maple | 15G | AM |
| Weeping Alaskan Cedar | 15G | WA |

Shrubs

| | | |
|------------------------------|----|----|
| Vine Maple | 7G | VM |
| Sumak Fineline | 3G | S |
| Rhododendron | 5G | RH |
| Euonymus Burning Bush | 3G | BB |
| Nandina Moyers Red | 5G | NA |
| Pieris Mountain Fire | 3G | PI |
| Pieris Cavatine | 3G | PC |
| Goldflame Spirea | 3G | GD |
| Hydrangea Nico Blue | 3G | HY |
| Hydrangea Paniculata Variety | 3G | HP |

1 and 2 Gallon plants

| | |
|-------------------------|-------|
| Girard's Crimson Azalea | 2G AZ |
| Rosy Glow Barberry | 2G RB |
| David Viburnum | 2G DV |
| Winter Heather Furzy | 1G WH |
| Summer Heather FireFly | 1G SH |
| Miscanthus Adagio | 1G M |
| Rudbeckia Goldstream | 1G RU |
| Shasta Daisy | 1G SD |
| Crocsmia Lucifer | 1G CR |
| Lavender Spanish | 1G LV |

Groundcover 4" plants

| | |
|-----------------------------|-------|
| Kinnikinnick Point Reyes | 4" KR |
| Kinnikinnick Vancouver Jade | 4" K |

Specifications

All trees over 6' will be staked

All plants will be installed with a topsoil/compost blend using the pocket planting method

Lawn will be a Perennial Rye Blend

All plants will be irrigated with a automatic drip system and the lawn will be rotor/overhead water. The irrigation system will be installed with a backflow prevention assembly and a Irrigation Permit will be obtained prior to installation. An irrigation plan will be provided to the City Of Florence.

The Landscape and Irrigation system will be maintained and warrantied for 6 months by the landscape contractor. Dead and diseased plants will be replaced by the landscape contractor during the 6 month warranty period. This does not cover vandalism or weather damage.

Existing Trees Scheduled to remain. If removal is necessary I have provided alternate trees listed above to be planted. (EXAG,EXWA)

In all landscape beds and open areas there will be approximately 175 yards of medium fir bark mulch 3" deep.

Irrigation Plan Apartment Building

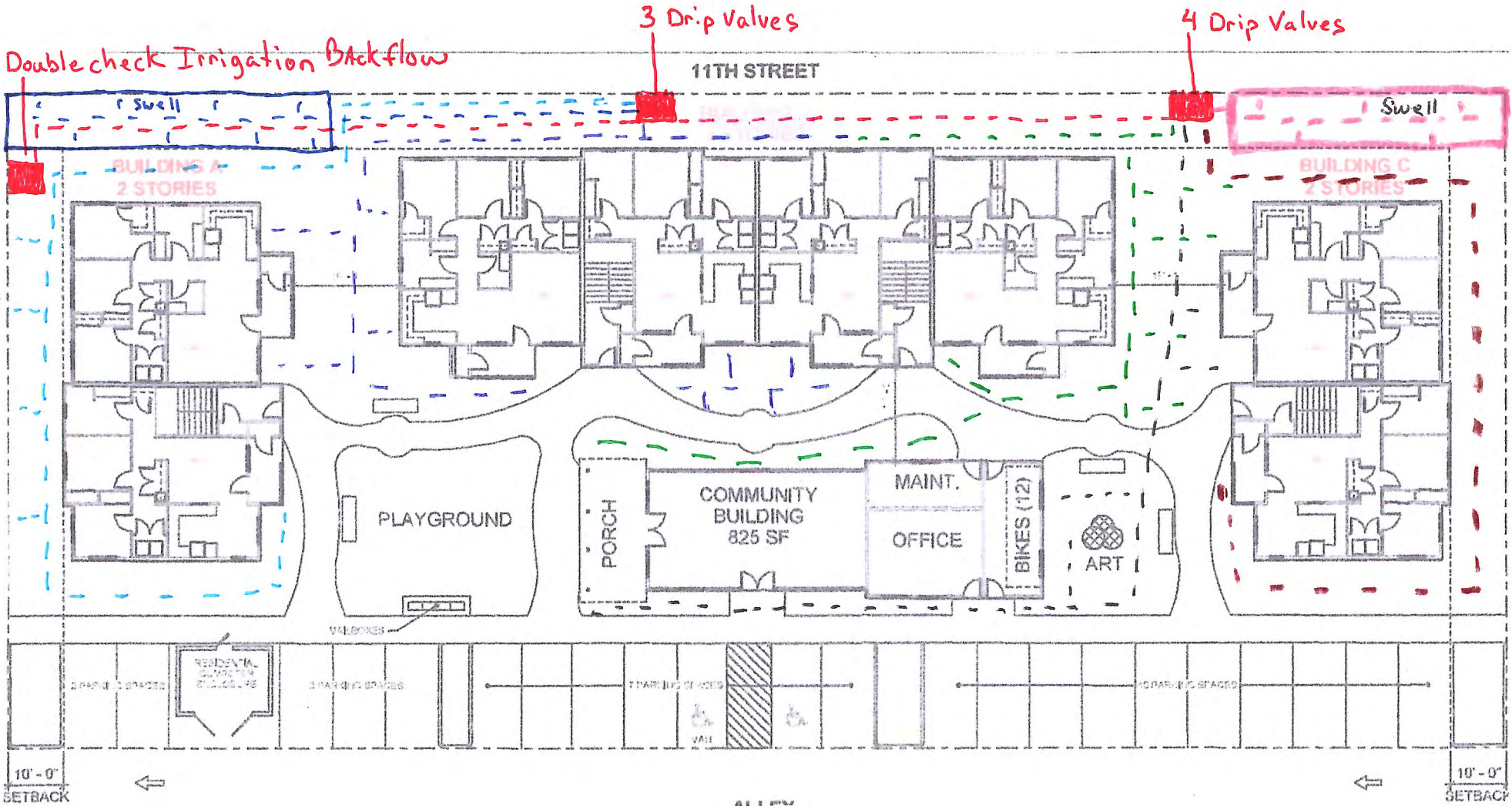
8-8-24

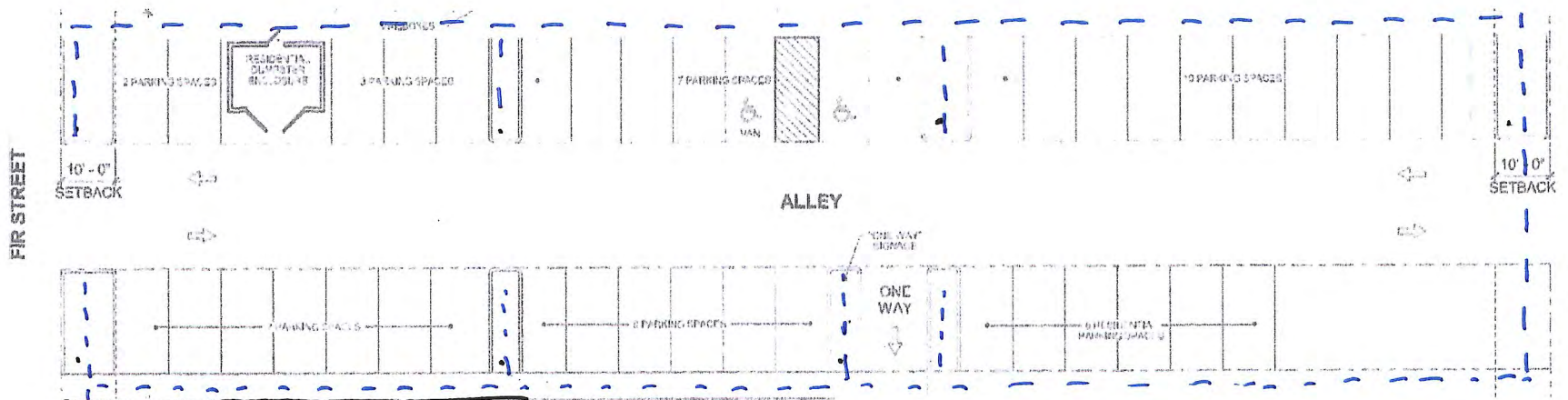
Laurel Bay Gardens

- mainline
- Zone 1
- Zone 2
- Zone 3
- Zone 4

- Zone 5
- Zone 6
- Zone 7

1 Double check Irrigation Backflow





1 Drip Valve
Irrigation Double check
Backflow @ Lower left
Apartment building

--- Zone 1 Parking lot islands

Parking lot Island bed
Irrigation Plan

8-8-24

Laurel Bay Gardens

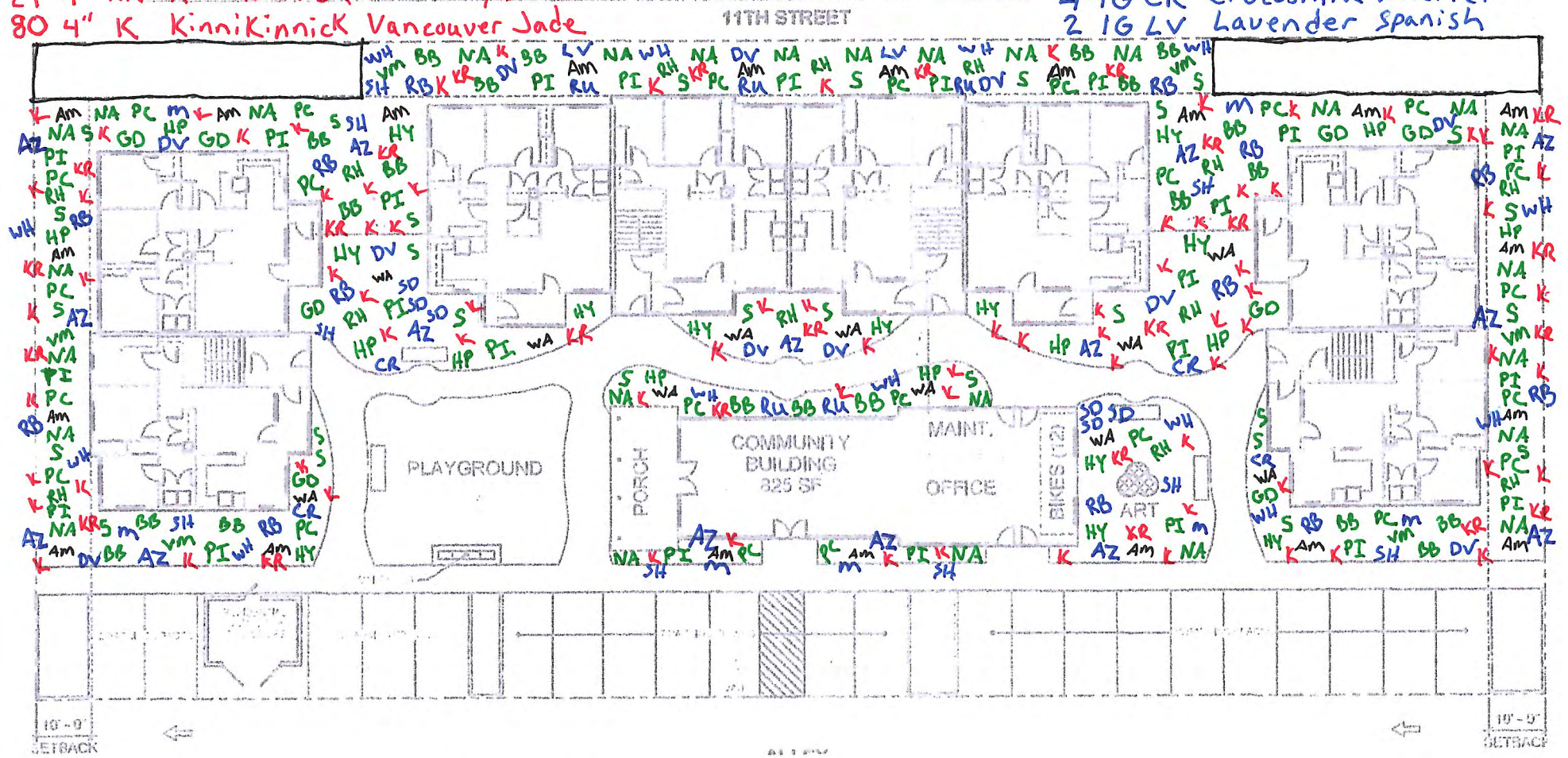
- Tree list
 21 15G Am Autumn Blaze Maple
 11 15G WA Weeping Alaska cedar

- Shrub list
 12 3G HY Hydrangea Nico Blue
 10 3G HP Hydrangea Paniculata

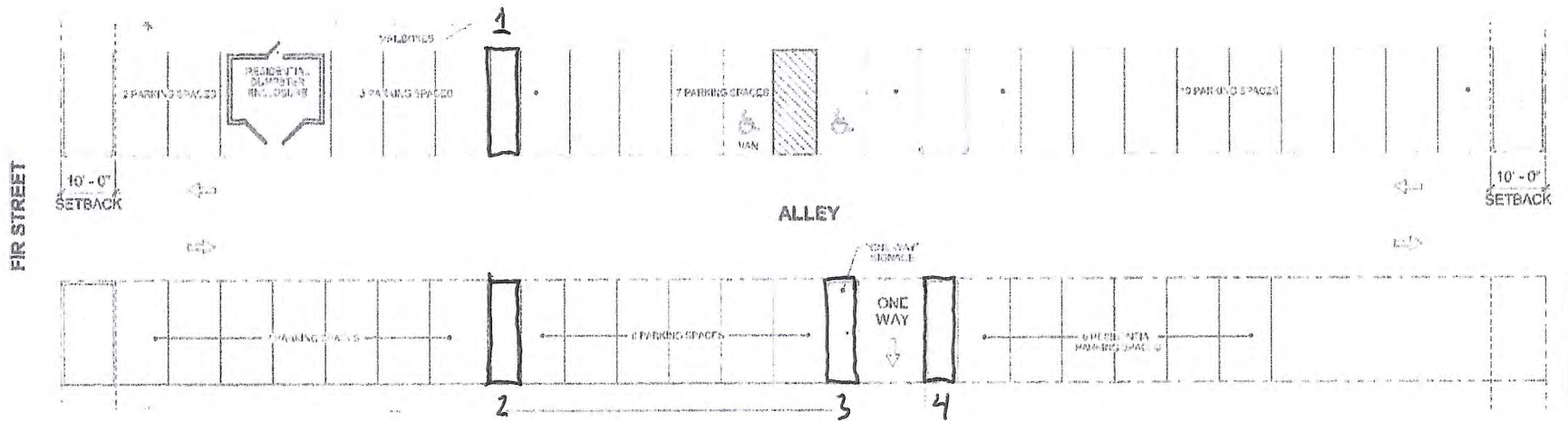
- Ground cover 4" plants
 24 4" KR Kinnikinnick Point Reyes
 80 4" K Kinnikinnick Vancouver Jade

- Shrub list
 6 7G vm vine maple
 28 3G S Sumak Fineline
 12 5G RH Rhododendron
 21 3G BB Euonymus Burning Bush
 27 5G NA Nandina Moyers Red
 24 3G PI Pieris Mountain Fire
 24 3G PC Pieris Cavatine
 8 3G GD GoldFlame Spirea

- 1-2gal plants
 15 2G AZ Girard's Crimson Azalea
 13 2G RB Rosy Glow Barberry
 11 2G DV David V. burnum
 13 1G WH Winter Heather Furzy
 9 1G SH Summer Heather Firefly
 7 1G M Miscanthus Adagio
 5 1G RU Rudbeckia Goldstream
 6 1G SD Shasta Daisy
 4 1G CR Crocosmia Lucifer
 2 1G LV Lavender Spanish



Apartment Building Landscape Plan
 Laurel Bay Gardens
 9-20-24 LCB# 100345



4 Parking Lot Islands

Each Island will get

- 1 15G AM Autumn Blaze Maple
- 3 5G SA Salix
- 2 1G MD Midwinter Fire Dogwoods

Laurel Bay Gardens
 LCB # 100345
 9-20-24

Filtration Rain Garden

3 at 200 square feet each
each one will get

2-15G AL Red Alder

1-5G SA Salix

4-1G MD Dogwood

78-4" JU Juncus

77-4" CO Carex

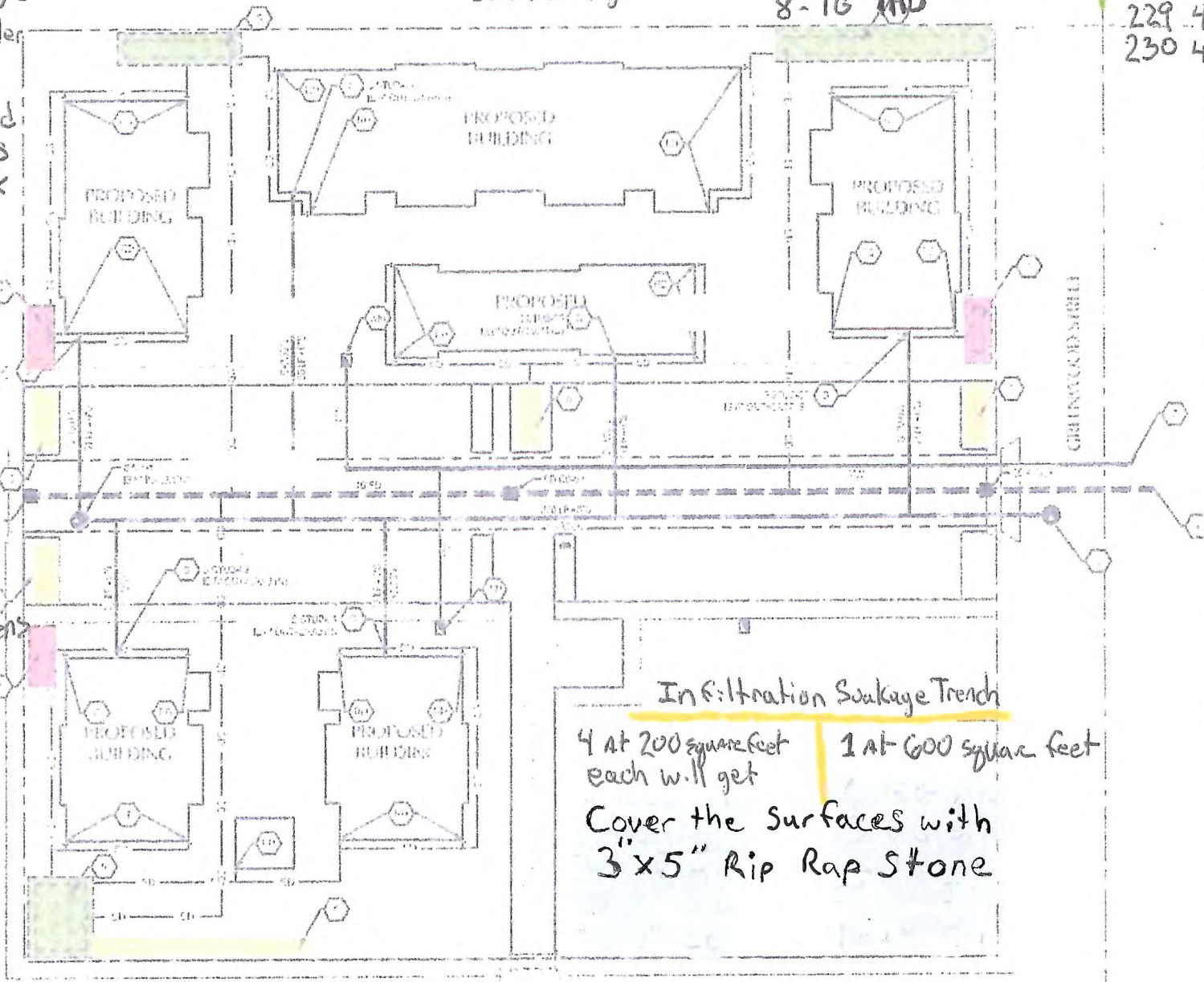
11TH STREET Infiltration Rain Garden

2 at 400 square feet
each will get

4-15G AL
2-5G SA
8-1G MD

1 At 600 square feet

6 15G AL
3 5G SA
12 1G MD
229 4" JU
230 4" CO



Laurel Bay Gardens

LCB # 100345

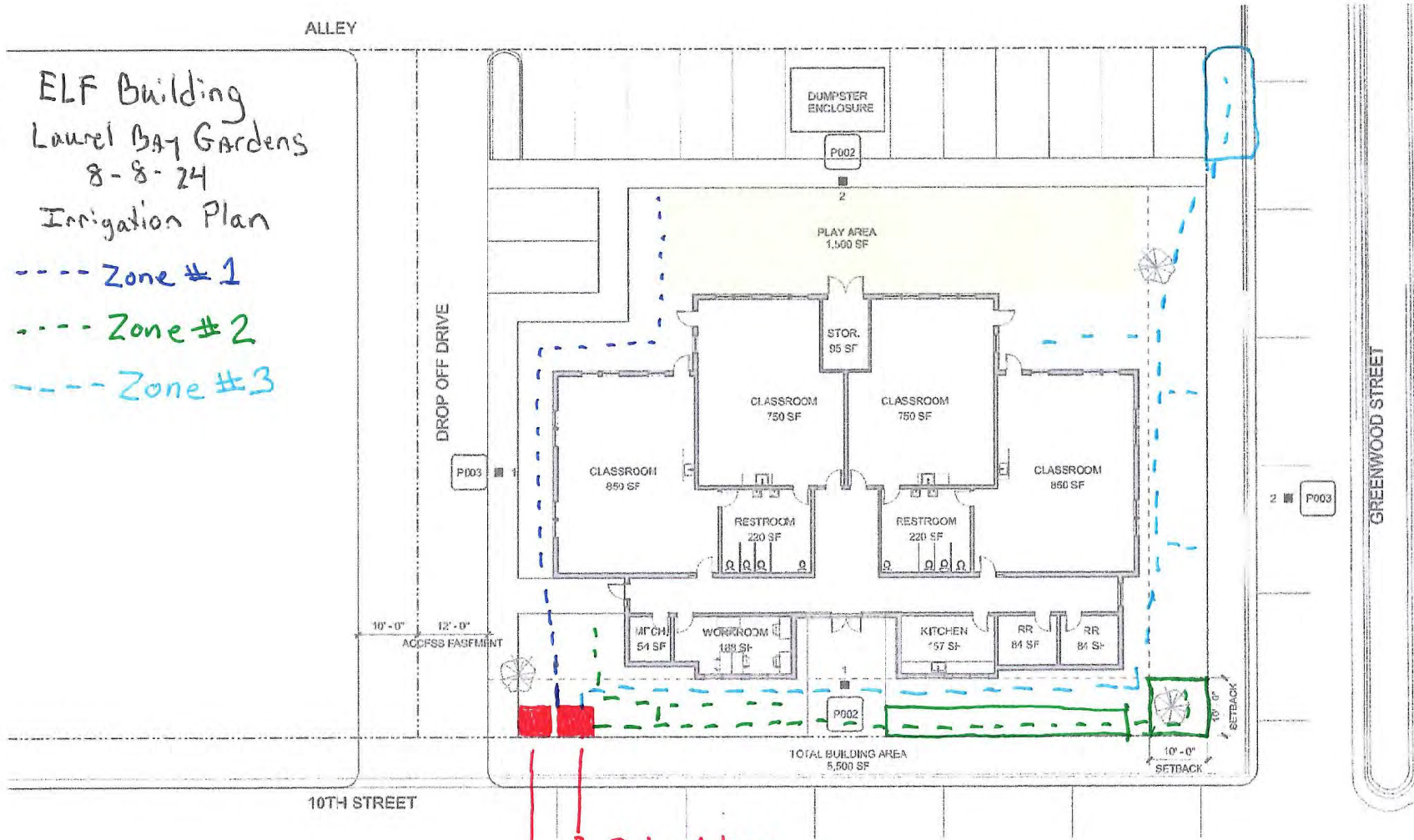
9-20-24

Infiltration Soakage Trench
4 at 200 square feet each will get | 1 at 600 square feet
Cover the surfaces with 3" x 5" Rip Rap Stone

© 2024 PIVOT ARCHITECTURE

ELF Building
Laurel Bay Gardens
8-8-24
Irrigation Plan

- Zone #1
- Zone #2
- Zone #3



3 Drip Values
1 Backflow Irrigation Double check Valve

SITE PLAN
Elm Park Early Learning

SHT #: P001
07/12/24

PIVOT
ARCHITECTURE

Tree list

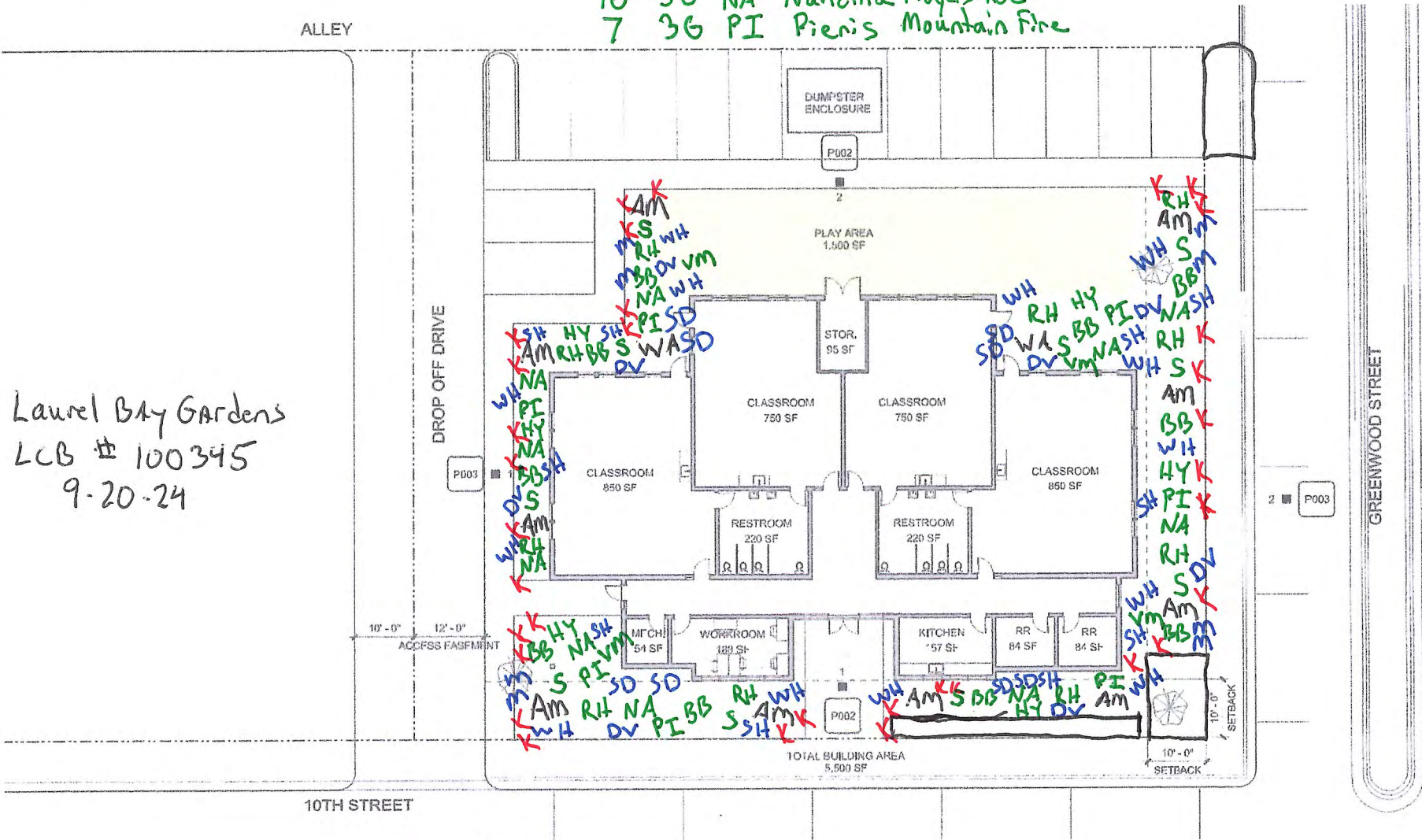
- 10 15G AM Autumn Blaze Maple
- 2 15G WA Weeping Alaska Cedar

Shrub list

- 10 3G S Sumak Fineline
- 10 5G RH Rhododendron
- 10 3G BB Euonymus Burning Bush
- 10 5G NA Nandina Moyers Red
- 7 3G PI Pieris Mountain Fire

- 6 3G HY Hydrangea Nlco Blue
- 4 7G VM Vine Maple

© 2024 PIVOT ARCHITECTURE



Laurel Bay Gardens
LCB # 100345
9-20-24

1-2 gallon Plants

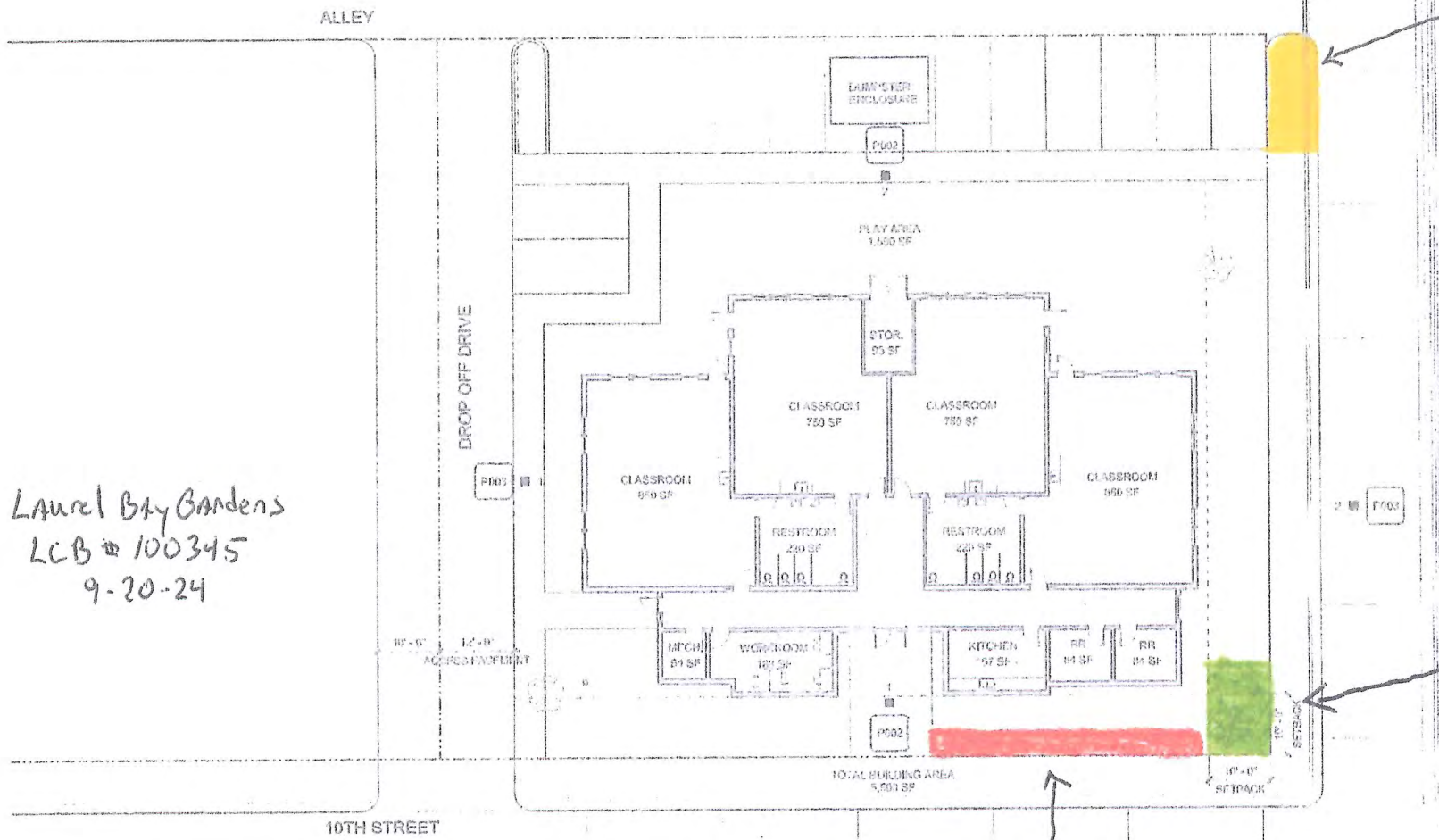
- 13 1G WH Winter Heather Furzy
- 8 2G DV David Viburnum
- 10 1G SH Summer Heather Fire Fly
- 8 1G SD Shasta Daisy
- 8 1G M Miscanthus Adagio

Ground Cover 4" Plants
33 4" K Kinnikinnick

SITE PLAN
Elm Park Early Learning

SHT #: P001
07/12/24

PIVOT



Infiltration Souker trench
 1 At 200 sq/ft
 Cover Surface with 3'x5" Rip Rap Stone.

Infiltration Rain Garden
 1 At 400 sq/ft
 4 15G AL
 2 5G SA
 8 1G MD
 156 4" JU
 154 4" CO

Filtration Rain Garden
 1 At 400 sq/ft
 4 15G AL
 2 5G SA
 8 1G MD
 156 4" JU
 154 4" CO

SITE PLAN
 Elm Park Early Learning

SHT #: P001
 07/12/24

P.VOT