

LUMINAIRE SCHEDULE

- NOTES:
1. ALL FIXTURES SHALL BE U.L. OR SIMILARLY LISTED.
 2. INCLUDE A MINIMUM 1 YEAR WARRANTY FOR LIGHTING FIXTURES, WHERE NOT OTHERWISE SPECIFIED.
 3. REFER TO ARCHITECTURAL DOCUMENTS FOR EXACT MOUNTING LOCATIONS, DETAILS, AND CONFIGURATIONS OF ALL LUMINAIRES. IF ARCHITECTURAL DRAWINGS DO NOT CLARIFY EXACT MOUNTING LOCATION OR DETAIL, ISSUE AN RFI FOR ARCHITECT TO SPECIFICALLY CLARIFY PRIOR TO FIXTURE ROUGH-IN.
 4. VERIFY COMPATIBILITY OF LIGHT FIXTURES WITH CEILING MATERIAL, ADJACENT CONSTRUCTION, AND ADJACENT FINISHES PRIOR TO SHOP DRAWINGS SUBMITTAL. NOTIFY THE ARCHITECT OF ANY CONFLICTS WITH THE PROPOSED INSTALLATION.
 5. CONTRACTOR IS RESPONSIBLE FOR ALL MISCELLANEOUS HARDWARE NECESSARY TO INSTALL AND SUPPORT THE LUMINAIRES.
 6. AIM AND TARGET ADJUSTABLE INTERIOR AND EXTERIOR LIGHT FIXTURES UNDER THE OBSERVATION AND IN COMPLIANCE WITH RECOMMENDATIONS OF THE ARCHITECT. INCLUDE LABOR AND MATERIAL COSTS MADE NECESSARY BY THIS REQUIREMENT.
 7. CONTRACTOR IS RESPONSIBLE FOR OBTAINING AND FILLING OUT ALL UTILITY REBATE FORMS FOR OWNER.

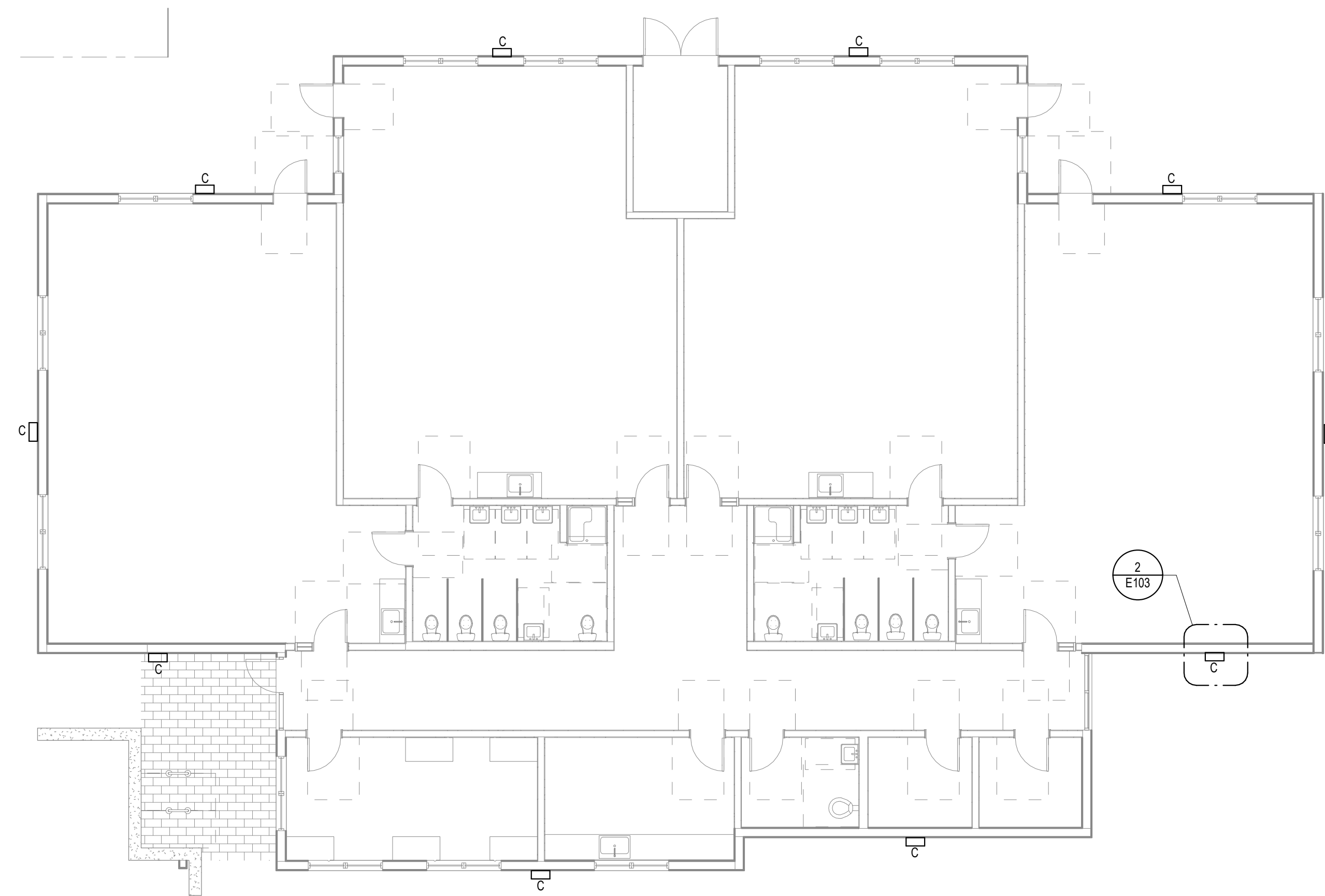
TYPE	DESCRIPTION	MANUFACTURER	MODEL	FINISH	LUMENS	CRI	DRIVER TYPE	SOURCE-CCT	VOLTAGE	INPUT WATTAGE	LUMINAIRE HEIGHT A.F.F.
C	WALL MOUNTED LIGHT	LITHONIA LIGHTING	WDGE1 LED P2 40K 80CRI VW MVOLT SRM PE DBLXD - TYPE 2	BLACK	1980	80	INCLUDED	LED-4000K	120 V	15 W	12 FEET

DESIGNED BY: JDH

LIGHTING SYMBOLS	
	SURFACE WALL MOUNTED FIXTURE

ID No. 76

KCL
ENGINEERING
309 W 4th Ave, Ste 201
Eugene, OR
97401
503-212-4612



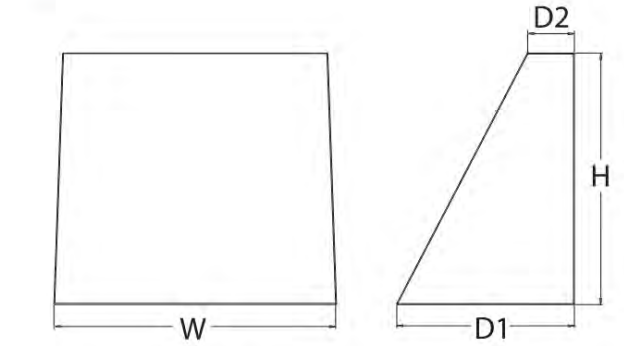
LUMINAIRE TYPE C



WDGE1 LED
Architectural Wall Sconce

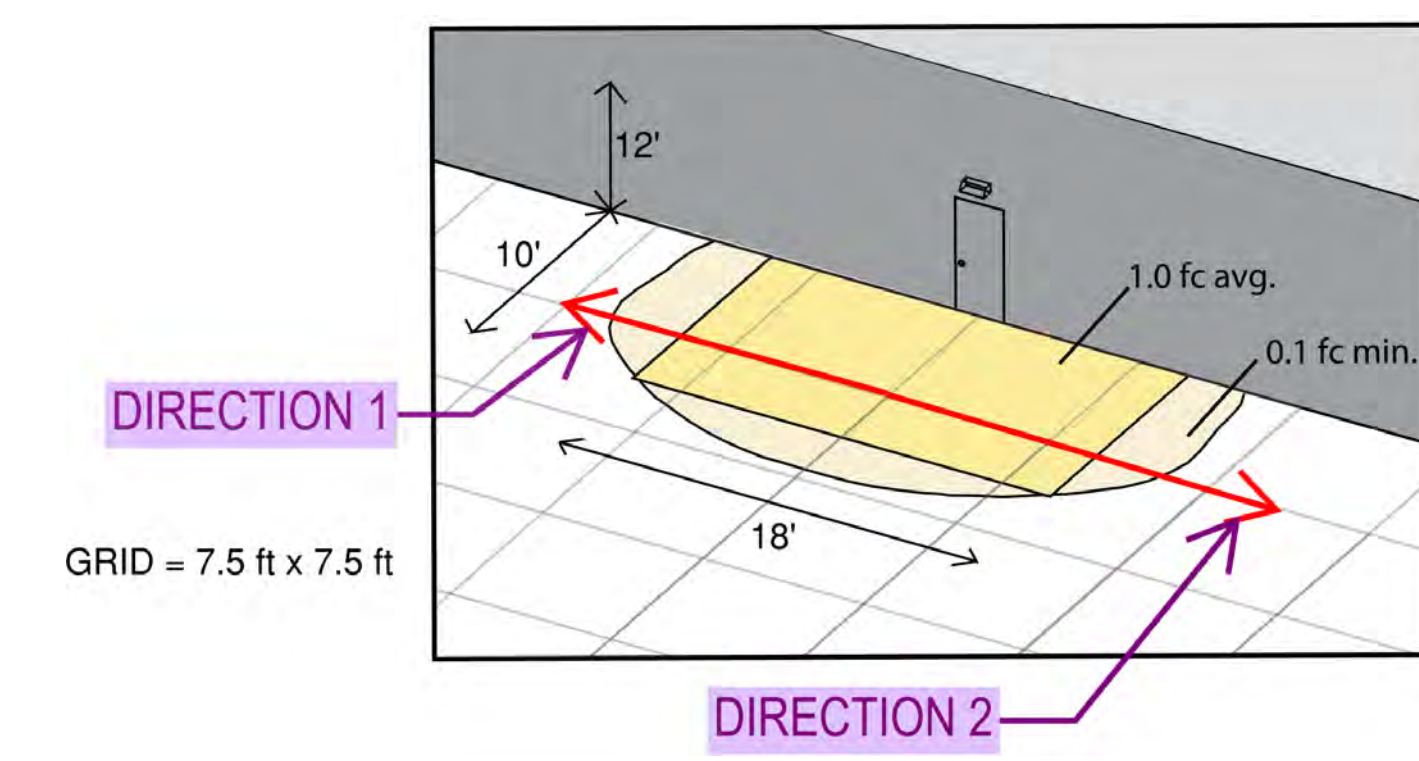


- Specifications**
- Depth (D1): 5.5"
 - Depth (D2): 1.5"
 - Height: 8"
 - Width: 9"
 - Weight: 9 lbs (without options)



DETAIL NOTE:

- 1- THE LUMINAIRE'S LIGHTING DISTRIBUTION IS TYPE 2, MEANING THE LIGHT IS DISPERSED IN TWO DIRECTIONS, AS SHOWN IN DETAIL SEE DIRECTION 1 AND DIRECTION 2.
- 2- THE LUMINAIRE IS MOUNTED ON THE BUILDING OUTSIDE WALL.



1 ELF BUILDING EXTERIOR LIGHTING FLOOR PLAN
1/8" = 1'-0"

2 WALL PACK MOUNTING DETAIL
NOT TO SCALE

OUR COASTAL VILLAGE FLORENCE

628 RADAR RD, YACHTS, OR 97498

Project No: 24218

Date: 10/31/24

FOR PUD REVIEW

Revision	Date

Drawing Name:
ELF BUILDING EXTERIOR LIGHTING FLOOR PLAN

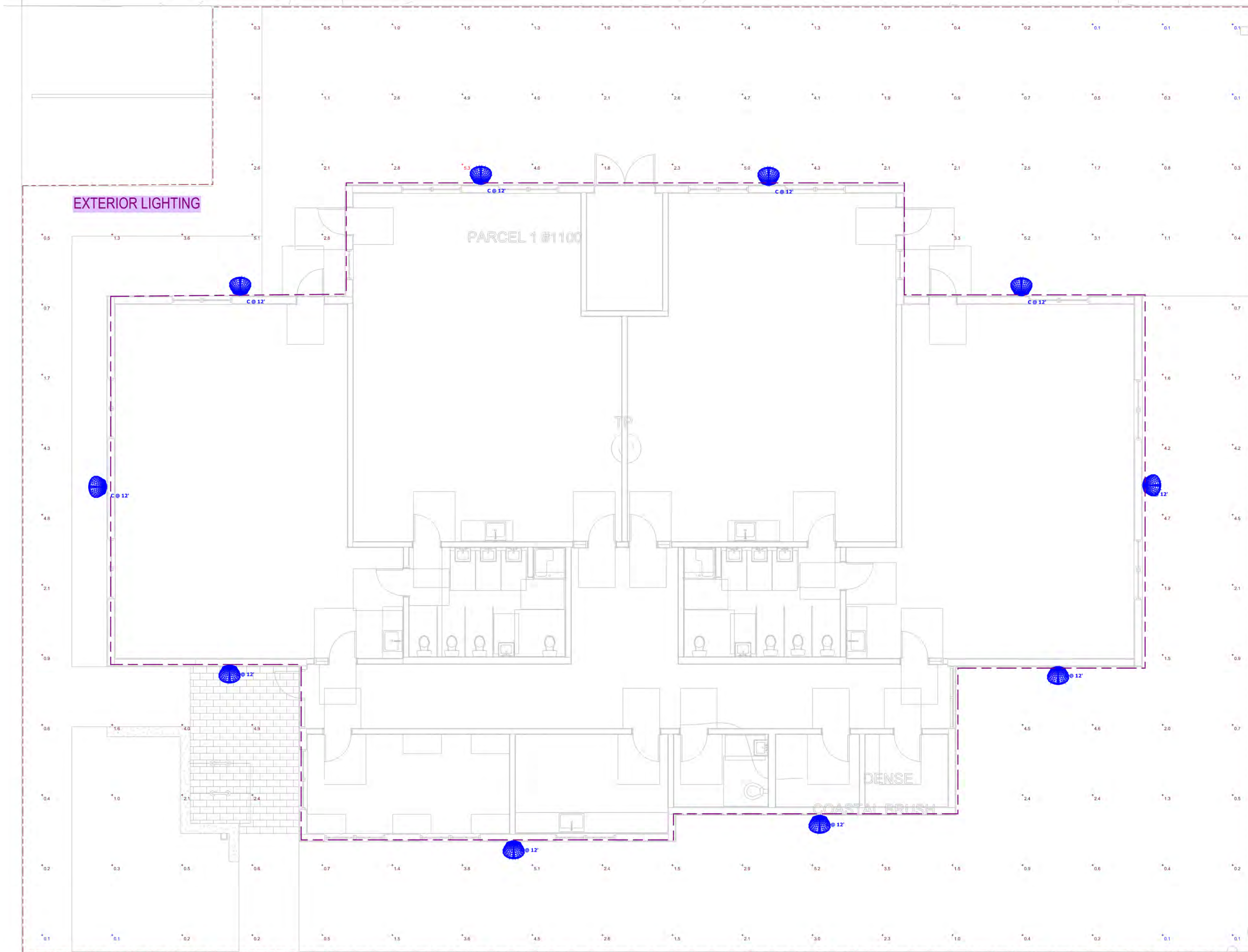
Drawing #:

E103

EASEMENT
 13'X19'
 PARCEL 2
 #1100

PARCEL #1200

Statistics						
Description	Symbol	Avg	Max	Min	Max/Min	Avg/Min
EXTERIOR LIGHTING	+	1.9 fc	5.3 fc	0.1 fc	53.0:1	19.0:1



OUR COASTAL VILLAGE FLORENCE

628 RADAR RD, YACHTS, OR 97498

Project No: 24218
 Date: 10/31/24
 FOR PUD REVIEW

Revision	Date

Drawing Name:
 ELF BUILDING - LIGHTING
 CALCULATIONS

Drawing #:
E104